



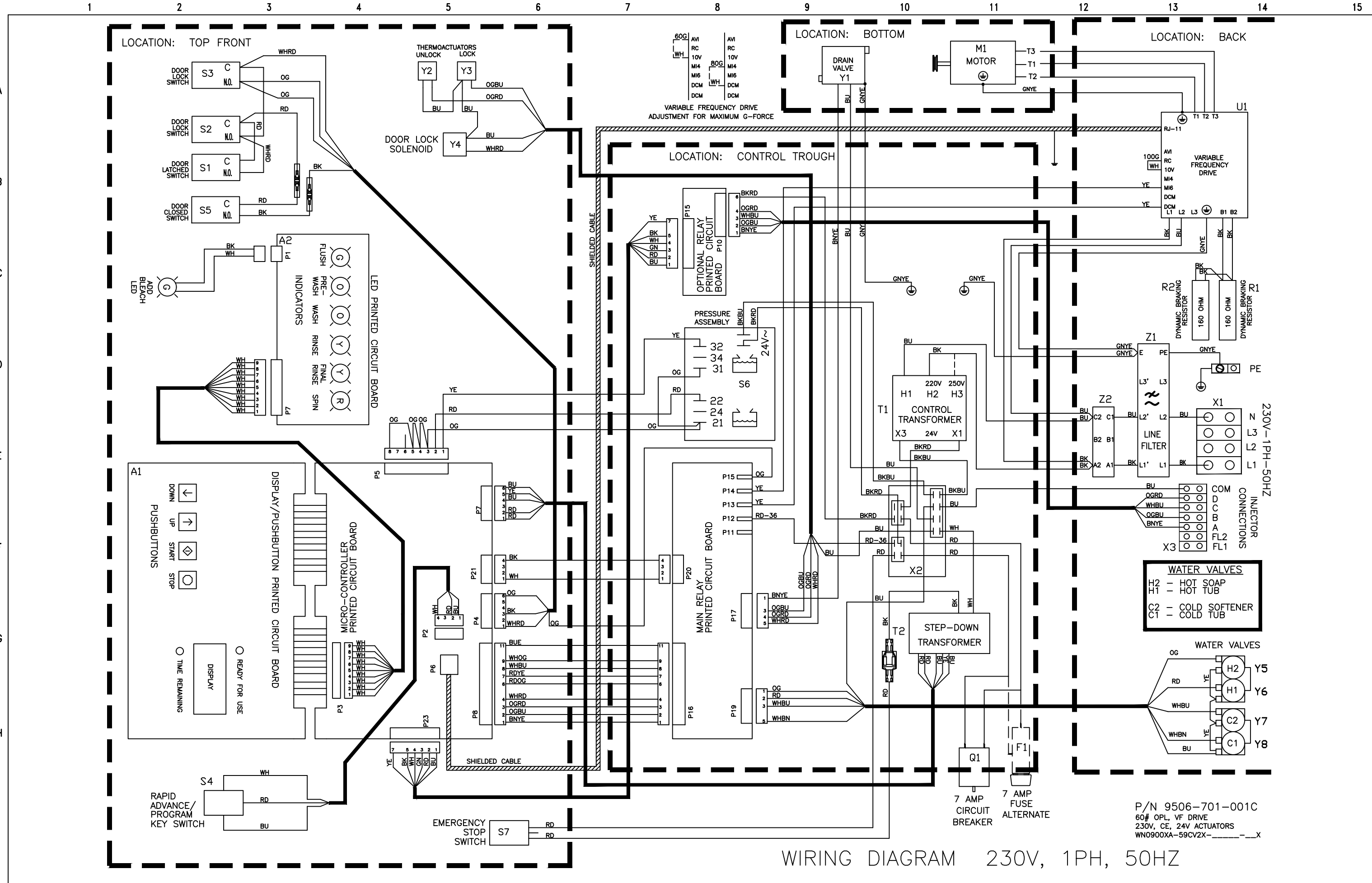


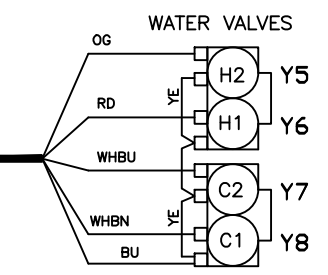
H2 - 
H1 - 
C2 - 
C1 - 

SCHMATIC 230V, 1PH, 50HZ

P/N 9506-701-001C
60 LB OPL, VF DRIVE
230V, CE, 24V ACTUATORS
WN0900XA-59CV2X-___X



WATER VALVES
 H2 - HOT SOAP
 H1 - HOT TUB
 C2 - COLD SOFTENER
 C1 - COLD TUB



P/N 9506-701-001C
 60# OPL, VF DRIVE
 230V, CE, 24V ACTUATORS
 WN0900XA-59CV2X-_-_-X

WIRING DIAGRAM 230V, 1PH, 50HZ