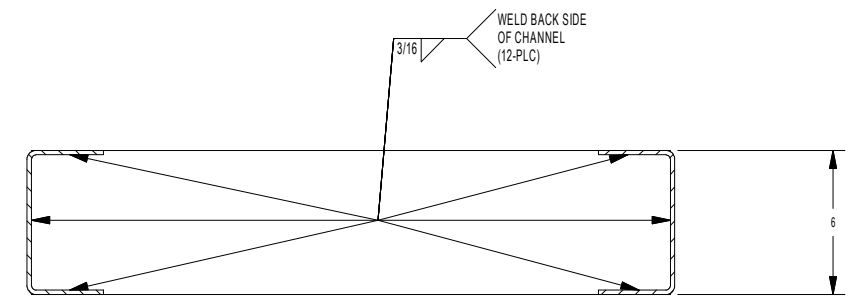
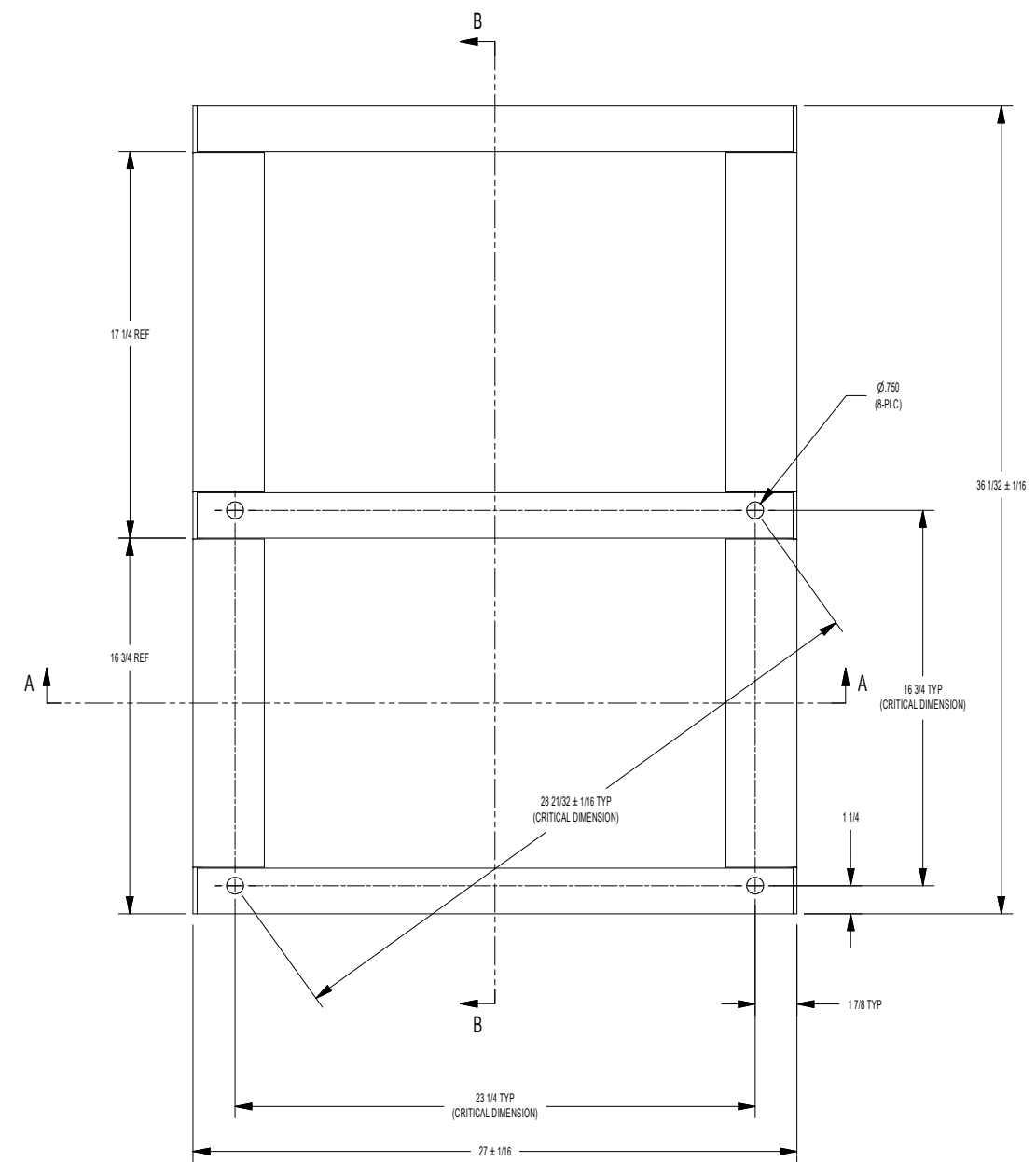
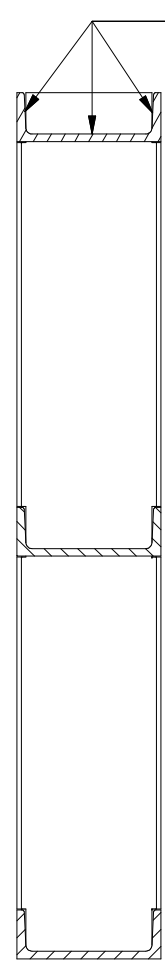


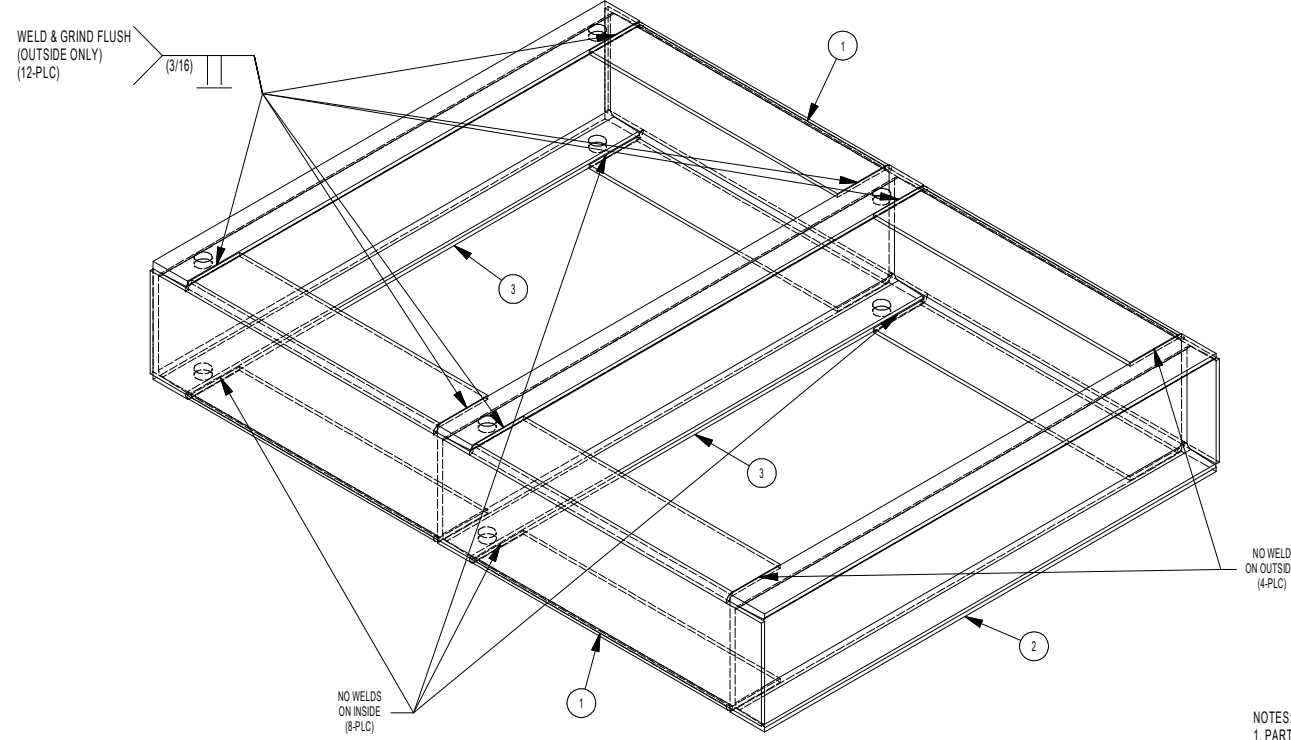
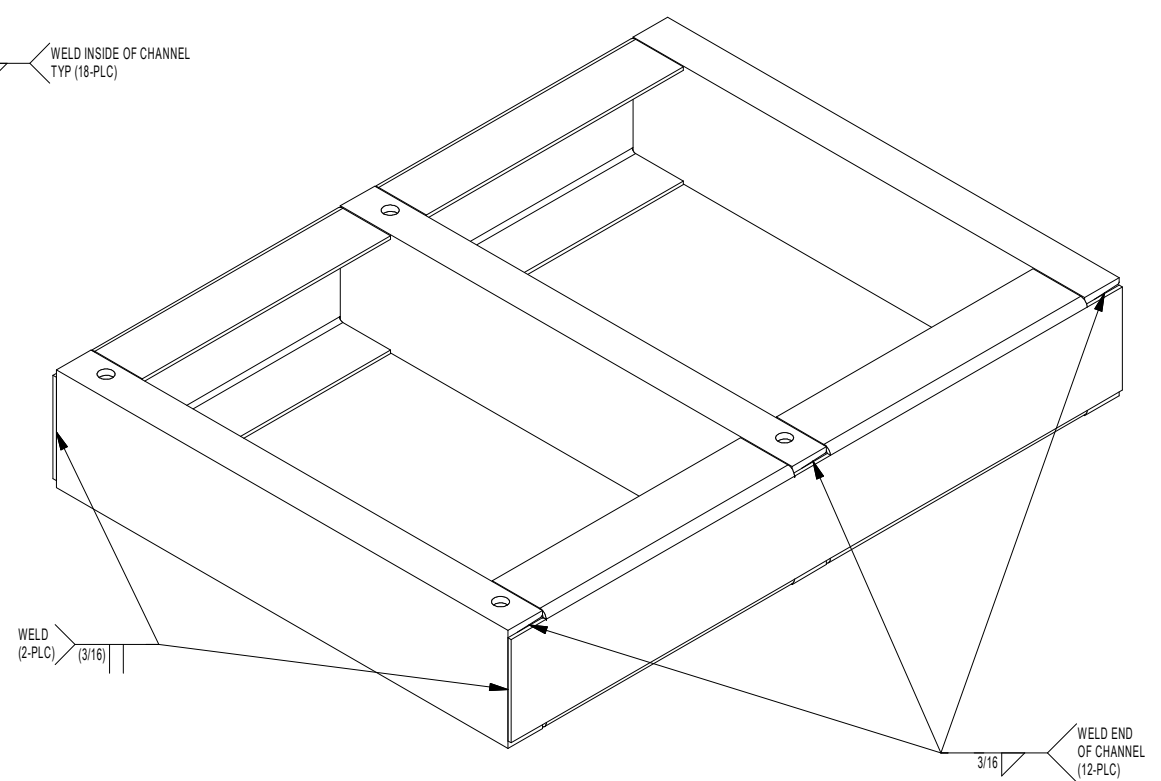
REVISION HISTORY		APP
REV	DESCRIPTION	
PR	RELEASE FOR PARTS AND SERVICE - 001	JP
	ECH-00374	3/8/17



SECTION A-A  
SCALE 1/4



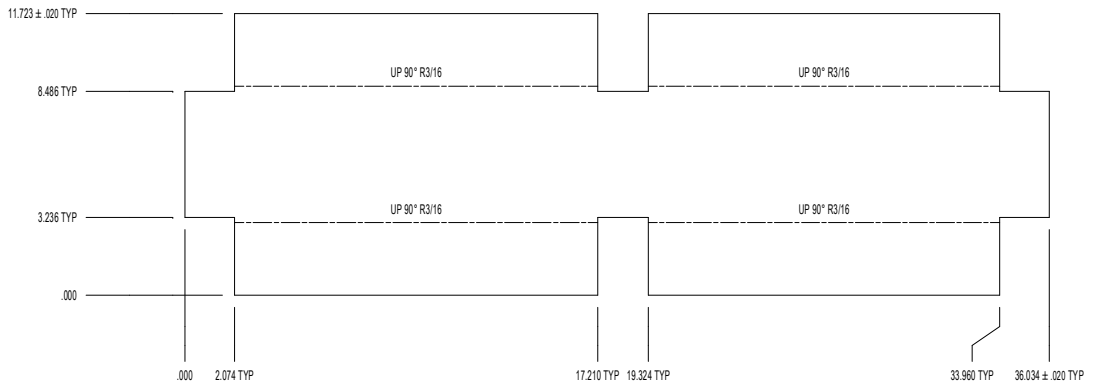
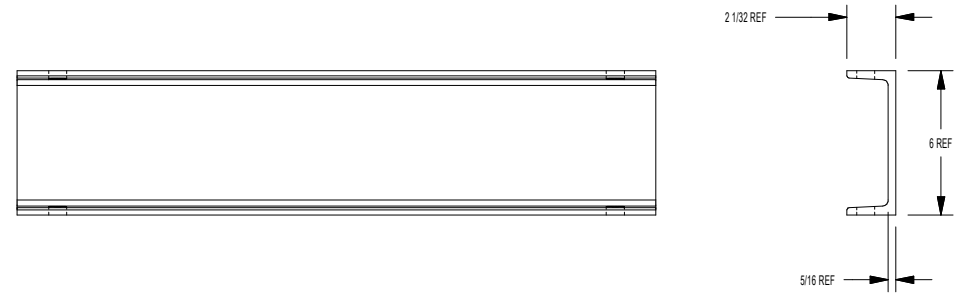
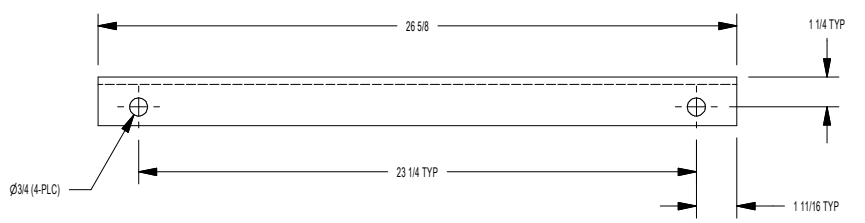
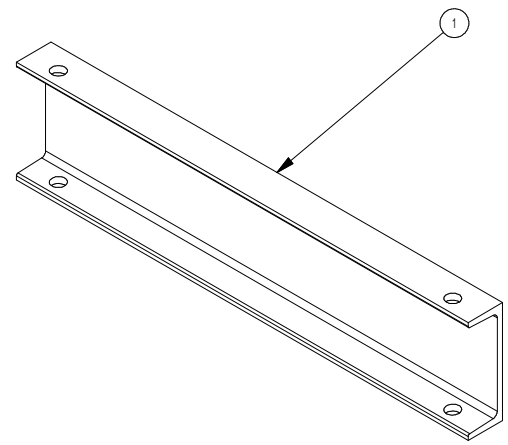
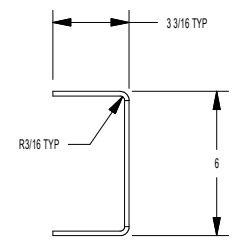
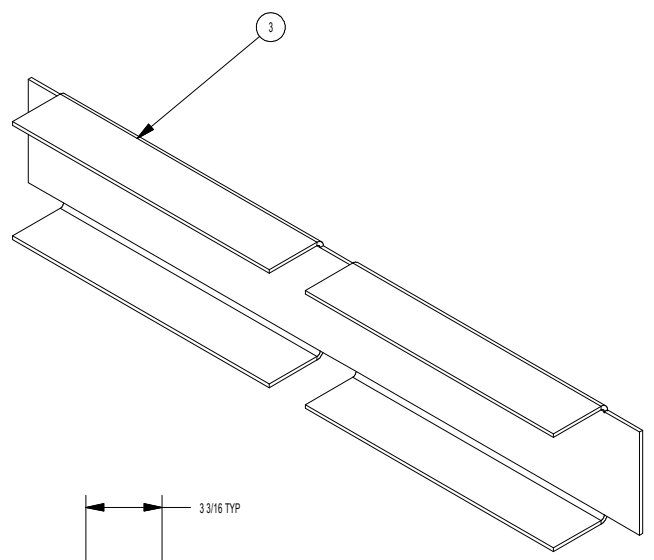
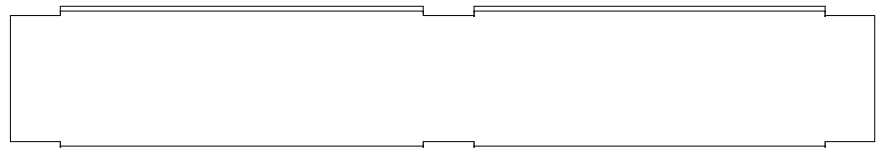
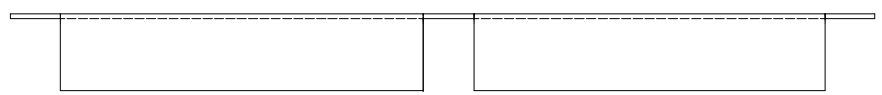
SECTION B-B  
SCALE 1/4



- NOTES:  
 1. PART TO BE FLAT WITHIN 1/8".  
 2. APPLY (1) COAT FLAT BLACK PAINT.

QTY	PART NUMBER	ITEM	MATERIAL		
2	CHANNEL - FRONT, MID, T-20SWD	3	C6 X 10.5# STRUCTURAL A36 STEEL CHANNEL X 26.625 LG		
1	CHANNEL - REAR, T20SWD	2	C6 X 10.5# STRUCTURAL A36 STEEL CHANNEL X 26.625 LG		
2	CHANNEL - SIDE, T-20SWD	1	HRS, 3/16		
9945-151-001 BASE ASSY - 1 PLACE, 6", T-350SWD					
STANDARD RAW STOCK COMMERCIAL TOLERANCES APPLY UNLESS EXCEPTED:			<b>DEXTER LAUNDRY INC.</b> FAIRFIELD, IOWA		
FRACTIONS ± 1/64	DECIMAL ± .005	ANGULAR ± 2'			
OTHERWISE SPECIFIED	REFERENCE (XXX)	DATE: 11/18/2016	SCALE: 1/4	SIZE: D	SHEET: 1 OF 2
DWG. NO. <b>9945-151</b>			REV: <b>PR</b>		

REVISION HISTORY		APP
REV	DESCRIPTION	
PR	RELEASE FOR PARTS AND SERVICE - 001	JP
	ECH-00374	3/8/17



QTY	PART NUMBER	ITEM	MATERIAL
2	CHANNEL - SIDE, T-20SWD	3	HRS, 3/16

1	CHANNEL - REAR (SAME AS ITEM #1 WITH NO HOLES)	2	ASME SA-36 C6X10.5 STEEL CHANNEL
QTY	PART NUMBER	ITEM	MATERIAL

2	CHANNEL - FRONT, MID, T-20SWD	1	ASME SA-36 C6X10.5 STEEL CHANNEL
QTY	PART NUMBER	ITEM	MATERIAL

2	CHANNEL - FRONT, MID, T-20SWD	3	C6 X 10.5# STRUCTURAL A36 STEEL CHANNEL X 26.625 LG
1	CHANNEL - REAR, T20SWD	2	C6 X 10.5# STRUCTURAL A36 STEEL CHANNEL X 26.625 LG
2	CHANNEL - SIDE, T-20SWD	1	HRS, 3/16
QTY	PART NUMBER	ITEM	MATERIAL

9945-151-001 BASE ASSY - 1 PLACE, 6", T-350SWD

STANDARD RAW STOCK COMMERCIAL TOLERANCES APPLY UNLESS OTHERWISE SPECIFIED:

FRACTIONS	± 1/64	SCALE	1/4	SIZE	D	SHEET	2 OF 2
DECIMAL	± .005	DATE	11/18/2016	DRWNG	JP	REV	
ANGULAR	± 7'	DWG NO	9945-151				
REFERENCE	(XXX)						

DEXTER LAUNDRY INC.  
FAIRFIELD, IOWA

9945-151

PR