



# T-1800 WASHER

Dexter X-Series Washer

## Vended laundry solutions you can depend on.

Dexter X-Series washers are designed to deliver exceptional performance, elevating both the customer and laundry ownership experience. Featuring the same Dexter quality with an extra touch, these washers provide the extra options and control customers want, while delivering the extra revenue and savings owners need to succeed.

A store full of laundry equipment is a big investment and choosing the right equipment is an important decision. Our products will provide you the efficiency, flexibility, performance, and durability you need to be confident in your choice. With free, live lifetime technical support and an industry leading 10-year limited warranty, you can be confident that we will stand behind every washer you invest in.

**Contact your Dexter Authorized Distributor today for more details.**

### DURABLE:

With heavy-duty bearings in a cast iron bearing housing, a welded steel spider and shaft, and a rugged frame design that has been proven over two decades, Dexter washers are built to last.

Every model is designed to withstand our 1,000 hour out-of-balance test.

The polished chrome doors and high-quality stainless steel tub, cylinder, top, and front keep washers looking great year after year.

### RELIABLE:

Our industry leading 10-year warranty covers the frame, tub, cylinder, shaft, seals, bearings, and bearing housing.

**A 5-year parts warranty covers the rest.**

We stand behind every machine you invest in with lifetime technical support.

### EFFICIENT:

X-Series reduces water usage and saves on expenses with adjustable water level options and a **leak detection system**. The water levels can be controlled remotely and DexterLive will provide alerts if a water leak occurs.

Next generation inverter drives lower electrical usage, improve performance, and extend the life of the motor.

Standard 100G extraction removes more water and enhances wash performance.

### INSTALLATION:

Adjustable final extract speeds and other customizable options allow Dexter washers to fit almost any installation.

### PROFITABLE:

Every Dexter machine offers a simple user interface with multiple language options, and detailed customer prompts.

X-Series controls work with DexterLive to allow you to create custom programs that fit your business needs and provide **easy connect to DexterPay via QR code**.

A variety of PLUS cycle features and promotion options will help you maximize revenue generation.

### OPTIONS:

Available with blue or black graphics.

Your washers can be shipped with coin acceptors or payment system ready.

Dexter X-Series washers are available in 20lb, 30lb, 40lb, 60lb, 90lb, and 120lb capacities.

# T-1800 WASHER SPECIFICATIONS

**Capacity:**

Dry Weight Capacity - lb (kg)	120	(54.4)
Cylinder Volume - cu ft (L)	17.4	(492.7)

**Speed:**

High Extract Speed - g (RPM)	100	(436)
Intermediate Extract Speed - g (RPM)	60	(338)
Washing Speed - g (RPM)	0.9	(39)
Motor Size - hp (kW)	7.8	(5.8)

**Dimensions:**

Cabinet Height - in (cm)	62 3/8	(158.4)
Cabinet Width - in (cm)	41 1/2	(105.4)
Cabinet Depth - in (cm)	48 1/4	(122.6)
Door Opening - in (cm)	19 1/4	(48.9)
Floor to Door Bottom - in (cm)	19 5/16	(49.1)
Cylinder Diameter - in (cm)	37	(94)
Cylinder Depth - in (cm)	28	(71.1)

**Weight:**

Net Weight - lb (kg)	1415	(641.8)
----------------------	------	---------

**Shipping Information:**

Shipping Weight - lb (kg)	1460	(662.2)
Shipping Height - in (cm)	69 1/4	(175.9)
Shipping Width - in (cm)	43 1/8	(109.5)
Shipping Depth - in (cm)	54	(137.2)

**Water Requirements:**

Water Inlet Size - in (mm)	3/4	(19)
Pressure (min/max) - psi (kPa)	30-120	(207-827)
Flow Rate Per Valve - gal/min (L/min)	9 & 12	(34 & 45)
Approximate Water Usage (per cycle) - gal (L)	95.6	(361.9)
Drain Diameter (O.D.) - in (cm)	3	(7.6)
Floor to Center of Drain - in (cm)	8 5/16	(21.1)

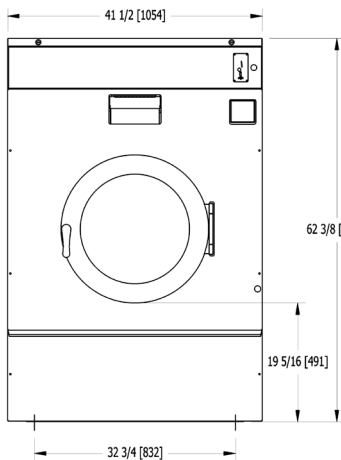
**Electrical Requirements:**

Model	Volts / Hz / Phase / Wiring	Circuit Breaker Amps / Running Amps / Wire Size
-12	208-240 / 60 / 1 / 2 wire + ground	30 / 16.6 / #10
-12	208-240 / 60 / 3 / 3 wire + ground	30 / 16.6 / #10
-39	230 / 50 / 1 / 2 wire + ground	30 / 16.6 / 5.3 mm <sup>2</sup>

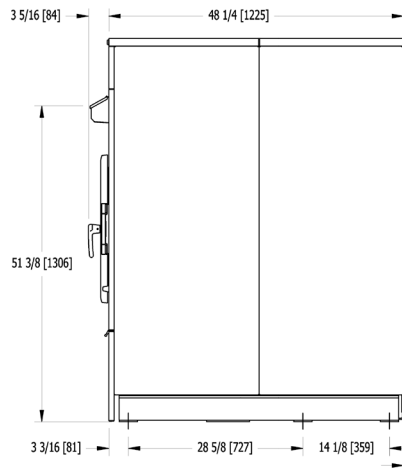
**Installation Recommendations:**

Minimum Clearance Between Machines - in (cm)	1/2	(1.3)
Minimum Clearance Behind Machines - in (cm)	24	(61)
Minimum Concrete Thickness - in (cm)	12	(30.5)

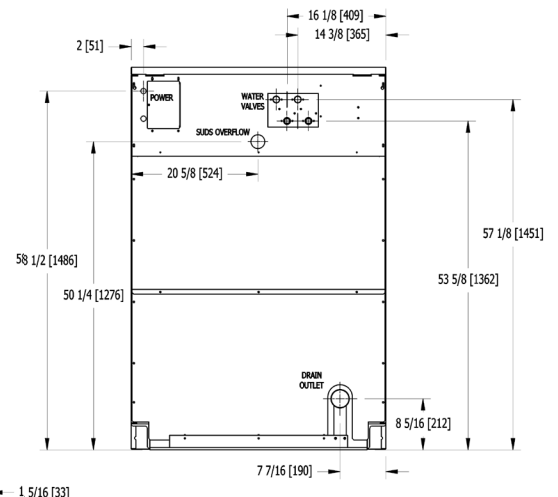
**MOUNTING DIMENSIONS**



**FRONT**



**SIDE**



**BACK**

Due to continuous product improvements specifications are subject to change, please consult the installation manual for the most accurate information.  
 \*Agency approvals vary based on machine configuration. Major approval bodies include ETL, CE and AGA. Dexter Laundry is ISO 9001:2015 certified by Intertek.