

O-Series

Soft Mount



O-Series Soft Mount OPL Express Plus (400G) Washers Parts Manual



DEXTER.
LAUNDRY



USE THE BLUE TABS LOCATED ON THE LEFT SIDE OF THE FOLLOWING DOCUMENT TO ADVANCE TO EACH SECTION.

O-Series Soft Mount OPL Accessories

WS0675XA-12EO 208-240 Volts 60 Hz
 WS0975XA-12EO 208-240 Volts 60 Hz

Single or Three Phase
 Single Phase or Three Phase

Key	Description	S-675	S-975	QTY
*	Hose, Water Supply 5/8" I.D. x 48"	9990-027-013	9990-027-013	2
*	Hose, Water Supply 5/8" I.D. x 48"		9990-027-011	2
*	Rubber Washer, Inlet Hose (furnished)	8641-242-000	8641-242-000	2
*	Strainer, Inlet Hose (furnished)	9565-003-001	9565-003-001	2
*	Rubber Washer, Inlet Hose (furnished)	8641-242-000	8641-242-000	2
*	Strainer, Inlet Hose (furnished)	9565-003-001	9565-003-001	2
*	Sealing compound RTV-45	8538-151-002	8538-151-002	1
*	Flow Restrictors (in dispenser)	9475-002-005	9475-002-005	2
*	Key Service Lock (6324)	6292-006-007	6292-006-007	1
*	USB Thumb Drive W/Operator Booklets all sizes	9150-045-002	9150-045-002	1
*	Base Assembly - 1 Place, 6"	9945-164-001	9945-163-001	1
*	Leveling Leg	8544-008-001	8544-008-001	4
*	Leveling Leg Kit	9732-361-001	9732-361-001	1

Kits, Assemblies & Common Parts

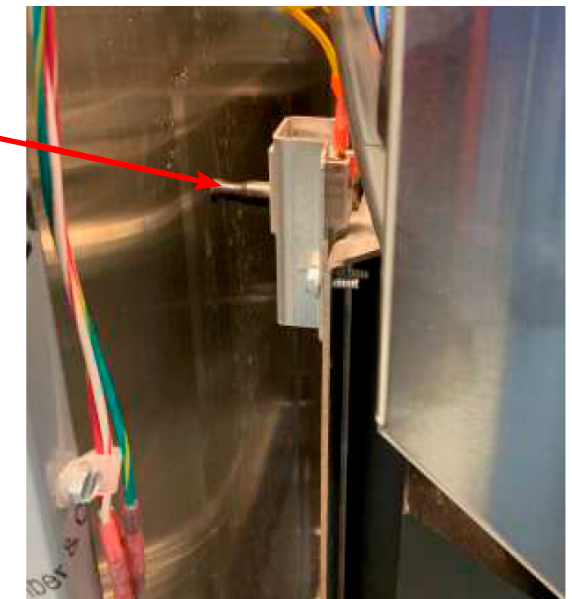
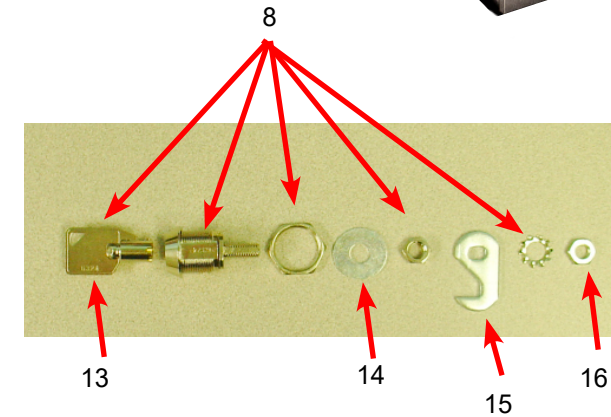
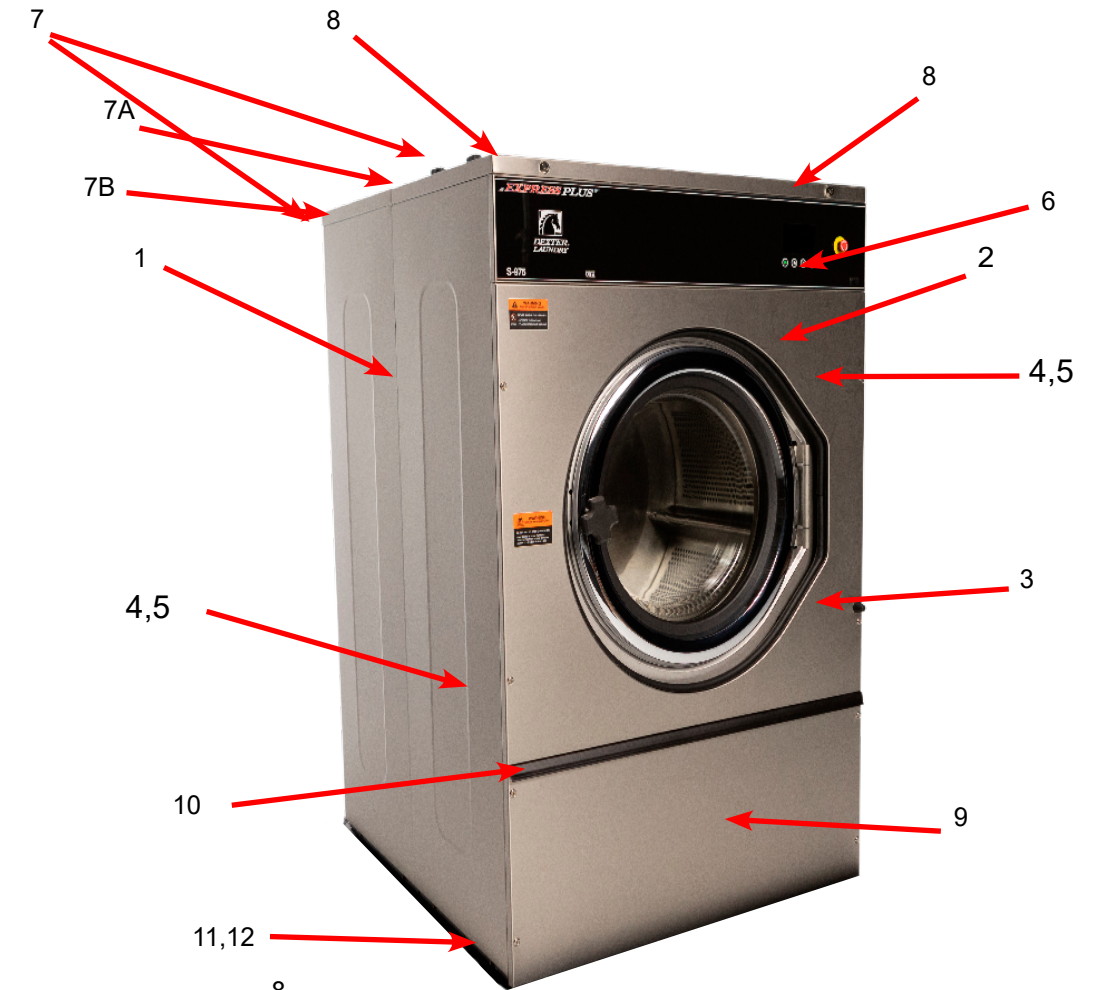
Description	S-675	S-975
Drain Valve 3"	9379-204-001	9379-204-001
Water Valve (Dual)	9379-183-012	9379-183-012
Water Valve (Single)	9379-194-001	9379-194-001
Diaphragm	9118-049-003	9118-049-003
Cylinder Plug (1.5" Plastic)	9456-041-007	9456-041-007
Water Pressure Sensor Assembly	9474-007-001	9474-007-001
Drive Display	9150-058-001	9150-058-001
Breaking Resistor 160 Ohms	9483-004-003	9483-004-003
Transformer	8711-017-001	8711-017-001
Main Control Board	9857-230-003	9857-230-003
Data Cable	9806-023-005	9806-023-005
Door Lock Assembly	9885-032-001	9885-032-001
Door Handle Only	9244-096-001	9244-096-001
Front Panel Screw	9545-008-014	9545-008-014
Front Panel Finisher Washer	8641-585-001	8641-585-001
Front Panel Expansion Nut	8641-585-001	8641-585-001
Soap Box Screw	9545-008-012	9545-008-012
Soap Box Spring Nut	8640-399-007	8640-399-007
Lock, Top (w/Key)	8650-012-003	8650-012-003
Fuse 1.5amp	8636-018-001	8636-018-001
Fuse 2.0amp	8636-018-005	8636-018-005
Door Glass Gasket	9206-431-002	9206-431-002

Wiring Harness Parts Group

Key	Description	S-675	S-975	
*	Cableassy-usb,snapin	9806-024-001	9806-024-001	1
*	Cableassy-data,rs485,49"	9806-023-005	9806-023-005	1
*	Wiringharness-doorlock/doorsw	9628-016-002	9628-016-001	1
*	Wiringharn-pwr/VFD/ps		9627-932-003	1
*	Wiringharness-15pin,injection		9627-935-003	1
*	Wiringharness-15pin,non-inj	9628-011-001	9628-011-001	1
*	Wireasy-jumper,blk		8220-117-002	2
*	Wireasy-brn,#21,3"	8220-057-035	8220-057-035	1
*	Wireasy-wht,3"	8220-057-036	8220-057-036	1
*	Wireasy-jumper,wht/red	8220-123-002		1
*	Wireasy-jumper,wht/red		8220-119-003	2
*	Wireasy-red/pnk,8"		8220-108-012	1
*	Wireasy-red/gry,8"		8220-108-013	1
*	Wiringharn-ctrl,graph,can,wshr	9627-922-002	9627-922-002	1
*	Wiringharness-main, nonhtd	9628-010-001	9628-010-001	1
*	Wiringharness-chemical,v2.0wshr	9627-927-001	9627-927-001	1
*	Wiringharness, drsw/VFD/stp	9627-928-004	9627-928-004	1
*	Wiringharness-cntrl/relay,v2.0	9627-921-001	9627-921-001	2
*	Wiringharness-wps/therm	9628-017-001	9628-017-001	1
*	Wiringharness-pwrup,v2.0wshr	9628-012-001	9628-012-001	1
*	Wireasy-jumper,v2.0,relaypcb	8220-159-005	8220-159-005	1
*	Wireasy-jumper,v2.0,relaypcb	8220-159-006	8220-159-006	1
*	Wireasy-wht/org,17 1/2"	8220-062-053	8220-062-053	1
*	Wireasy-org,17"	8220-062-052	8220-062-052	1
*	Wiring harness-drkrelay	9628-013-001	9628-013-001	1
*	Wiring Harness - rebal, input	9628-014-001	9628-014-001	1
*	Wiring harness, maxdispsto	9628-015-001	9628-015-001	1
*	Wireasy-2.0,s675	8220-158-034		1

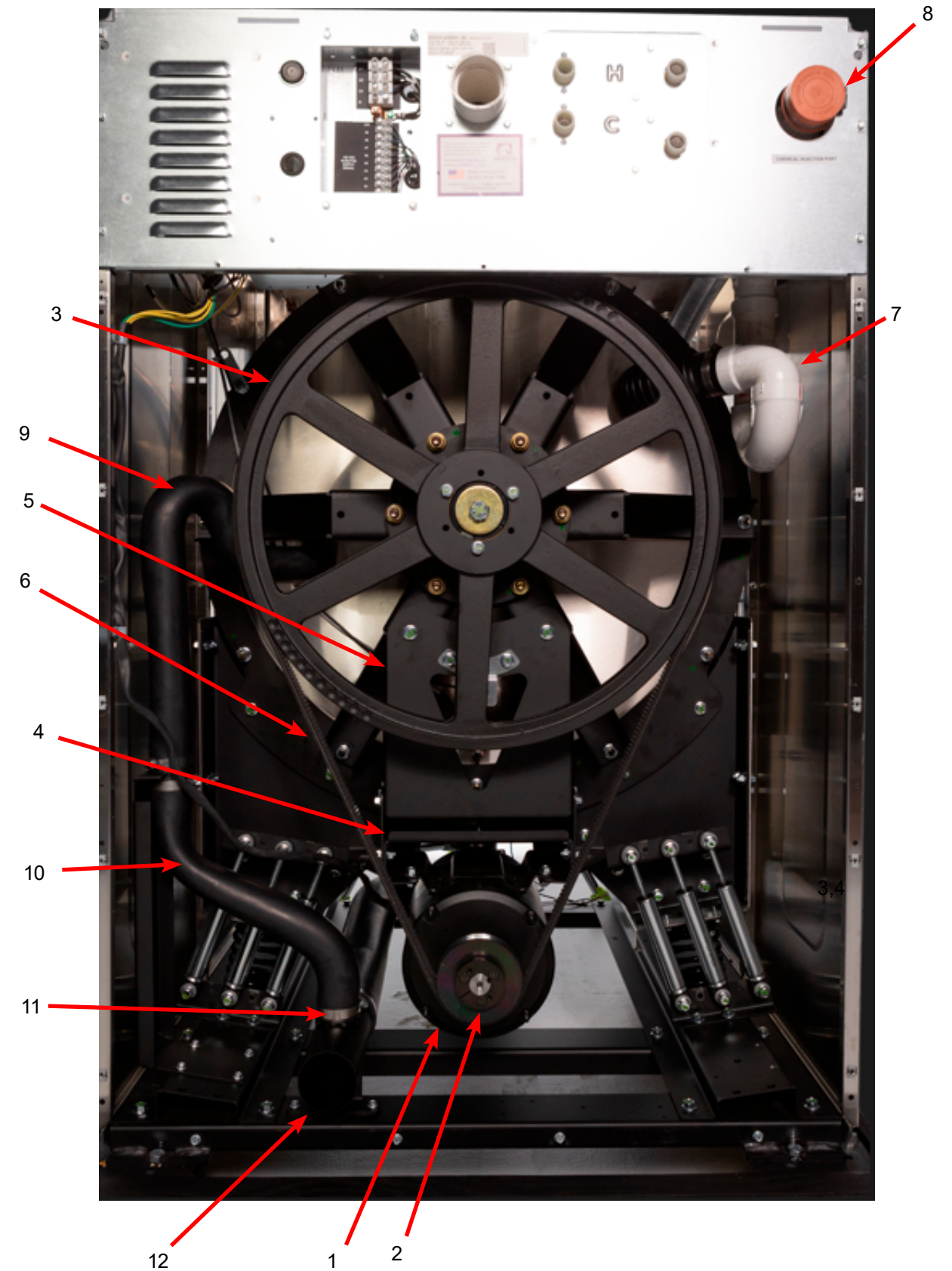
Cabinet and Front Panel Group Parts Group

Key	Description	S-675	S-975	Qty
1	Panel, Side Right - stainless	9989-713-001	9989-707-001	1
1	Panel, Side Left - stainless	9989-713-002	9989-707-002	1
*	Bolt-1/4-20x1/2 (side panel to baser)	9545-018-013	9545-018-013	8
2	Panel Assy, Front	9989-712-001	9989-706-001	1
*	Trim Edge Protector	9578-105-003	9578-105-002	1
3	Bumper Loading Door	9051-055-001	9051-055-001	1
*	Nut, 1/4 x 20 for bumper	8640-414-003	8640-414-003	1
*	Screw, #10B x 1/2	9545-008-026	9545-008-026	12
*	Nut, Expansion- To Control Panel	8640-442-001	8640-442-001	2
4	Screw, Flat Head- Front to Sides	9545-008-014	9545-008-014	4
5	Washer, Finish	8641-585-001	8641-585-001	4
*	Nut, Expansion-To Front Panel	8640-442-001	8640-442-001	12
*	Label, Door Opening (Black)	8502-788-001	8502-757-001	1
*	Panel, Control (Mounts Nameplate)	9989-715-001	9989-708-001	1
*	Screw, Control Panel to Sides	9545-008-026	9545-008-026	6
6	Nameplate Decal, Control Black	9412-263-001	9412-262-001	1
7A	Panel Top Front		9989-704-001	1
7B	Panel Top Rear		9444-081-001	1
7	Top Panel (One Piece)	9444-133-001	9444-132-001	1
8	Lock, Top (w/Key)	8650-012-003	8650-012-003	1
*	Lock Spacer	9538-139-001	9538-139-001	1
9	Door, Lower Service, Includes Handle	9960-286-012	9960-286-001	1
10	Handle (bumper guard)	9244-086-008	9244-086-007	1
*	Rivet Blind 3/16" Alum	9491-009-003	9491-009-003	4
11	Screw Mtg., Flat Head 10Bx1 3/4	9545-008-014	9545-008-014	4
12	Washer, Finish	8641-585-001	8641-585-001	4
13	Key, Top- # 6324	6292-006-007	6292-006-007	2
14	Washer Flat 5/16	8641-581-008	8641-581-008	2
15	Cam, Lock-Top	9095-049-001	9095-049-001	2
16	Nut, 7mm x 1.0 Hex	8640-426-001	8640-426-001	1
17	Switch, Max Displacement	9539-487-002	9539-487-002	1



Rear View Access Parts Group

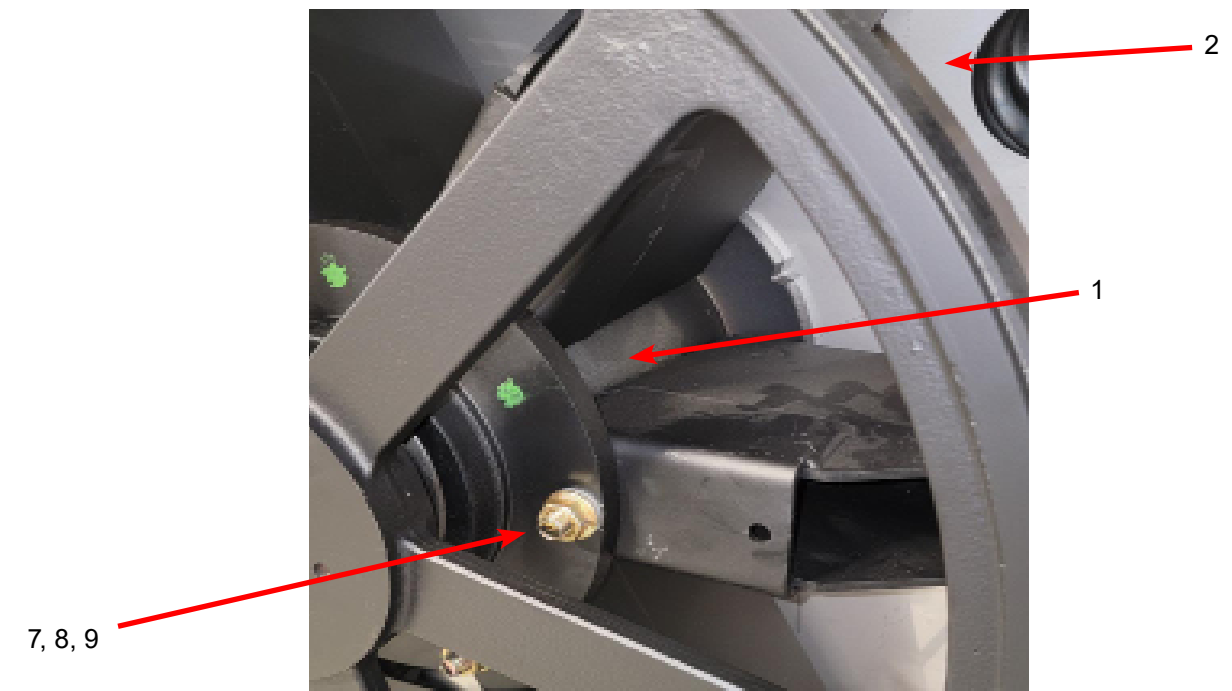
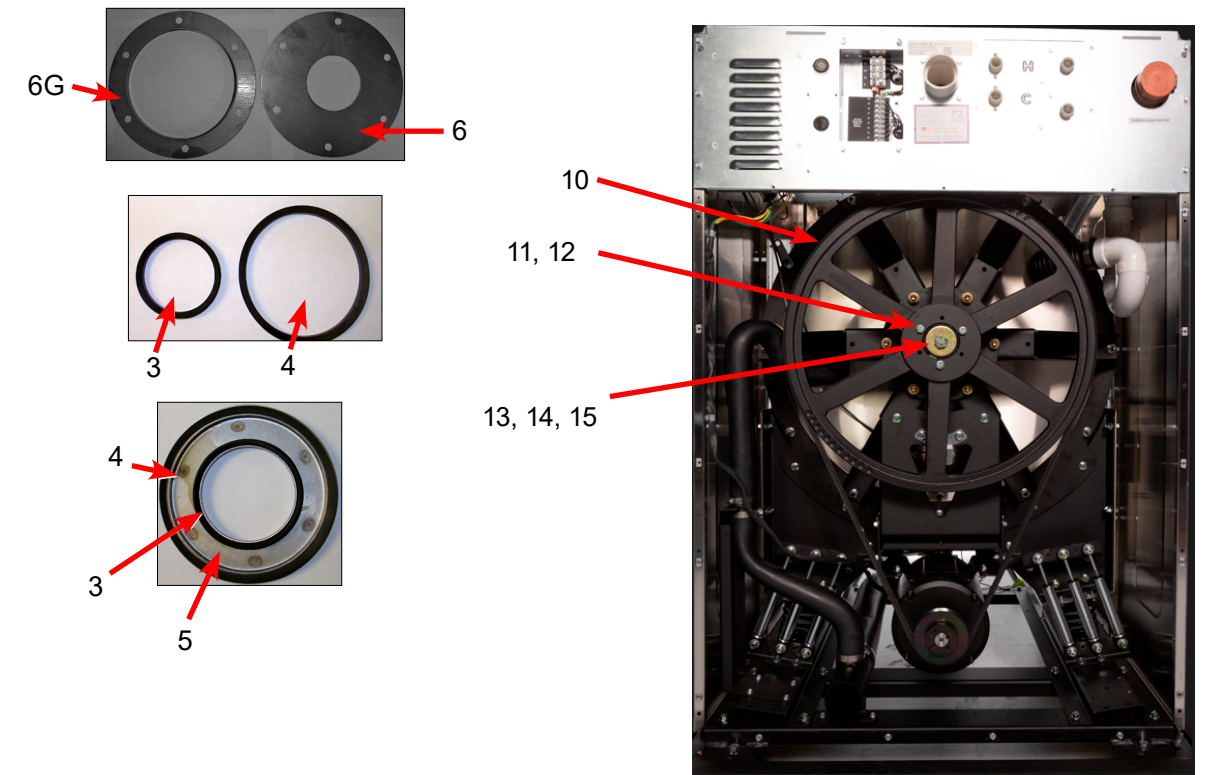
Key	Description	S-675	S-975	
1	Drive Motor	9376-338-001	9376-326-003	1
2	Pulley, Motor	9453-193-001	9453-190-001	1
*	Set Screw	9545-014-007	9545-014-015	1
*	Nut	8640-400-002	8640-400-002	1
*	Split TaperBushing (motor pulley)	9053-077-001	9053-077-001	1
*	Screw taper bushing 1/4-20x1	9545-018-024	9545-018-024	3
3	Pulley, Driven	9453-168-006	9453-176-006	1
4	Bracket-Motor, Hang	9029-358-002	9029-345-002	1
*	Screw 3/8-16 3/4	9545-029-015	9545-029-015	16
*	Nut 3/8-16	8640-415-004	8640-415-004	16
5	Bracket-Motor Support	9985-215-002	9985-212-002	1
*	Screw 3/8"-16 x 2"		9545-029-011	3
*	Washer, 3/8"		8641-582-003	3
*	Screw 3/8"-16 x 2"	9545-029-011		2
*	Washer, 3/8"	8641-582-003		2
6	Drive Belt	9040-079-010	9040-079-006	1
*	Screw 1/2-6X3 1/2	9545-017-015	9545-017-015	4
*	Washer, Flat 1/2	8641-581-001	8641-581-001	4
*	Panel Assy., Back, Lower	9444-089-001	9444-082-001	1
*	Panel Assy., Back, Upper	9444-090-001	9444-083-001	1
*	Screw Panel Mtg.#10Bx1/2"	9545-008-026	9545-008-026	AR
*	Nut, Expansion	8640-442-001	8640-442-001	AR
*	Screw, To Base-1/4" x 3/4"	9545-030-002	9545-030-002	4
7	Injection assy	9883-017-001	9883-016-001	1
*	Hose, Injection Tube to Tub	9242-473-001	9242-473-001	1
*	Clamp, Injection Hose	8654-117-014	8654-117-014	2
8	Cap-injectorassembly	0935-127-001	0935-127-001	1
*	Clamp-hose		8654-117-017	2
*	Clamp-hose	8654-117-015	8654-117-015	2
*	Clamp-hose	8654-117-009		1
9	Hose-Overflow Upper	9242-477-001	9242-471-001	1
*	Tube Assy-Overflow	9915-136-002	9915-136-002	1
10	Hose-Overflow Lower	9242-475-001	9242-475-001	1
11	Clamp-Hose Over Flow	8654-117-014	8654-117-014	4
*	Bracket-Overflow Hose	9029-351-001	9029-351-001	1
12	Drain Tube Assembly	9915-134-002	9915-134-002	1



Cylinder, Seals & Bearings Parts Group

Key	Description	S-675	S-975	
1	Housing, Bearing- Assembly (items #2-#6)	9803-186-001	9803-231-001	1
*	Housing, Bearing	9241-180-002	9241-208-002	1
*	Bearing, Front (LARGE)	9036-159-005	9036-159-006	1
*	Bearing, Rear (SMALL)	9036-159-004	9036-159-005	1
*	Spacer, Bearing	9538-167-001	9538-190-001	1
*	Ring, Bearing Retainer	9487-238-003	9487-238-004	1
2	Tub Assembly	9930-189-001	9930-188-001	1
3	Seal, Small	9532-140-006	9532-140-007	1
4	Seal, Large	9532-140-009	9532-140-008	1
5	Ring Assy, Seal Mounting	9950-048-001	9950-052-001	1
6G	Ring-Seal Tub Back	9487-291-001	9487-295-001	1
6	Ring-Seal Mating	9487-261-003	9487-261-006	1
*	Bolt, Tub End of Bearing Housing, Bolt from inside Tub	9545-060-001	9545-060-004	6
*	Nut, Hex	8640-425-001	8640-425-001	6
7	Screw-Hex Cap, (Bearing Housing to Spider Assy)	9545-060-001	9545-067-001	6
8	Washers Interlocking (Bearing Housing to Spider Assy)	8641-591-002	8641-591-001	12
9	Nut 1/2-20 (Bearing Housing to Spider Assy)	8640-425-001	8640-443-001	6
10	Pulley, Driven	9453-168-006	9453-176-006	1
11	Bolt, 3/8"-16 x 2"		9545-029-011	3
12	Washer, 3/8"		8641-582-003	3
11	Bolt, 3/8"-16 x 2"	9545-029-011		2
12	Washer, 3/8"	8641-582-003		2
*	Bushing Taperlock		9053-078-002	1
13	Washer-Flat .675x2-1/2x1/4		8641-581-043	1
14	Lockwasher-Exttooth, 5/8		8641-582-018	1
15	Bolt, 5/8-11x1 1/2	9545-060-001	9545-060-001	1
*	Tub & Cylinder Assy	9869-048-001	9869-047-001	1

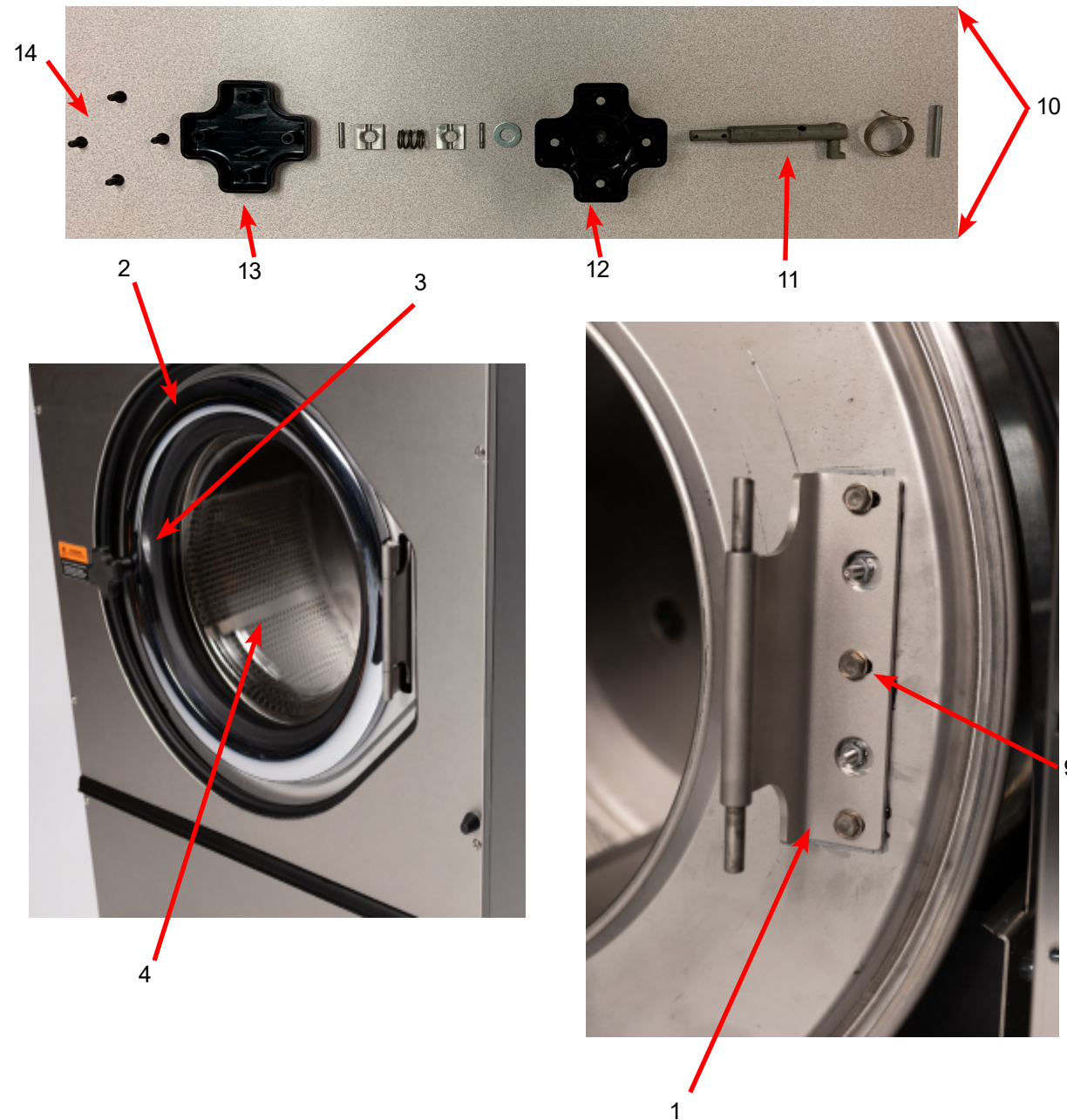
NOTE: Interlocking Washers are ONE-time use.



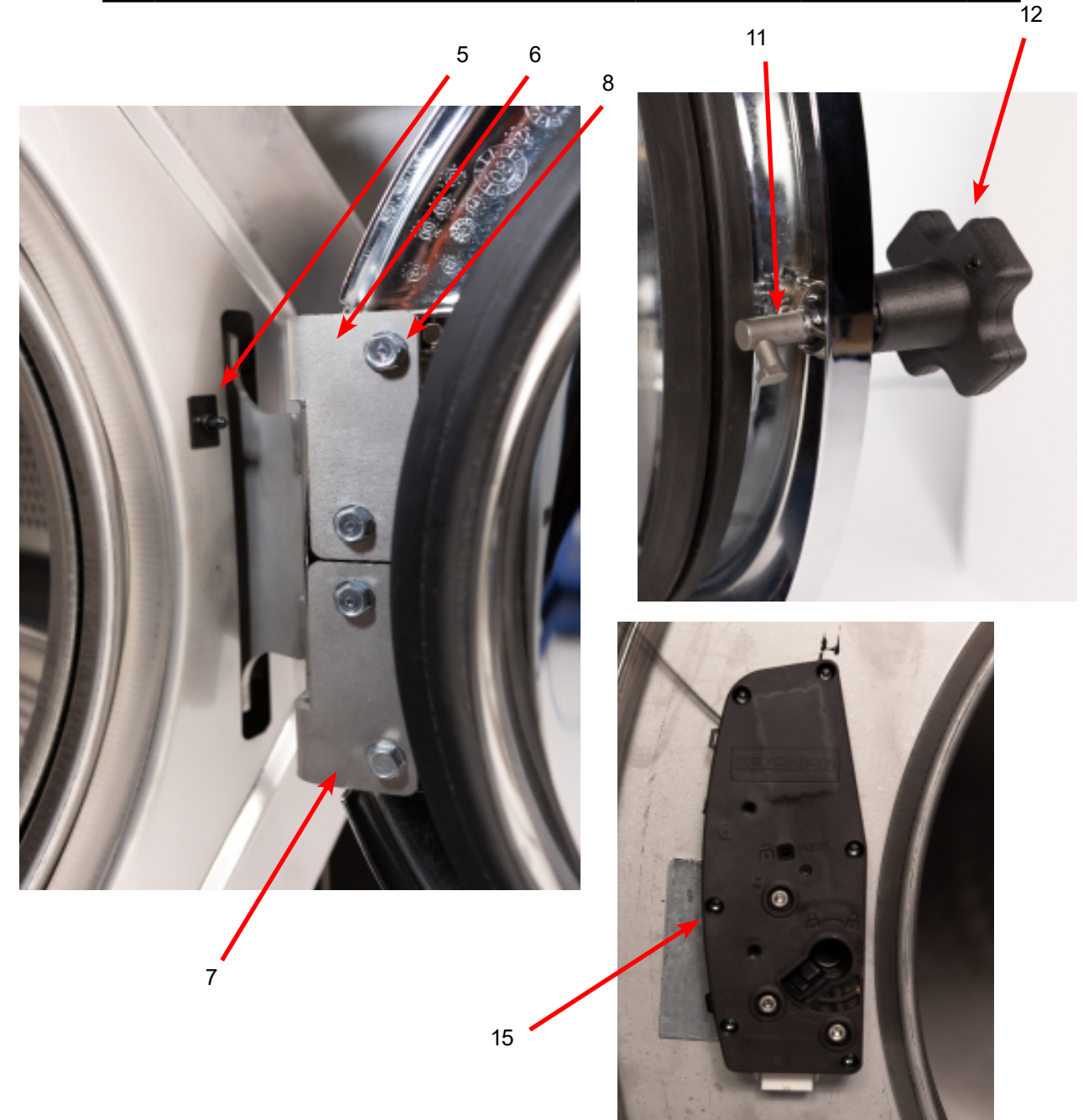
Key	Description	S-675	S-975	
*	Cylinder Assy	9848-168-001	9848-173-001	1
*	Tub Front	9974-024-001	9974-022-001	1
*	Gasket, Tub Front	9206-421-004	9206-421-002	1
*	Ring Assy, Tub Mtg-Front Clamp	9950-063-001	9950-055-001	1
*	Bolt, Top Front Ring 3/8"-16 x 3 1/2"	9545-029-009	9545-029-009	1
*	Nut 3/8"-16	8640-415-001	8640-415-001	1

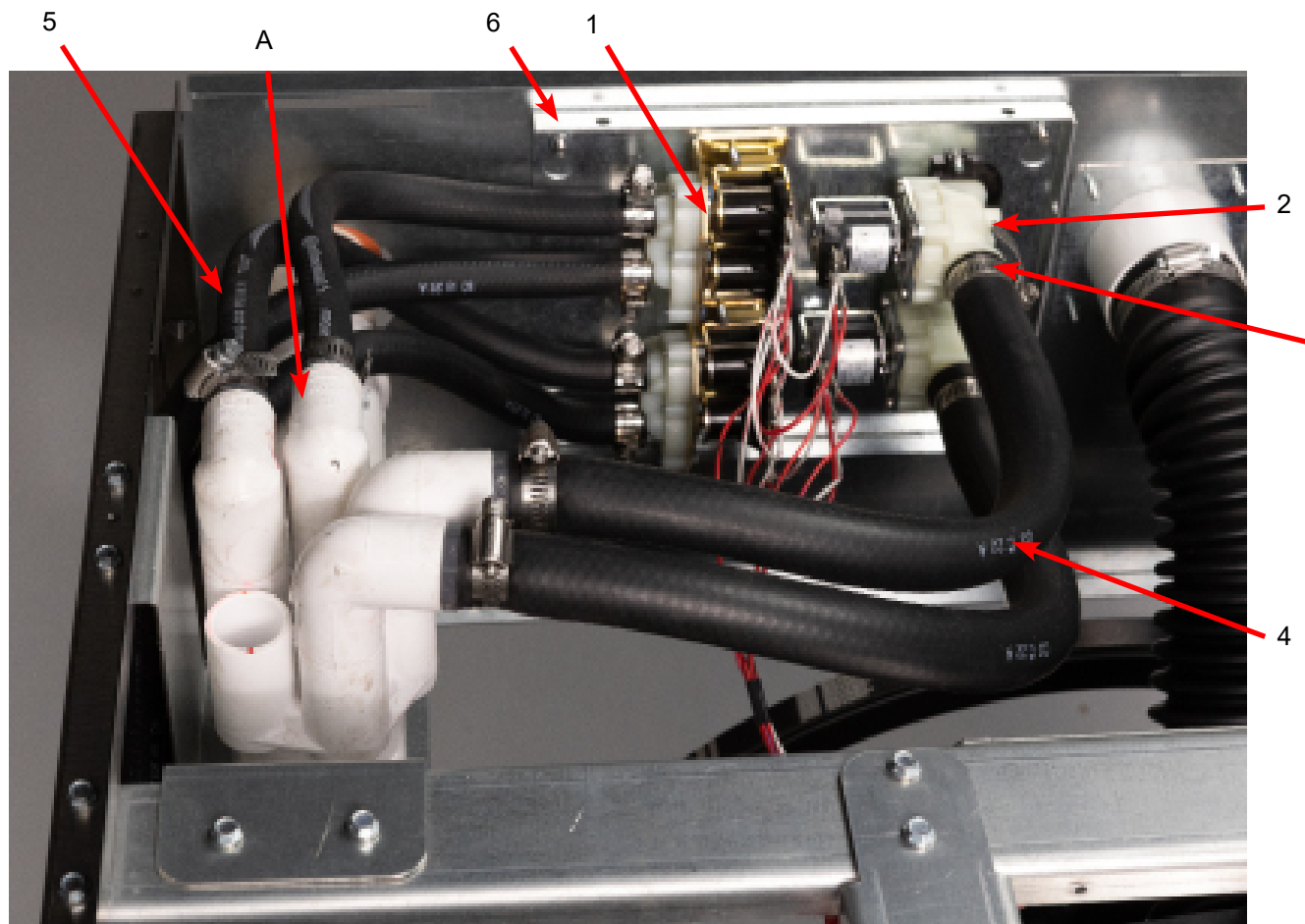
Loading Door, Hinge, & Door Lock Parts Group

Key	Description	S-675	S-975	QTY
1	Door Hinge Assembly (mounts to tub front)	9955-033-001	9955-032-001	1
*	Door Assembly, Complete	9960-341-001	9960-336-001	1
2	Door Ring	9487-265-002	9487-275-001	1
3	Door Gasket	9206-419-002	9206-431-002	1
*	Sealing compound RTV-45	8538-151-002	8538-151-002	1
4	Door Glass Window	9635-016-001	9635-020-001	1
5	Switch, Door Hinge Close (Plunger)	9539-501-001	9539-501-001	1
6	Top Door Hinge Leaf	9845-011-001	9845-009-001	1
7	Bottom Door Hinge Leaf	9845-012-001	9845-010-001	1
8	Screw, Door Hinge Leaf Mtg	9545-056-002	9545-056-002	4
9	Screw, Loading Door Hinge Mtg - 5/16-18 x 3/4	9545-014-009	9545-014-009	3
*	Lockwasher	8641-582-009	8641-582-009	3
*	Shim-loading door hinge	9552-036-001	9552-043-001	2



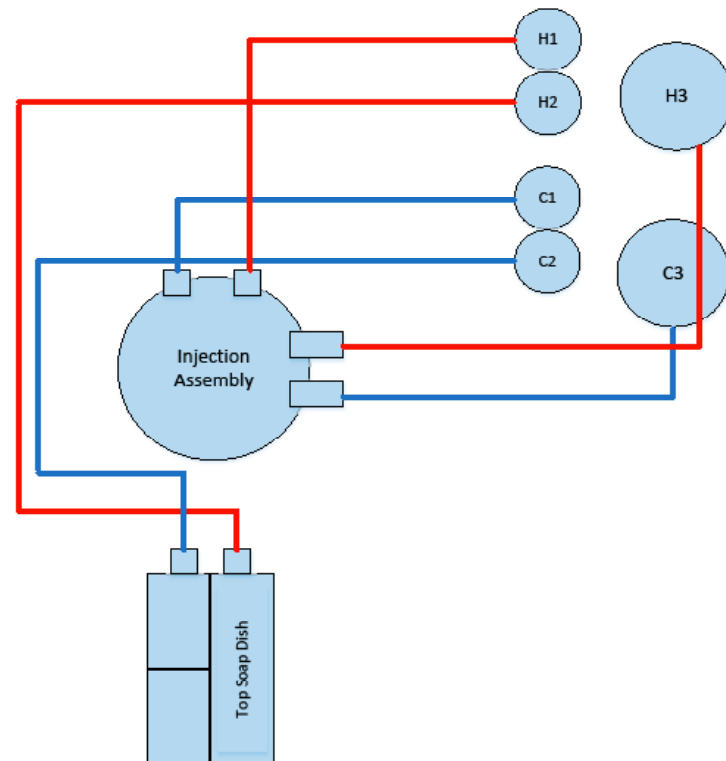
Key	Description	S-675	S-975	Qty
10	Door Handle Assembly (includes parts 10-11)	9965-028-001	9965-028-001	1
11	Door Lock Shaft Assembly	9913-137-001	9913-137-001	1
*	Pin-Handle Clutch	9451-203-001	9451-203-001	2
*	Disc-Clutch, Handle	9116-039-001	9116-039-001	2
*	Spring-Clutch, Handle	9534-370-001	9534-370-001	1
*	Washer, Flat	8641-581-009	8641-581-009	1
12	Handle, Door	9244-096-001	9244-096-001	1
*	Pin, Door Handle	9451-181-009	9451-181-009	1
*	Spring-Door Handle Return	9534-371-001	9534-371-001	1
13	Cover, Door Handle	9074-396-001	9074-396-001	1
14	Screw, Door Handle Cover	9545-008-038	9545-008-038	4
15	Door Lock Assembly	9885-032-001	9885-032-001	1
*	Shim-Door Lock	9552-051-001	9552-051-001	3



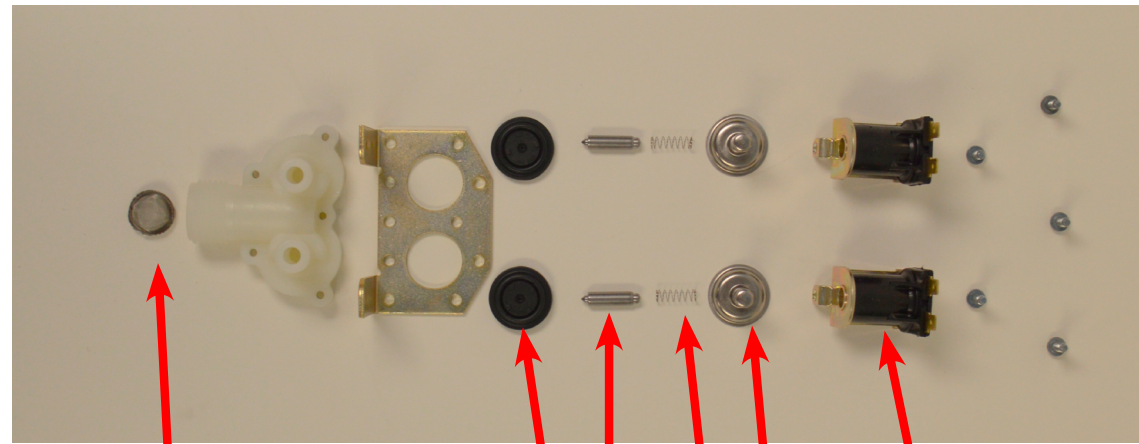


Water Inlet Parts Group

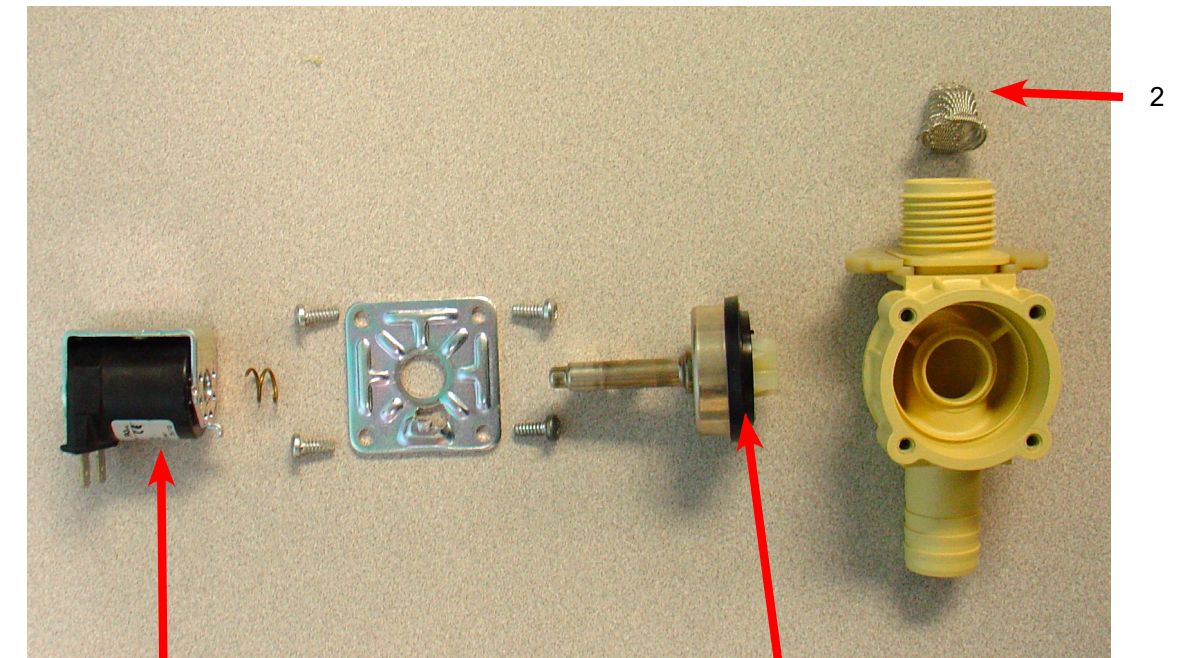
Key	Description	S-675	S-975	Qty
A	Injector Assembly	9883-017-001	9883-016-001	1
1	Valve, Water Inlet (dual outlet) (see Water Inlet Valve Break-down for individual parts)	9379-183-012	9379-183-012	2
*	Screw, Valve Mtg	9545-008-026	9545-008-026	4
2	Valve Water Inlet (single outlet)		9379-194-001	2
*	Screw, Valve M4x0.7x8mm		9545-064-001	4
3	Clamp-Water Valves	8654-117-015	8654-117-015	AR
*	Shield over Water Valves Plastic	9550-194-001	9550-195-001	1
*	Clip-Push	9083-121-001	9083-121-001	3
*	Flow resistor	9475-002-005	9475-002-005	4
4	1/2 inch hose, cut to length	9242-453-001	9242-453-001	AR
5	7/8 inch hose, cut to length		9242-466-001	AR
6	Plate-Water Valves, Mounting	9452-864-001	9452-862-001	1



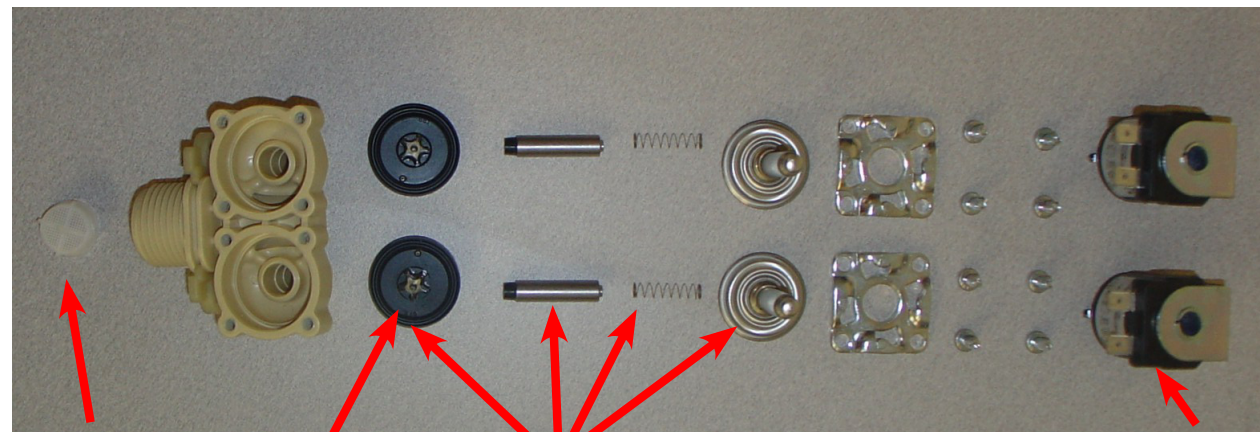
Water Inlet Valve Breakdown



Key	Description	S-675	S-975	Qty
*	Valve, Water Inlet (includes 1 thru 6)	9379-183-012	9379-183-012	2
1	Screen, Inlet end of valve	9555-056-001	9555-056-001	2
2	Coil Assy., 120 V Invensys	9089-017-001	9089-017-001	2
*	Diaphragm Invensys (EPDM)	9118-049-001	9118-049-001	2
*	Diaphragm Invensys (Viton)	9118-049-002	9118-049-002	2
3	Diaphragm Invensys (EPDM NSF)	9118-049-003	9118-049-003	2
4	Guide, Solenoid Invensys	9211-021-002	9211-021-002	2
5	Armature Invensys	9015-008-001	9015-008-001	2
6	Spring, Armature Invensys	9534-298-001	9534-298-001	2



Key	Description	S-675	S-975	QTY
*	Single Coil Water Valve Mueller		9379-194-001	1
1	Diaphragm Mueller		9118-055-001	1
2	Filter Mueller		9183-046-001	1
3	Coil Mueller		9089-051-001	1

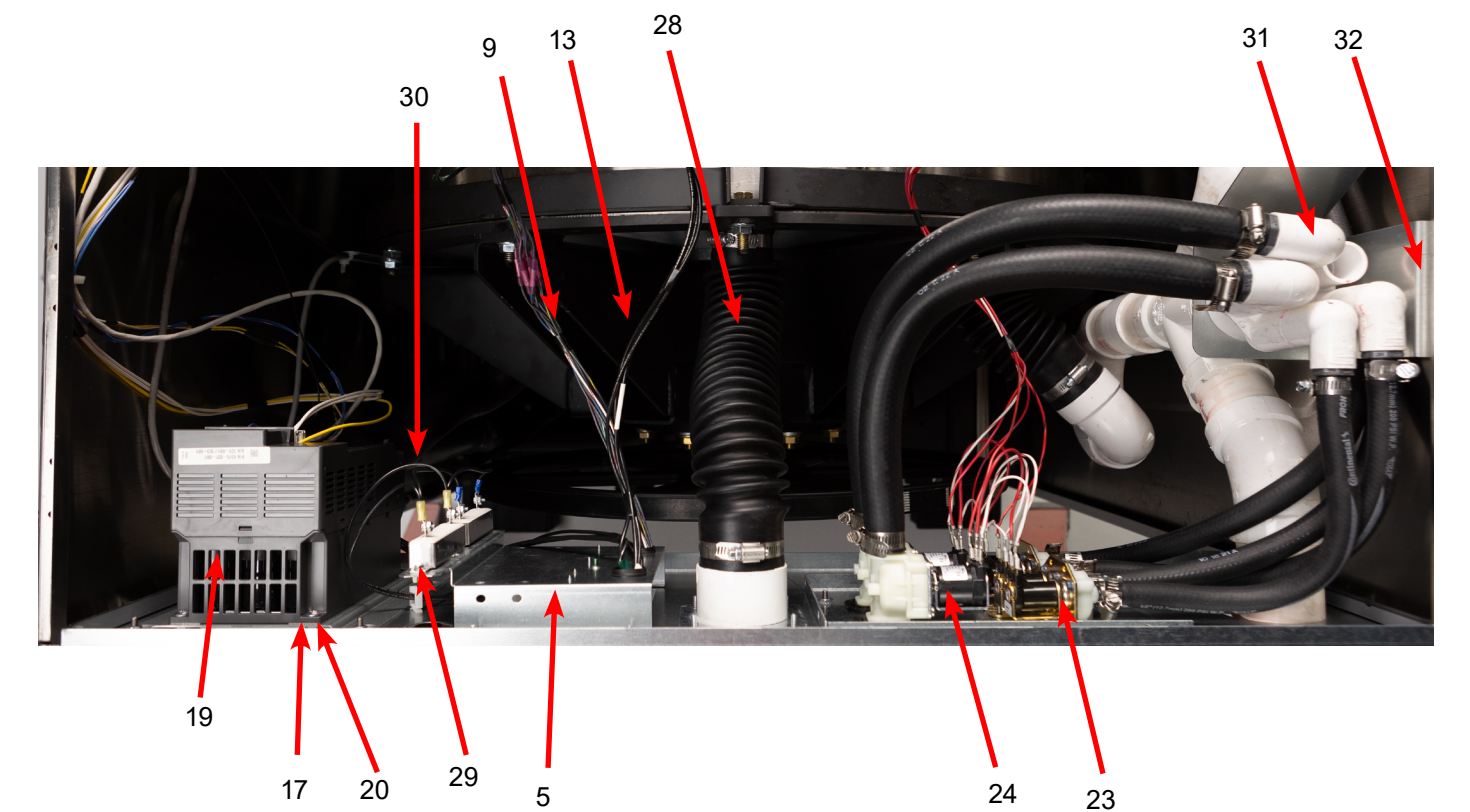
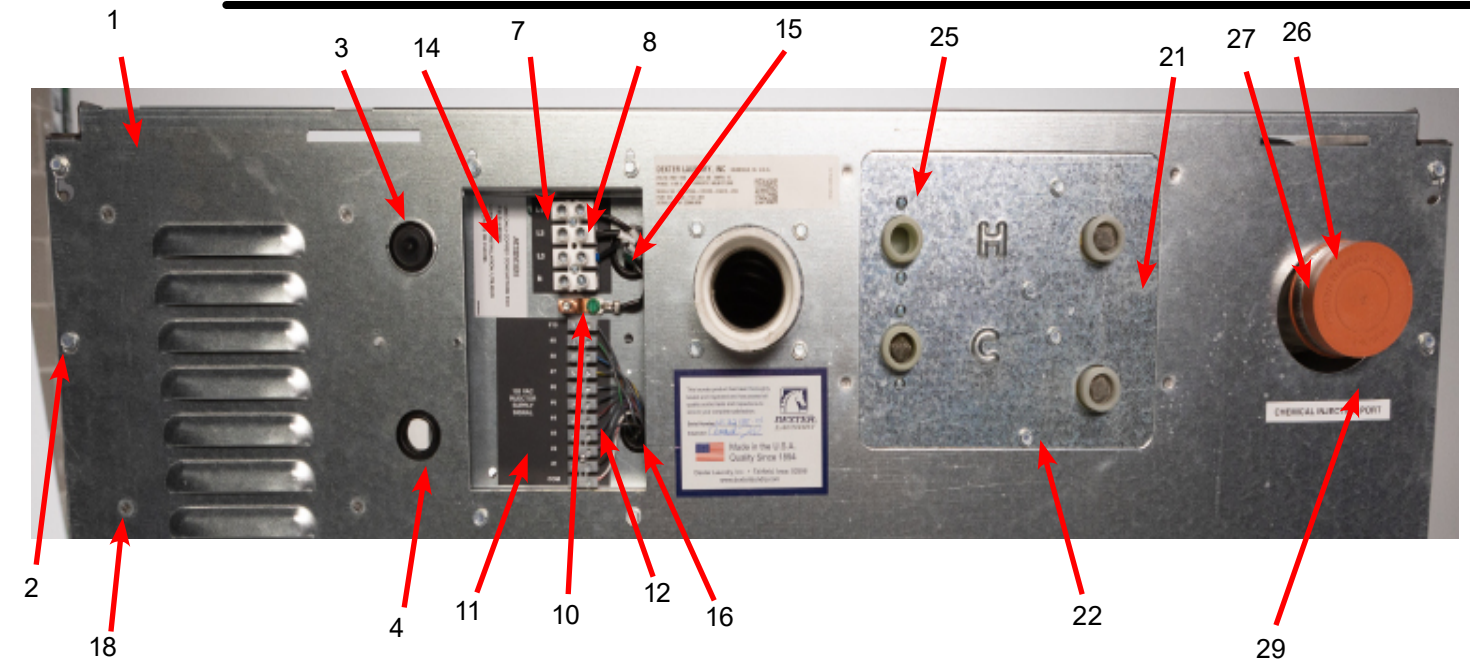


Optional Water Valve

Key	Description	S-675	S-975	QTY
*	Dual Coil Water Valve Mueller	9379-192-001	9379-192-001	1
7	Valve Water Body Complete(no coil)	9379-192-002	9379-192-002	1
8	Diaphragm Mueller	9118-054-001	9118-054-001	2
9	Filter Mueller	9183-046-001	9183-046-001	2
10	Coil Mueller	9089-051-001	9089-051-001	2
11	Diaphragm Assembly Mueller Includes	9785-001-001	9785-001-001	2

Rear Channel Parts Group

	Description	S-675	S-975	Qty
1	Channel Assembly Rear	9947-063-001	9947-058-001	1
2	Screw #10Bx1/2	9545-008-026	9545-008-026	AR
*	Nut, Expansion	8640-442-001	8640-442-001	AR
3	Plug, 7/8"	9456-041-006	9456-041-006	1
4	Bushing, 7/8"	9053-067-002	9053-067-002	1
5	Bracket-Terminal Block Assy	9029-326-001	9029-326-001	1
6	Screw #10Bx1/2	9545-008-026	9545-008-026	4
7	Strip-Terminal marker, Power	9558-025-001	9558-025-001	1
8	Terminal Block-Power	9897-033-002	9897-033-002	1
*	Screw-6ABx3/4	9545-031-001	9545-031-001	2
9	Harness-Power Terminal Block	9627-932-003	9627-932-003	1
10	Terminal Lug, Solderless	8652-134-001	8652-134-001	1
*	Lockwasher-Exttooth, #10	8641-582-006	8641-582-006	1
*	Screw-10-32ttX1x1/2Grn	9545-008-027	9545-008-027	1
11	Strip-Terminal Marking, Injector	9558-036-001	9558-036-001	1
12	Terminal Block-Injector	9897-032-003	9897-032-003	1
*	Screw-4Bx5/8ss	9545-053-002	9545-053-002	2
13	Harness-Injection	9627-935-003	9627-935-003	1
14	Label-Warning	8502-639-001	8502-639-001	1
15	Bushing-Insulated, 3/4"	9053-067-001	9053-067-001	1
16	Bushing-Insulated, 1"	9053-067-004	9053-067-004	1
*	Cover, Terminal Block	9074-267-001	9074-267-001	1
*	Screw #10Bx1/2	9545-008-026	9545-008-026	1
17	Plate-Drive mounting	9452-848-001	9452-848-001	1
18	Nut, #10-32UNF, 2B	8640-413-002	8640-413-002	4
19	VFD	9375-037-008	9375-037-007	1
*	VFD Cooling Fan	9189-017-001	9189-017-001	1
20	Nut, #10-32UNF, 2B		8640-848-001	4
*	Cable, Data	9806-023-005	9806-023-005	1
21	Plate-Water Valves, Mounting	9452-864-001	9452-862-001	1
22	Nut, #10-32UNF, 2B	8640-413-002	8640-413-002	4
23	Valve-Water, Duel Coil	9379-183-012	9379-183-012	2
*	Screw #10Bx1/2	9545-008-026	9545-008-026	4
24	Water-Valve, Single Coil		9379-194-001	2
25	Screw-Phillips, 4mx0.7x8mm		9545-064-001	4
*	Shield, Water Valves	9550-194-001	9550-195-001	1
*	Clip-Push	9083-121-001	9083-121-001	3
26	Cap-Injector Assy	0935-127-001	0935-127-001	1
27	Clamp	8654-117-015	8654-117-017	2
28	Hose-Suds Overflow	9242-474-001	9242-474-001	1
29	Resistors (160 Ohm)	9483-004-003	9483-004-003	2
*	Screws (Mounting)	9545-045-002	9545-045-002	3
30	Jumper Wires	8220-117-002	8220-117-002	2
*	Screw-#6-32x5/16	9545-044-006	9545-044-006	4
*	Nut-#6-32	8640-411-003	8640-411-003	4

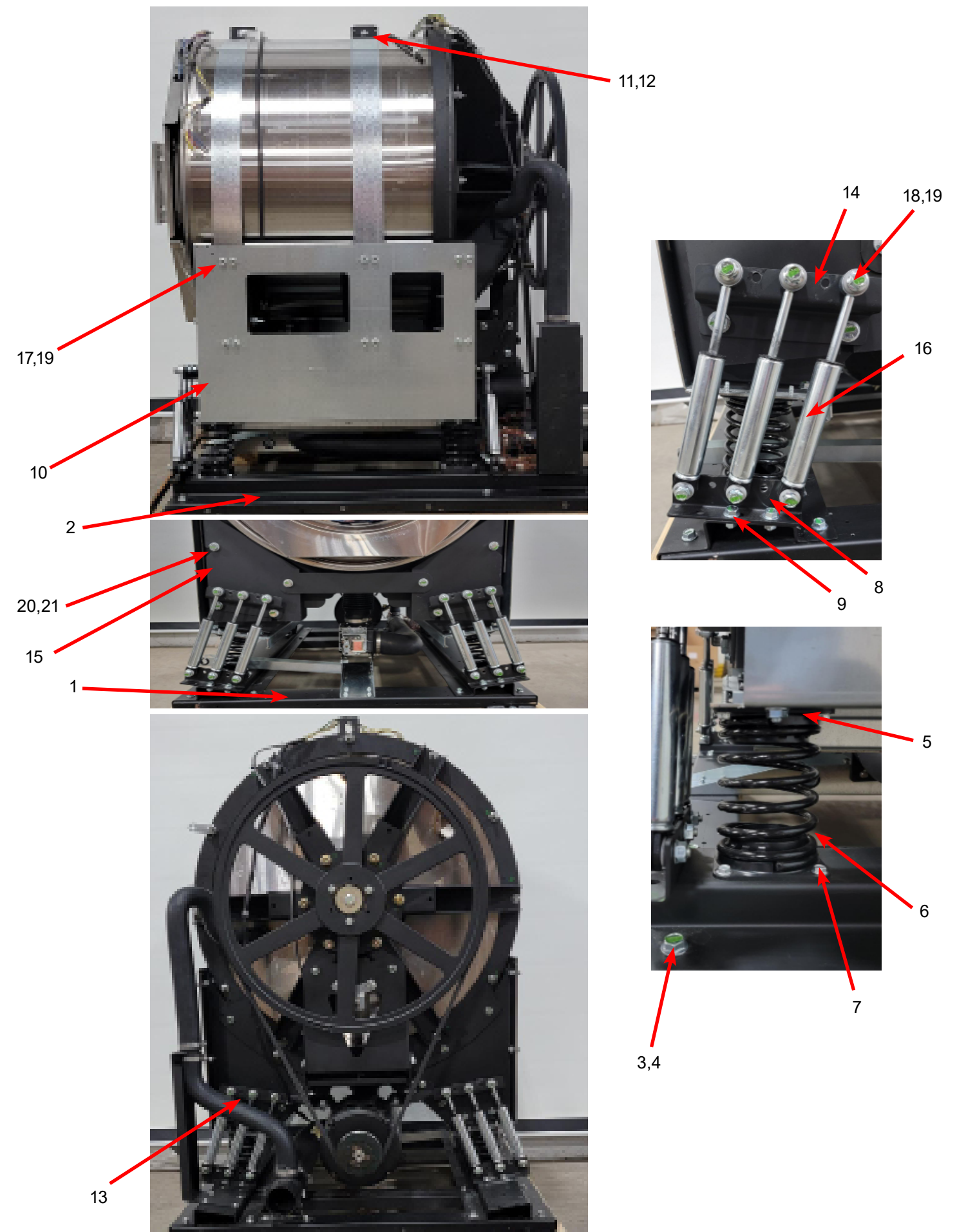


Key	Description	S-675	S-975	Qty
31	Injection assy	9883-017-001	9883-016-001	1
32	Bracket-Injector Assy	9029-352-001	9029-346-001	1
*	Screw, 10Bx1/2	9545-008-026	9545-008-026	4

Cradle & Base Parts Group

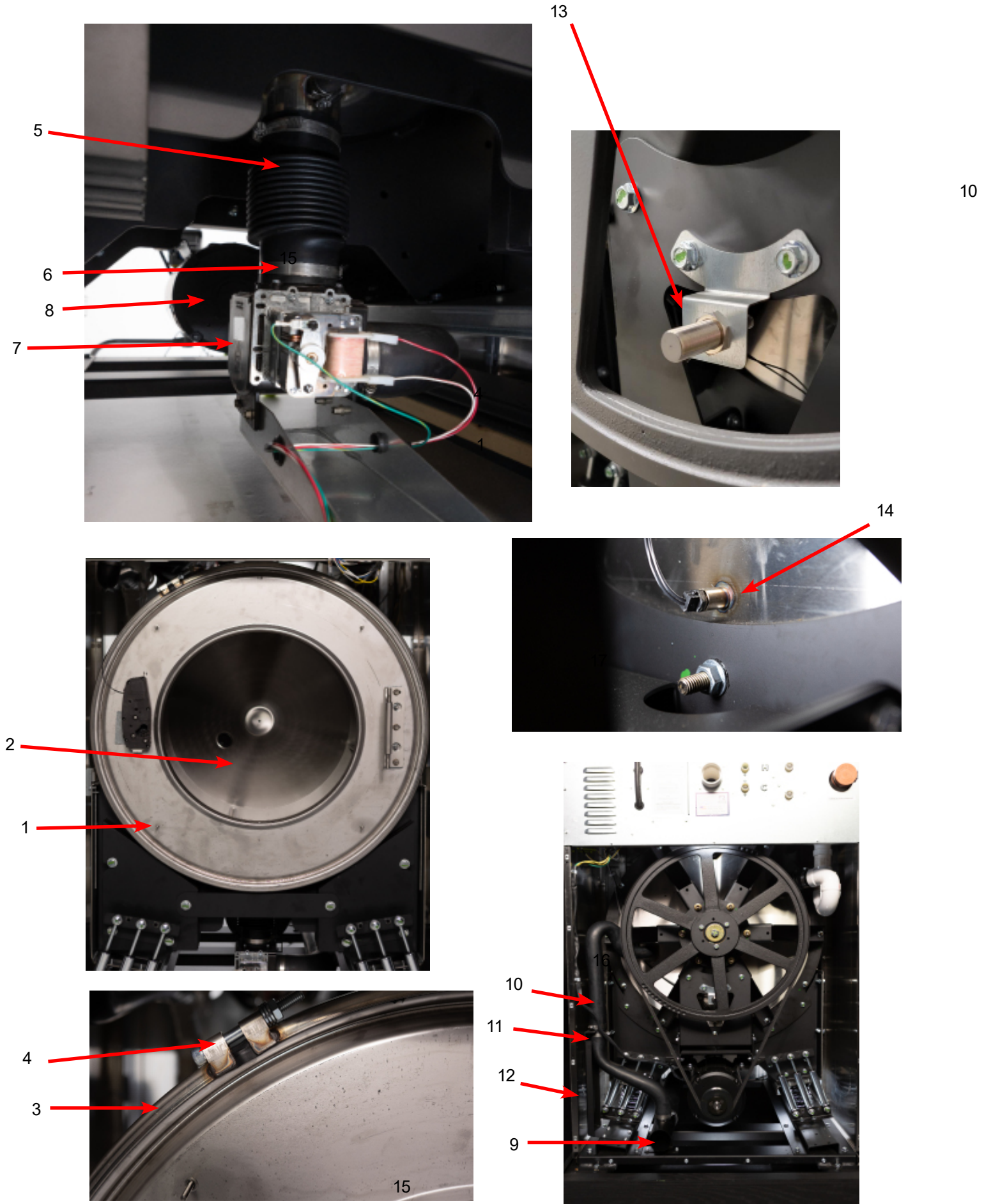
Key	Description	S-675	S-975	Qty
*	Cradle Assembly	9967-011-001	9967-010-001	1
*	Base Assembly	9945-161-001	9945-160-001	1
*	Leveling Shim	9552-052-001	9552-052-001	AR
*	Channel Assembly-Base, Front/Rear	9947-060-002	9947-057-002	2
1	Channel-Base, Front/Rear	9081-211-001	9081-201-001	2
*	Plate-Base, Foot	9452-859-001	9452-859-001	4
*	Channel-Base, Middle	9081-212-002	9081-202-002	1
2	Channel Assembly-Base (RH/LH)	9947-061-001	9947-056-001	2
*	Nut-Rivet, SS, Hex,1/4-20	8640-438-001	8640-438-001	8
3	Screw-3/8-16x3/4	9545-029-015	9545-029-015	20
4	Nut-Hex 3/8-16	8640-415-004	8640-415-004	20
*	Pad-Spring Rightwind	9455-067-001	9455-067-001	4
*	Spring-Compress, Right (Gray)	9534-368-001	9534-368-001	2
5	Pad-Spring Leftwind	9455-067-002	9455-067-002	4
6	Spring-Compress, Left (Black)	9534-368-002	9534-368-002	2
*	Spring Replacement Kit	9732-364-001	9732-364-001	
7	Screw-1/4Bx3/4	9545-030-002		16
7	Screw-1/4Bx3/4		9545-030-002	8
*	Plate-Spacer, Spring		9452-860-002	2
8	Bracket-Damper, Base	9029-337-002	9029-337-002	4
9	Screw-1/4Bx1 1/4		9545-030-003	8
10	Cradle-Side, Right	9085-010-001	9085-009-001	1
*	Cradle-Side, Left	9085-010-002	9085-009-002	1
*	Support Assembly-Front Cradle	9991-079-002	9991-077-002	2
*	Support-Front/Middle Cradle	9548-295-001	9548-293-001	2
*	Pad-Tub Cradle	9455-070-001	9455-069-001	2
*	Support-Rear Cradle	9548-296-002	9548-294-002	1
11	Clamp Assembly-Tub Band, Male	9938-042-001	9938-041-001	2
12	Clamp Assembly-Tub Band, Female	9938-042-002	9938-041-002	2
13	Bracket-Damper, Rear Cradle	9029-355-002	9029-338-002	2
14	Bracket-Damper, Front Cradle	9029-356-002	9029-339-002	2
15	Plate-Counter Weight	9452-863-002	9452-861-002	10
*	Brace-Counter Weight	9046-103-002	9046-100-002	1
16	Damper	9125-010-001		6
16	Damper		9125-010-001	12
*	Damper Replacement Kit	9732-363-002	9732-363-001	
17	Screw-3/8-16x3/4	9545-029-015	9545-029-015	48
18	Screw-3/8-16x1 1/2	9545-029-016		16
18	Screw-3/8-16x1 1/2		9545-029-016	24
19	Nut-3/8-16	8640-415-004		64
19	Nut-3/8-16		8640-415-004	72
*	Screw-1/4Bx3/4	9545-030-002	9545-030-002	16
*	Washer, Interlocking 1/2	8641-591-001	8641-591-001	16
20	Bolt-1/2-13x6 1/2	9545-017-020	9545-017-020	8
21	Nut-Hex 1/2-13	8640-417-002	8640-417-002	8

NOTE: Interlocking Washers are ONE-time use.



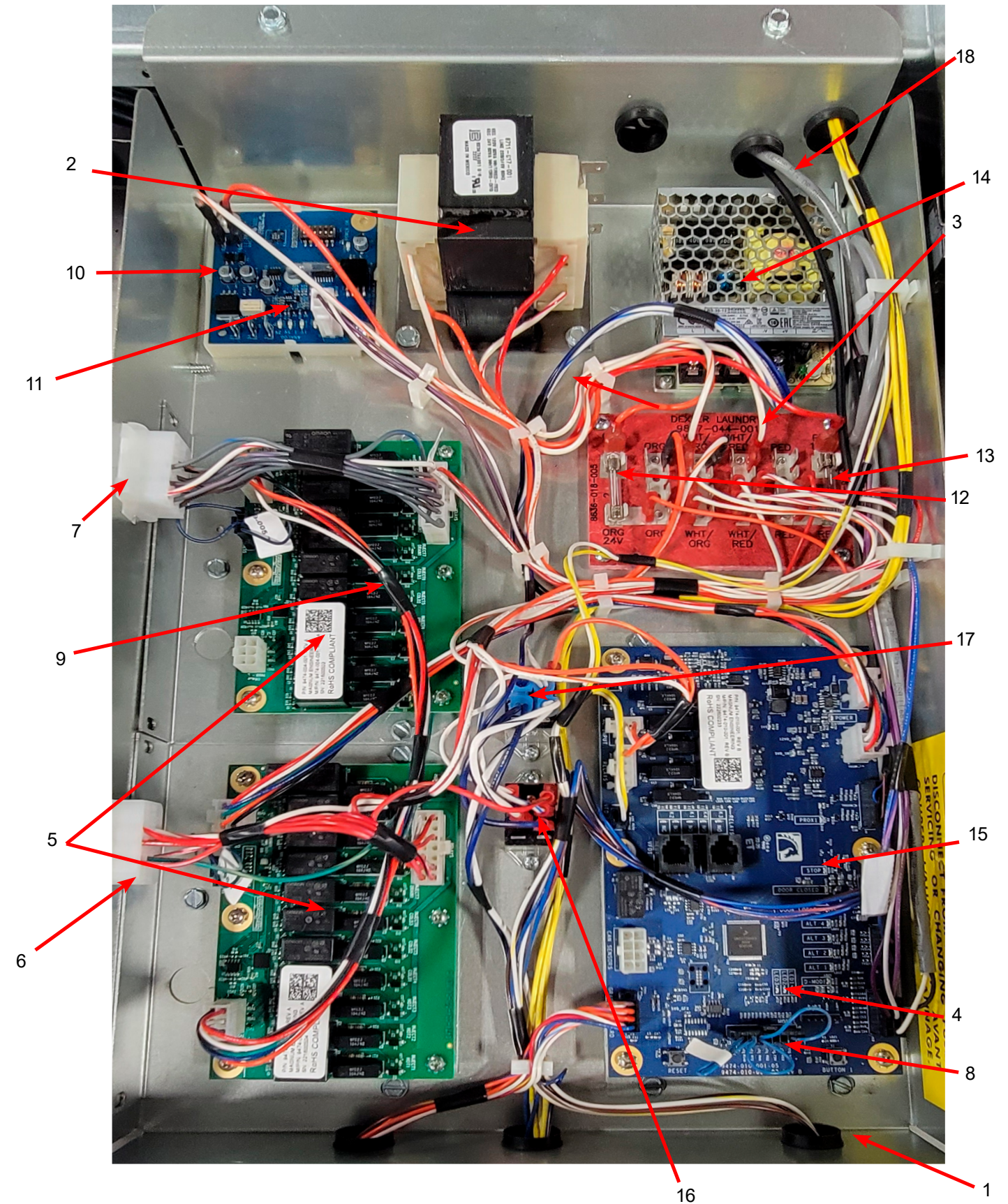
Chassis and Drain Parts Group

Key	Description	S-675	S-975	Qty
1	Outer Tub Assy.	9930-189-001	9930-188-001	1
2	Tub & Cylinder Assy.	9869-048-001	9989-047-001	1
*	Tub Front	9974-024-001	9974-022-001	1
*	Gasket, Tub Front	9206-421-004	9206-421-002	1
3	Ring Assy, Tub Mtg-Front Clamp	9950-063-001	9950-055-001	1
4	Bolt, Top Front Ring 3/8"-16 x 3"	9545-029-009	9545-029-009	1
*	Nut 3/8"-16	8640-415-001	8640-415-001	1
*	Lockwasher-Spring 3/8	8641-582-003	8641-582-003	1
5	Hose, Tub to Drain Valve	9242-469-001	9242-469-001	1
6	Clamp, Hose (Tub to Drain Valve)	8654-117-014	8654-117-014	2
7	Valve, Drain	9379-204-001	9379-204-001	1
*	Screw, Valve to Bracket 1/4-20x1/2	9545-018-013	9545-018-013	4
8	Hose, Drain Valve to Tube	9242-476-001	9242-470-001	1
*	Clamp, Hose (Drain Valve to Tube)	8654-117-014	8654-117-014	2
9	Tube Assy, Drain	9915-134-002	9915-134-002	1
*	Bracket, Drain Tube	9029-347-001	9029-347-001	1
*	Screw Tube (Bracket to Base 1/4Bx3/4)	9545-030-002	9545-030-002	2
10	Hose-Overflow Upper	9242-477-001	9242-471-001	1
11	Tube Assy-Overflow	9915-136-002	9915-136-002	1
12	Hose-Overflow Lower	9242-475-001	9242-475-001	1
*	Clamp-Hose Over Flow	8654-117-014	8654-117-014	4
*	Bracket-Overflow Hose	9029-351-001	9029-351-001	1
*	Hose, Pressure switch	9574-175-009	9242-175-009	1
*	Clamp, Hose	8654-117-015	8654-117-015	1
*	Bracket-switch,prox	9029-308-001	9029-375-001	1
*	Washer-flat	8641-581-032	8641-581-043	1
*	Screw-hxcap,5/8-11x1 1/2	9545-060-001	9545-060-001	1
13	Switch-prox,18mm,shld,60"	9539-498-001	9539-498-001	1
14	Sensorassembly-thermist,10k	9501-005-002	9501-005-002	1
*	Sealer-pipe	8538-132-001	8538-132-000	AR



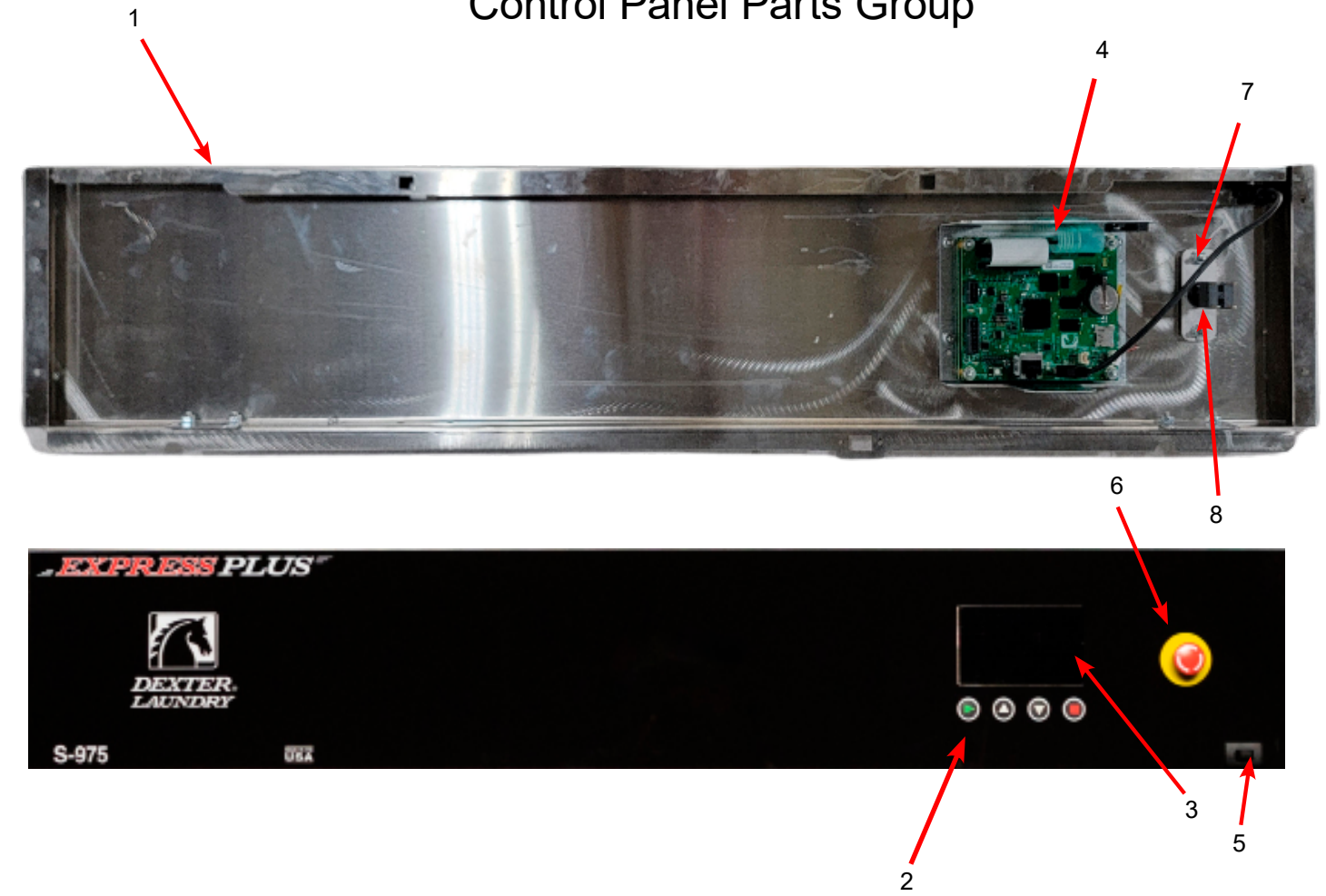
Electrical Components - Top Compartment

Key	Description	S-675	S-975	Qty
*	Contrlrassy-trgh, opl,60hz	9857-280-001	9857-279-001	1
1	Troughassy-control	9575-044-001	9575-044-001	1
2	Transformer-dualsecondary	8711-017-001	8711-017-001	1
*	Screw-hxwshrhnduct,#10bx1/2	9545-008-026	9545-008-026	4
*	Lockwasher #10	8641-582-006	8641-582-006	4
3	Terminalblockassembly-power	9897-044-001	9897-044-001	1
*	Screw-panhdcr,#8abx1/2	9545-045-012	9545-045-012	4
*	Wiringharness-ctrl,graph,can,wshr	9627-922-002	9627-922-002	1
4	Pcbassy-maincontrol	9799-029-001	9799-029-001	1
5	Pcbassy-relay	9799-028-001	9799-028-001	2
*	Screw-hxwshrhnduct,#10bx1/2	9545-008-026	9545-008-026	10
6	Wiringharness-main	9628-010-001	9628-010-001	1
7	Wiringharness-chemical,v2.0wshr	9627-927-001	9627-927-001	1
8	Wireasy,2.0, Model Jumper	8220-158-034	8220-158-035	1
*	Wiringharness-drsw/vfd,stp	9627-928-004	9627-928-004	1
*	Clamp-cable,3/16"	8654-125-005	8654-125-005	4
9	Wiringharness-cntrl/relay,v2.0	9627-921-001	9627-921-001	2
*	Wireasy-jumper,v2.0,relaypcb	8220-159-005	8220-159-005	1
*	Wireasy-jumper,v2.0,relaypcb	8220-159-006	8220-159-006	1
*	Screw-hxwshrhds1,10-32tx1/2 grn	9545-008-027	9545-008-027	1
*	Lockwasher #10	8641-582-006	8641-582-006	1
*	Standoff-twistlok	9527-007-001	9527-007-001	10
10	Sensorassy-wps	9474-007-001	9474-007-001	1
*	Support-pcb,3/8",edge Holding	9548-292-001	9548-292-001	1
11	Wiringharness-wps/thermo	9628-017-001	9628-017-001	1
*	Wireasy-org 17"	8220-062-052	8220-062-052	1
*	Wireasy-wht/org,17 1/2"	8220-062-053	8220-062-053	1
12	Fuse-2a,slow,1/4x1-1/4 (on the 24V)	8636-018-005	8636-018-005	1
13	Fuse-1.5a,fast,1/4x1-1/4 (on the 120V)	8636-018-001	8636-018-001	1
14	Wiring harness-powersupply,12v	9628-012-001	9628-012-001	1
*	Wiringharness-drkrelay	9628-013-001	9628-013-001	1
15	Wiringharness-rebal, input	9628-014-001	9628-014-001	1
*	Wiringharness-maxdispsto	9628-015-001	9628-015-001	1
*	Channel-trough, front	9081-215-001	9081-206-001	1
*	Channel-trough, rear	9081-216-001	9081-208-001	1
*	Channel-trough, front to back	9081-207-001	9081-207-001	1
16	24v Relay	5192-285-004	5192-285-004	1
17	120v Relay	5192-285-001	5192-285-001	1
18	Data Cable	9806-023-005	9806-023-005	1
*	Wiringharness-15 pin, noinj	9628-011-001	9628-011-001	1



Key	Description	S-675	S-975	Qty
1	Panel Control Assembly(panel only)	9444-085-001	9444-078-001	1
*	Plate -Latch, Top	9452-625-001	9452-625-001	2
*	Nut Hexkeps #8-32	8640-412-005	8640-412-005	4
*	Screw-FillHDCR 10Bx9/16	9545-008-023	9545-008-023	1
2	Button-control,2.0,opl	9035-063-001	9035-063-001	1
3	Window-display,lcd(w/gasket)	9635-021-002	9635-021-002	1
4	Contrlassy-display,2.0,opl,wsh	9857-230-003	9857-230-003	1
*	Nut-hexkeps,#6-32	8640-411-003	8640-411-003	4
5	Cableassy-usb,snapi	9806-024-001	9806-024-001	1
6	Button-emergencystop,w/latch	9035-061-002	9035-061-002	1
*	Spacer-pcb,#8x1/8	9538-157-005	9538-157-005	2
7	Plate-mounting,stopbutton	9452-725-001	9452-725-001	1
*	Nut-hexkeps,#8-32	8640-412-005	8640-412-005	2
8	Switch-contactblock,dpst,nc	9539-499-001	9539-499-001	1
*	Nameplate,Control Panel (one piece) Black	9412-263-001	9412-262-001	1
*	Screw, #10B x 1/2	9545-008-026	9545-008-026	6

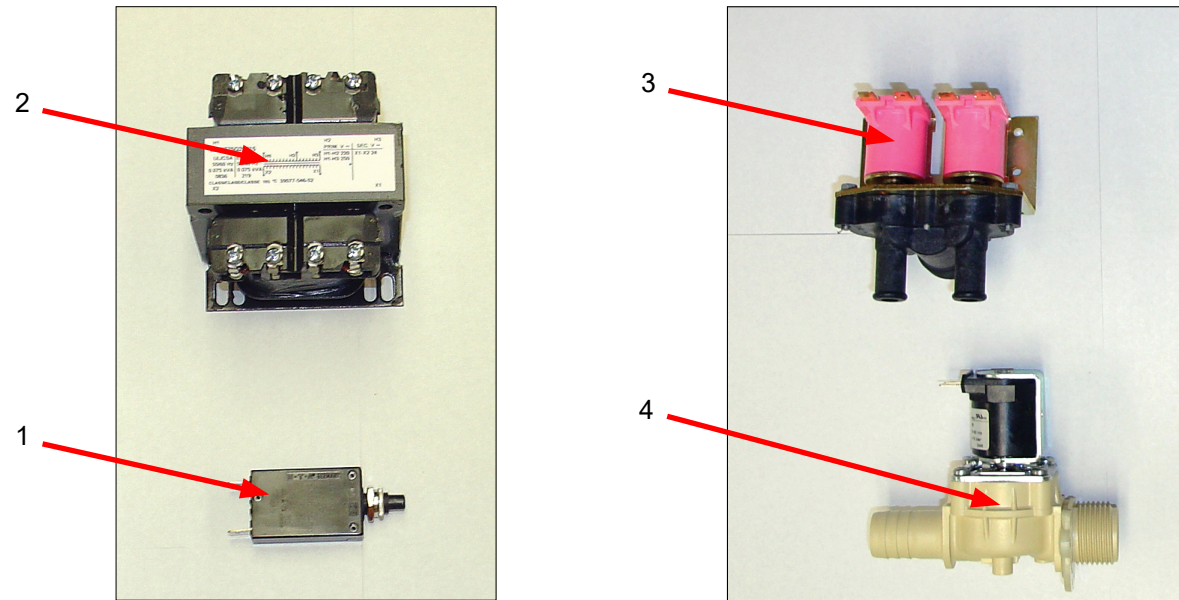
Control Panel Parts Group



Soft Mount O-Series -39 Models

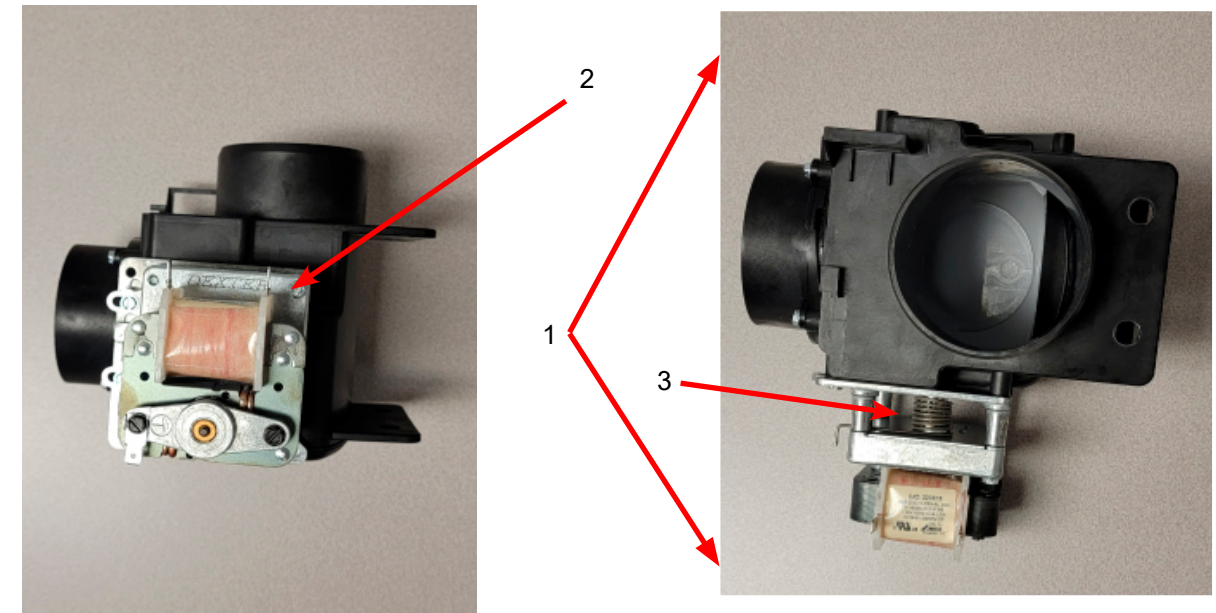
WS0675XA-39XO 230 Volts 50 Hz Single Phase
 WS0975XA-39XO 230 Volts 50 Hz Single Phase

Key	Description	S-675	S-975	QTY
1	Circuit breaker	5198-211-002	5198-211-002	1
*	Instructions, Transformer Control	8507-449-002	8507-449-002	1
*	Operators Manual	8514-305-001	8514-305-001	1
2	Control Transformer, 200/250-24V 50Hz	8711-004-004	8711-004-004	1
3	Water Valve	9379-183-013	9379-183-013	2
4	Water Valve, Single	9379-194-003	9379-194-003	2
*	Input Power Terminal Block Assembly	9897-045-002	9897-045-002	1
*	Wiring Label, Schematic	9508-094-001	9508-094-001	1
*	Rear Channel Assembly	9947-063-002	9947-059-002	1
*	Wiring Harness, Power Terminal Block	9628-001-003	9628-001-003	1
*	Wiring Harness, Main	9628-026-001	9628-026-001	1
*	Wiring Harness, Injection	9628-003-001	9628-003-001	1
*	Wiring Harness, 15-pin non inj.	9628-027-001	9628-027-001	1
*	Control Trough Only	9857-280-002	9857-279-002	1

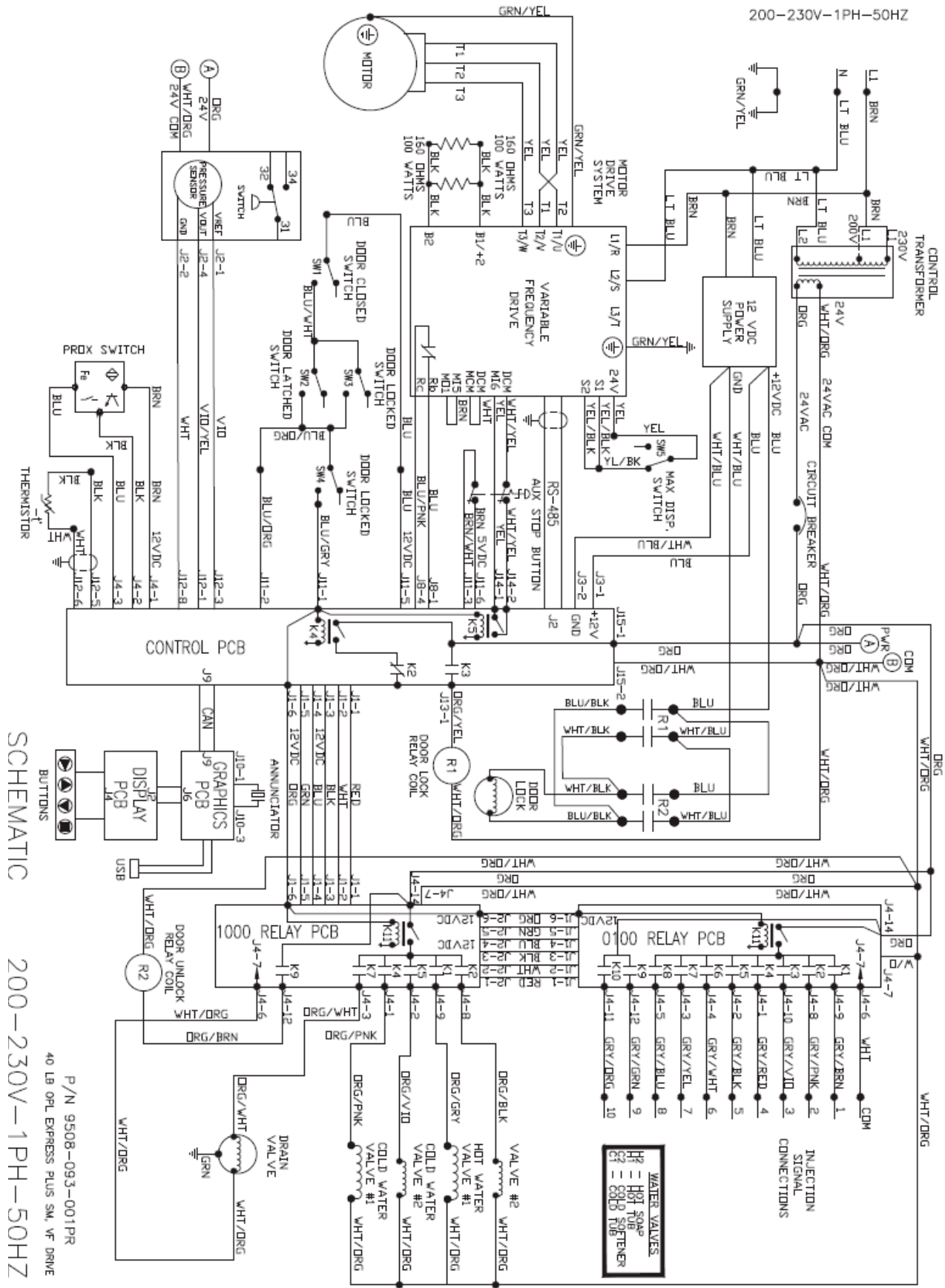


Drain Valve Parts Group

Key	Description	Part Number	Qty
1	Valve, Drain (includes #2 thru #11)	9379-204-002	1
2	Motor & Gear Train Assy 115v	9914-137-022	1
3	Spring, Drive	9534-339-001	1
*	Seal, V Packer	9532-134-001	1
*	Pin, Main Drive	9451-196-001	1
*	Kit - Seal Replacement	9732-327-001	1

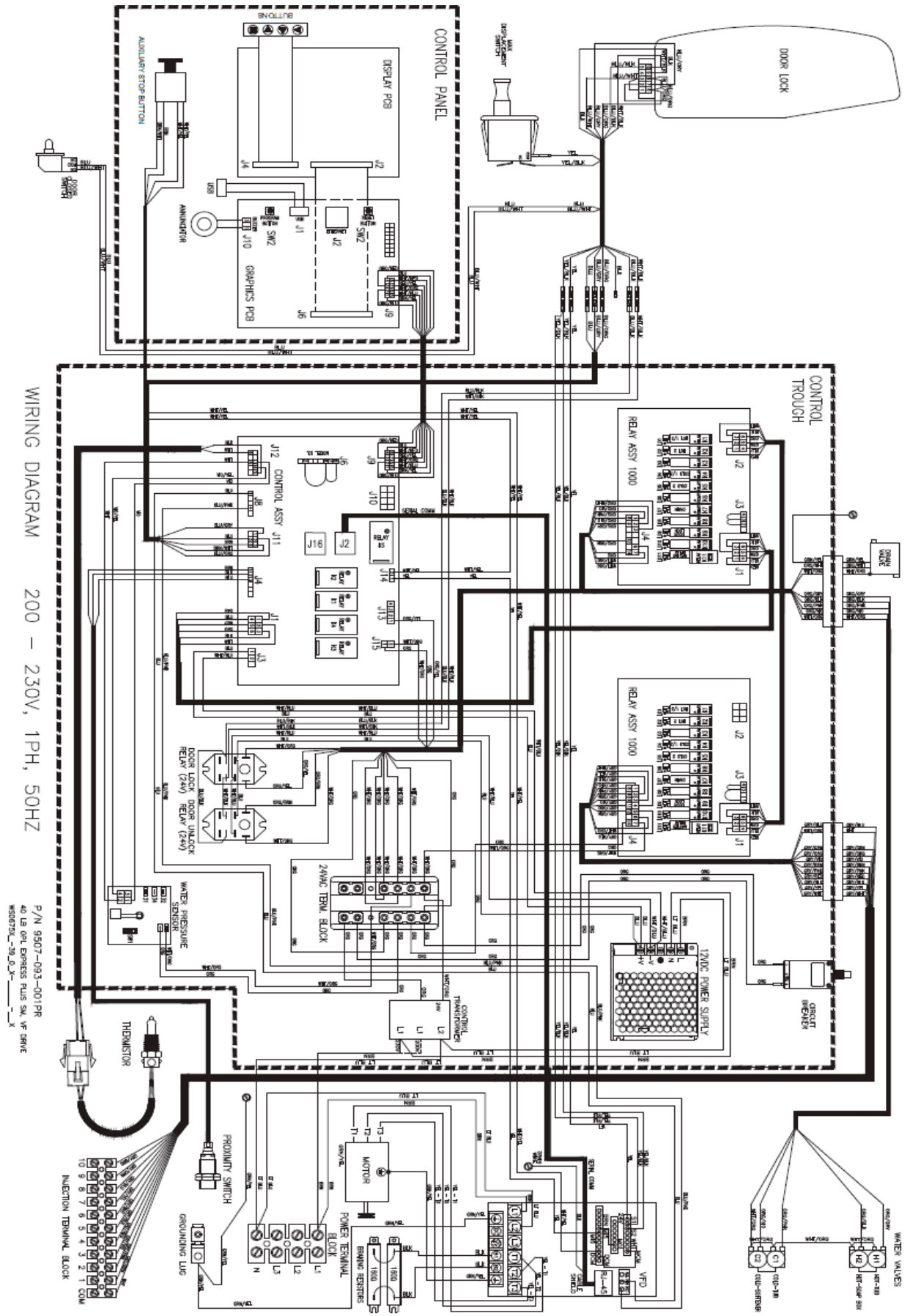


WS0675XB-39EO Schematic



SCHEMATIC 200-230V-1PH-50HZ
 P/N 9508-093-001PR
 40 LB OPL EXPRESS PLUS SM, VF DRIVE

WS0675XB-39EO Diagram



WIRING DIAGRAM 200 - 230V, 1PH, 50HZ
 P/N 9507-093-001PR
 40 LB OPL EXPRESS PLUS SM, VF DRIVE
 #80879L-29,0,3X-1-X

