



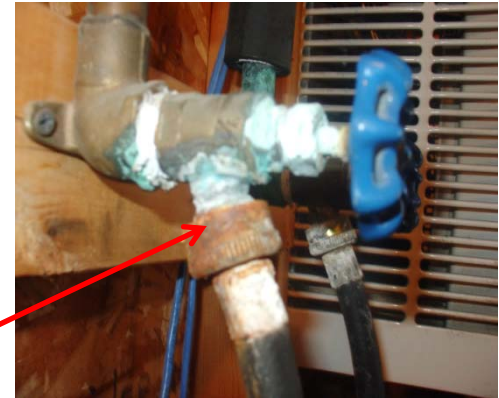
DEXTER
LAUNDRY

Cleaning Water Inlet Hoses & Screens

Step 1 – Shut off BOTH water supplies.

Step 2 – Remove and inspect hoses.

- Check to make sure both water supply lines are shut off before removing hoses.
- Remove supply hoses from inlets on machine.
- Remove supply hoses from shut off valves.
- Inspect hoses for buildup, blockages, corrosion, leaks, etc.
- Replace damaged hoses.



Step 3 – Inspect and clean inlet screens.

- Inspect inlet screens for buildup or corrosion.
- If buildup is present clean the screen with small brush.
- If Corrosion or damaged screens are present, replace the inlet screens.
- Reinstall supply lines, turn on water supplies and check for leaking connections.

