



DEXTER[®]
LAUNDRY

**USE THE BLUE TABS LOCATED ON THE
RIGHT AND LEFT SIDES OF THE FOLLOWING
DOCUMENT TO ADVANCE TO EACH SECTION.**

C-Series Accessories

WC0350XB-12EC4X 208-240 volts 60hz. Single Phase or Three Phase

WC0450XB-12EC4X 208-240 volts 60hz. Single Phase or Three Phase

| Key | Description | T-350 | T-450 | QTY |
|-----|---|--------------|--------------|-----|
| * | Kit, Door Gasket Expander (large) | 9732-139-002 | 9732-139-002 | |
| * | Kit, Door Gasket Expander (small) | 9732-139-001 | 9732-139-001 | |
| * | Hose, Water Supply 3/8" I.D. x 48" | 9990-027-011 | 9990-027-011 | 2 |
| * | Washer, Inlet Hose (furnished) | 8641-242-000 | 8641-242-000 | 2 |
| * | Strainer, Inlet Hose (furnished) | 9565-003-001 | 9565-003-001 | 2 |
| * | Bevel Washer for 5/8" bolt used in installations using angle iron bases | 8641-586-002 | 8641-586-002 | |
| * | Bevel Washer for 3/4" bolt used in installations using angle iron bases | 8641-586-003 | 8641-586-003 | |
| * | Sealing compound | 8538-151-001 | 8538-151-001 | |
| * | TORX#20 | 8545-051-002 | 8545-051-002 | |
| * | Flow Restrictors (in dispenser) | 9475-002-002 | 9475-002-002 | 2 |
| * | Battery (used on Control PCB) | 8612-001-001 | 8612-001-001 | |
| * | Coin Bearing & Seal Kit | 9732-219-008 | 9732-219-005 | |
| * | Coin Box Assy, Blue Large | 9807-099-002 | 9807-099-002 | 1 |
| | Coin Box Assy, Black Large | 9807-099-004 | 9807-099-004 | 1 |
| | USB, Thumb Drive (Blank) | 9150-045-001 | 9150-045-001 | 1 |
| | USB, Thumb Drive, W/File | 9150-045-002 | 9150-045-002 | 1 |
| * | Mode Light Backing Window | 9635-022-001 | 9635-022-001 | 1 |

Kits, Assemblies, & Common Parts

| Coin Acceptor Components | Part Number |
|--|--------------|
| Optical Coin Acceptor | 9021-092-002 |
| Optical Coin Switch Replacement | 9801-099-001 |
| Coin Drop Screws | 9545-053-002 |
| Retainer, Coin Acceptor | 9486-149-001 |
| Loading Door & Door Lock Components | Part Number |
| Door Glass Gasket (Standard Door) | 9206-419-001 |
| Door Glass Gasket (Small Door) | 9206-411-002 |
| Door Handle Only (Large) | 9244-091-001 |
| Door Close Switch | 9539-492-001 |
| Door Lock Gear Motor Assembly | 9892-015-001 |
| Kit - Door Latching Assy. & Cam (replaces original Door Latching Assembly) | 9732-347-001 |
| Kit - Door Cam Replacement | 9732-346-002 |
| Kit - Locking Pawl Replacement | 9732-346-001 |
| Kit - Door Gasket Expander Kit (Small) | 9732-139-001 |
| Kit - Door Gasket Expander Kit (Large) | 9732-139-002 |
| Electrical Components | Part Number |
| Transformer, Main | 8711-004-001 |
| Transformer, Control | 8711-009-004 |
| Main Control Board | 9473-010-001 |
| Kit-Replacement, Pressure Sensor (Only) | 9732-315-001 |
| VFD & Breaking Resistors Components | Part Number |
| Breaking Resistor 200 Ohms | 9483-004-002 |
| Breaking Resistor 160 Ohms | 9483-004-003 |
| Delta E Drive Display | 9150-044-001 |
| MS 300 VFD Display | 9150-058-001 |
| Data Cable (56") | 9806-015-003 |
| Drain & Water Valve Components | Part Number |
| Kit - 3" Drain Valve Seal Replacement | 9732-327-001 |
| Drain Valve 3" | 9379-202-001 |
| Drain Valve 2" | 9379-199-001 |
| Water Valve (Dual) | 9379-183-012 |
| Diaphragm (Dual) | 9118-049-003 |
| Cabinet Components | Part Number |
| Front Panel Screw | 9545-008-014 |
| Front Panel Finisher Washer | 8641-585-001 |
| Front Panel Spring Nut | 8640-399-008 |
| Top Soap Box Screw (Regular Chassis Only) | 9545-008-012 |
| Top Soap Box Spring Nut (Regular Chassis Only) | 8640-399-007 |
| 5/16 Hex Screw, Common | 9545-008-026 |
| Top Lock Key #6324 | 9306-025-001 |
| Cylinder Plug (1.5" Plastic) | 9456-041-007 |



Section 8:

Parts Data
C-Series Vended
Regular Chassis

WC0350XA-12EC4X
WC0450XA-12EC4X

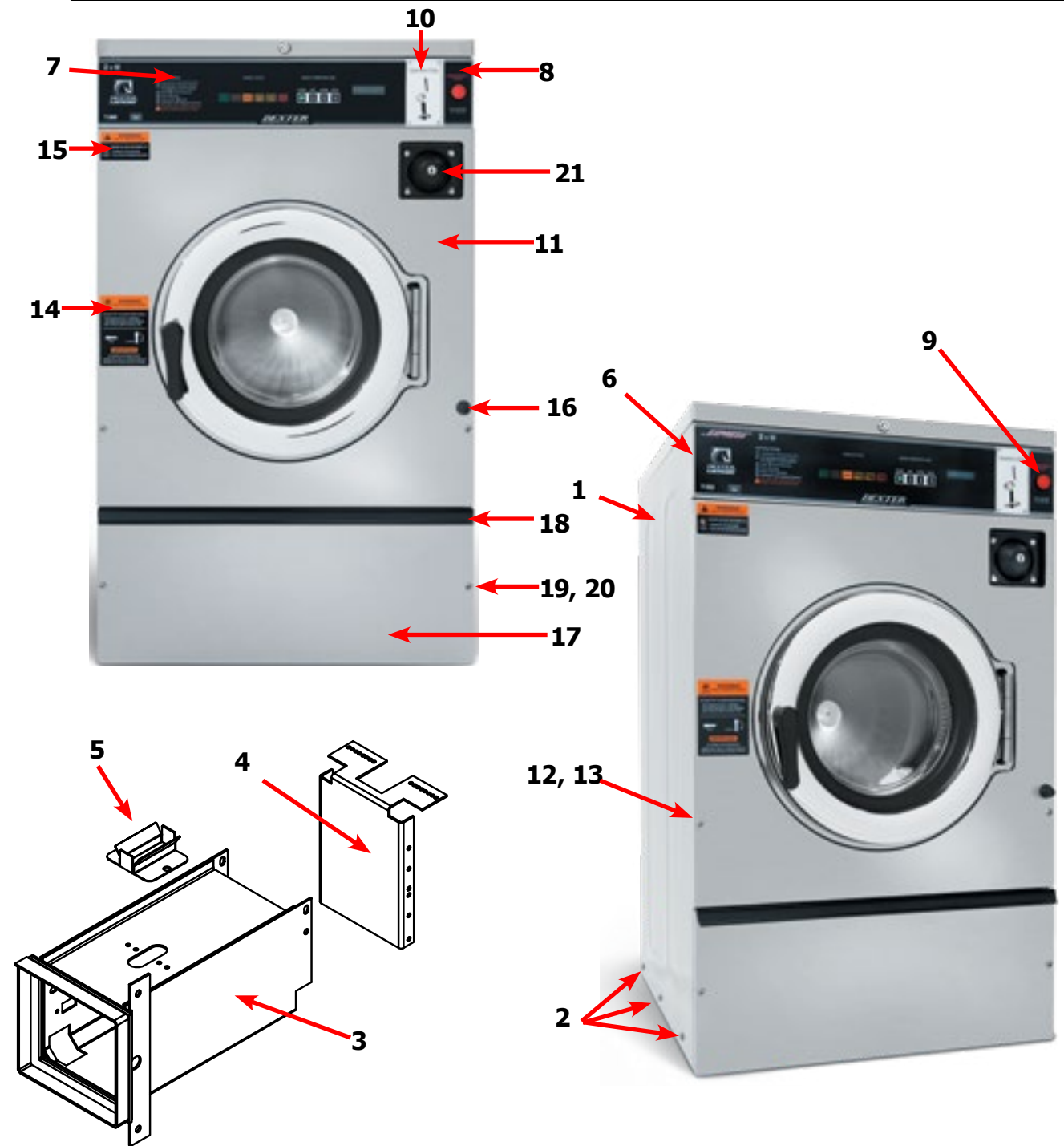
After Serial # W1.19225.020
After Serial # W1.19213.001

Wiring Harness Part # by Model

| Key | Description | T350 | T450 | QTY |
|--|--|--------------|--------------|-----|
| Control Panel Wiring Harnesses | | | | |
| * | Wiring Harness, Door Lock | 9627-791-003 | 9627-791-003 | 1 |
| * | Wiring Harness, Drain/Thermo/DoorSol | 9627-796-001 | 9627-796-001 | 1 |
| * | Wiring Harness, Relay Board to Control Board (P20/P21) | 9627-793-001 | 9627-793-001 | 1 |
| * | Wiring Harness LED PCB Board to Control Board | 9627-797-001 | 9627-797-001 | 1 |
| Control Trough Wiring Harnesses | | | | |
| * | Wiring Harness, Control Board to Relay Board (P8/P16) | 9627-794-001 | 9627-794-001 | 1 |
| * | Wiring Harness, Water Valve to Relay Board (P19) | 9627-795-003 | 9627-795-003 | 1 |
| * | Harness, Control Board (P5) to Pressure Switch | 9627-908-003 | 9627-908-005 | 1 |
| * | Wiring Assembly, Fuse (Red 7") | 9631-381-001 | 9631-381-001 | 3 |
| * | Wiring Assembly, Terminal Block to Control Transformer (Blk/Red) | 8220-001-230 | 8220-001-230 | 1 |
| * | Wiring Assembly, Terminal Block to Control Transformer (Blk/Blu) | 8220-001-231 | 8220-001-231 | 1 |
| * | Harness, Power Terminal Block | 9627-747-003 | 9627-747-003 | 1 |
| Rear Channel Wiring Harnesses | | | | |
| * | Wiring Assembly Jumper Yel (Water Valve) | 8220-123-001 | 8220-123-001 | 1 |
| * | Wiring Assembly, Relay Board to VFD (Yel. 32") | 8220-064-023 | 8220-064-023 | 2 |
| * | Data Communication Cable | 9806-015-001 | 9806-015-001 | 1 |

Cabinet and Front Panel Group Part # by Model

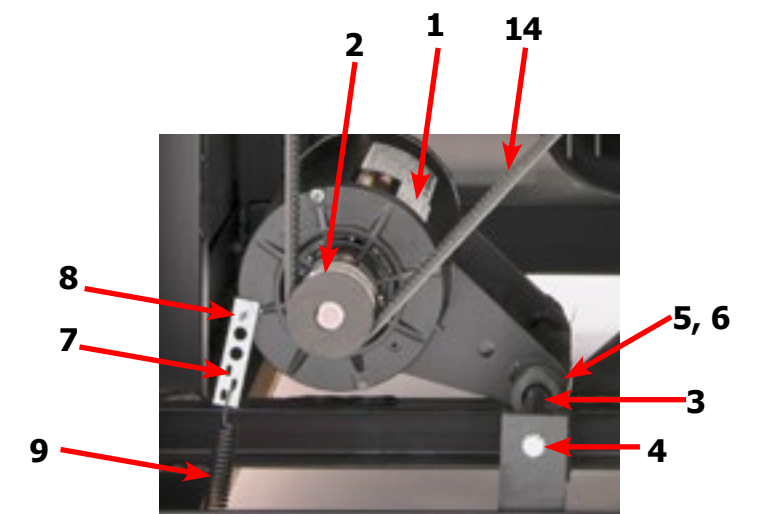
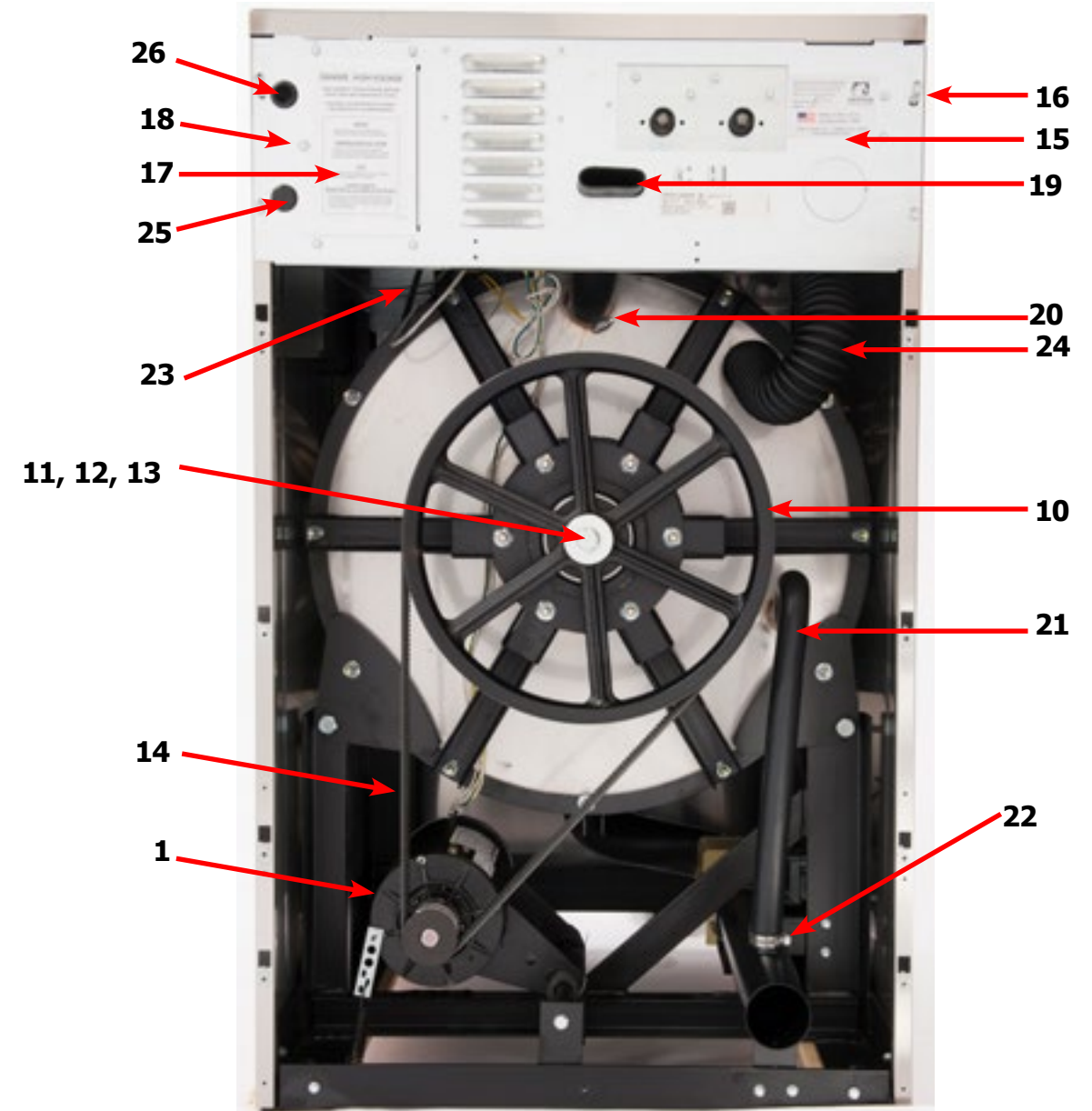
| Key | Description | T-350 | T-450 | QTY |
|-----|---|--------------|--------------|-----|
| Key | Description | T350 | T450 | QTY |
| 1 | Panel, Side (Left or Right) - stainless | | 9732-359-007 | 2 |
| 1 | Panel, Right Side-stainless | 9989-640-001 | | 1 |
| 1 | Panel, Left Side - stainless | 9989-640-002 | | 1 |
| 2 | Screw, (Side Panel to Base) | 9545-018-018 | 9545-018-013 | 6 |
| * | Nut, Hex 1/4-20 UNC | 8640-414-006 | 8640-414-006 | 6 |
| * | Pad-Foam, Side Panel | 0904-904-001 | 0904-904-001 | 2 |
| 3 | Vault Assembly, Coin | 9942-040-002 | 9942-040-002 | 1 |
| 4 | Back-Coin Vault | 9050-066-001 | 9050-066-001 | 1 |
| * | Screw, #10B x 1/2 | 9545-008-026 | 9545-008-026 | 8 |
| 5 | Chute-Coin | 9119-032-001 | 9119-032-001 | 1 |
| * | Screw, 10B x 1/4 | 9545-008-001 | 9545-008-001 | 1 |
| * | Bracket, Side Panel under front panel | 9029-263-001 | 9029-263-001 | 1 |
| * | Nut, Hex (to tub front) | 8640-413-002 | 8640-413-002 | 2 |
| * | Screw, #10B x 1/2 | 9545-008-026 | 9545-008-026 | 2 |
| 6 | Panel, Control (Mounts Nameplate) | 9989-557-001 | 9989-558-001 | 1 |
| * | Screw, Control Panel to Sides | 9545-008-026 | 9545-008-026 | 4 |
| 7 | Nameplate Decal, Control Panel (Blue) | 9412-209-002 | 9412-211-002 | 1 |
| 7 | Nameplate Decal, Control Panel (Black) | 9412-209-001 | 9412-211-001 | 1 |
| 8 | Label-Nameplate, RH (Blue) | 8502-744-002 | | 1 |
| 8 | Label-Nameplate, RH (Black) | 8502-744-001 | | 1 |
| * | Stop Button Mounting Plate | 9452-725-001 | 9452-725-001 | 1 |
| 9 | Kit-Stop button with harness & Switch | 9732-223-001 | 9732-223-001 | 1 |
| 10 | Acceptor, Coin-Optical switch w/harness | 9021-092-002 | 9021-092-002 | 1 |
| * | Retainer-Dual coin Acceptor | 9486-149-001 | 9486-149-001 | 2 |
| * | Screws, Coin Acceptor | 9545-053-002 | 9545-053-002 | 4 |
| 11 | Panel Assy, Front | 9454-893-001 | 9454-894-001 | 1 |
| * | Trim Edge Protector | 9578-092-005 | 9578-092-005 | 1 |
| * | Screw, Hex- To Control Panel | 9545-008-026 | 9545-008-026 | 2 |
| * | Nut, Spring- To Control Panel 10/32 | 8640-442-001 | 8640-442-001 | 4 |
| 12 | Screw, Flat Head- Front to Sides | 9545-008-014 | 9545-008-014 | 2 |
| 13 | Washer, Finish | 8641-585-001 | 8641-585-001 | 2 |
| * | Nut, Spring-To Front Panel | 8640-442-001 | 8640-442-001 | 2 |
| 14 | Label, Door Opening-Blue | 8502-757-002 | 8502-757-002 | 1 |
| 14 | Label, Door Opening-Black | 8502-757-001 | 8502-757-001 | 1 |
| 15 | Label, Warning Risk of Injury-Blue | 8502-759-002 | 8502-759-002 | 1 |
| 15 | Label, Warning Risk of Injury-Black | 8502-759-001 | 8502-759-001 | 1 |



| Key | Description | T350 | T450 | QTY |
|-----|--|--------------|--------------|-----|
| 16 | Bumper-Loading door | 9051-055-001 | 9051-055-001 | 1 |
| * | Nut, 1/4-20 UNC, 2B | 8640-414-003 | 8640-414-003 | 1 |
| 17 | Door, Lower Service (includes handle & Rivits) | 9960-286-001 | 9960-286-002 | 1 |
| 18 | Handle (bumper guard) | 9244-086-001 | 9244-086-002 | 1 |
| * | Rivet | 9491-009-003 | 9491-009-003 | 4 |
| 19 | Screw Mtg., Flat Head | 9545-008-030 | 9545-008-030 | 2 |
| 20 | Washer, Finish | 8641-585-001 | 8641-585-001 | 2 |
| * | Nut, Spring | 8640-399-008 | 8640-399-008 | 2 |
| 21 | Coin Box Assy, Blue | 9807-099-002 | 9807-099-002 | 1 |
| 21 | Coin Box Assy, Black | 9807-099-004 | 9807-099-004 | 1 |

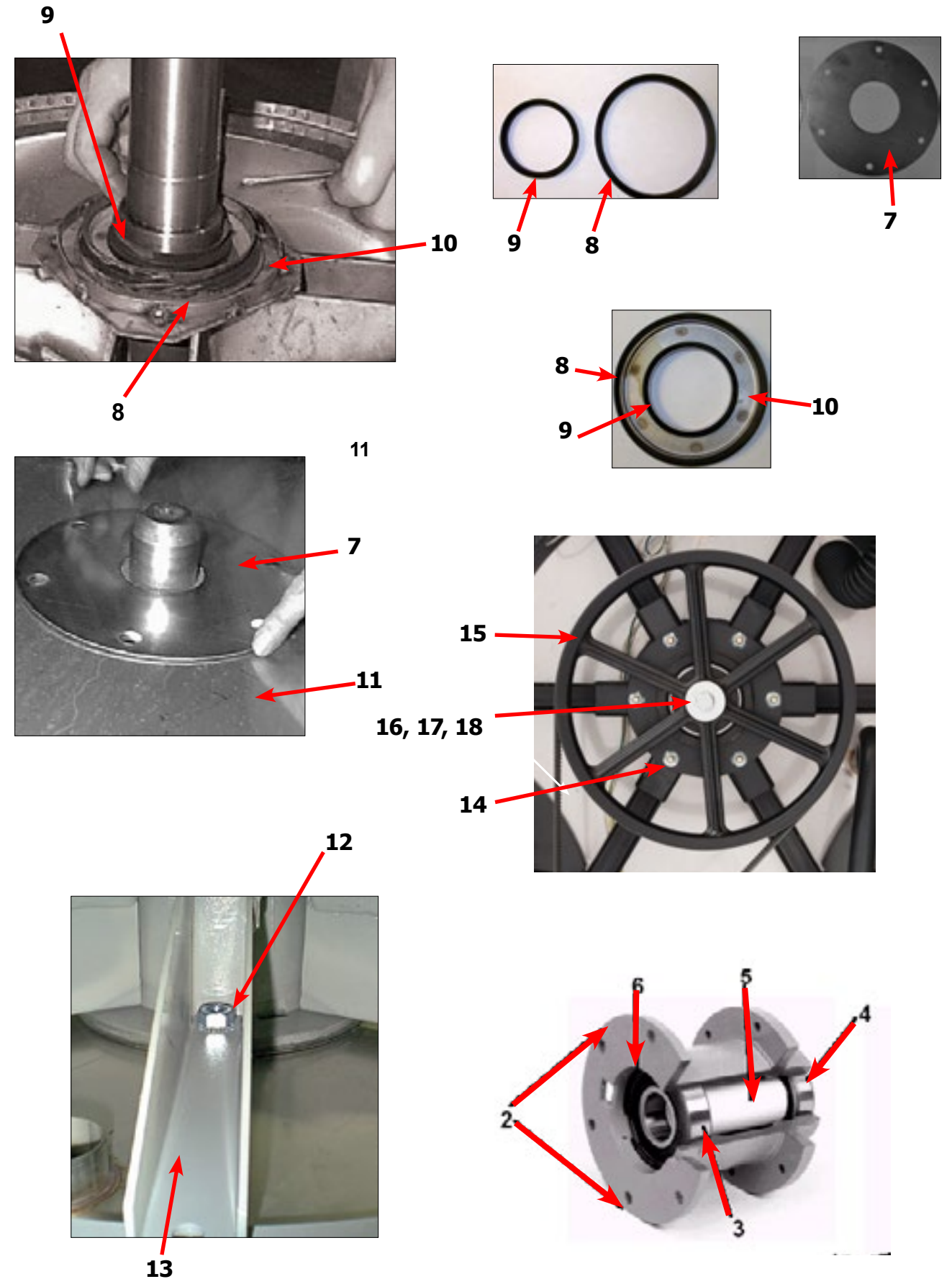
Rear View Access Part # by Model

| Key | Description | T350 | T450 | QTY |
|-----|--|--------------|--------------|-----|
| 1 | Drive Motor, 3 Phase (Inverter duty) | 9376-307-001 | 9376-319-001 | 1 |
| 2 | Pulley, Motor | 9453-180-001 | 9453-181-001 | 1 |
| * | Set Screw,Sq.Hd(motor pulley) | 9545-028-015 | 9545-028-015 | 2 |
| 3 | Rod, Motor Mtg | 9497-222-002 | 9497-222-002 | 1 |
| 4 | Screw (end of motor rod) | 9545-029-005 | 9545-029-005 | 1 |
| * | Lockwasher (end of motor rod) | 8641-582-014 | 8641-582-014 | 1 |
| 5 | Motor Bushing (Rubber) | 9053-082-001 | 9053-082-001 | 2 |
| 6 | Clamp-Worm, 316SS, 1.5" (for Rubber bushing) | 8654-117-019 | 8654-117-019 | 2 |
| 7 | Strap Bracket, Motor Tension | 9029-206-001 | 9029-206-002 | 1 |
| 8 | Nut, Strap to Motor 10/32 UNF | 8640-413-002 | 8640-413-002 | 1 |
| * | Washer #10 | 8641-581-006 | 8641-581-006 | 1 |
| 9 | Spring, Belt Tension | 9534-319-002 | 9534-319-002 | 1 |
| 10 | Pulley, Driven | 9453-168-005 | 9453-168-006 | 1 |
| * | Tolerance Ring driven pulley | 9487-234-001 | 9487-234-003 | 1 |
| 11 | Screw 1/2-13x1 1/4" | 9545-017-009 | | 1 |
| 11 | Screw 5/8-11x1/2" Driven pulley | | 9545-060-001 | 1 |
| 12 | Lockwasher 1/2" | 8641-582-016 | | 1 |
| 12 | Lockwasher 5/8" | | 8641-582-018 | 1 |
| 13 | Washer, Flat 1/2" | 8641-581-026 | | 1 |
| 13 | Washer, Flat 5/8x2 1/4" | | 8641-581-032 | 1 |
| 14 | Drive Belt | 9040-079-004 | 9040-079-005 | 1 |
| 15 | Channel, Rear | 9947-025-001 | 9947-026-001 | 1 |
| 16 | Screw Mtg rear channel | 9545-008-026 | 9545-008-026 | 4 |
| * | Nut, Spring Rear Channel MTG | 8640-399-008 | 8640-399-008 | 4 |
| 17 | Cover, Power Terminal Block | 9074-267-001 | 9074-267-001 | 1 |
| 18 | Screw, | 9545-008-026 | 9545-008-026 | 1 |
| 19 | Hose, Overflow Vent Top | 9242-463-002 | 9242-463-003 | 1 |
| 20 | Clamp, Hose Vent | 8654-117-008 | 8654-117-008 | 2 |
| 21 | Hose, Overflow to drain | 9242-449-002 | 9242-449-002 | 1 |
| 22 | Clamp, Hose overflow to drain | 8654-117-018 | 8654-117-018 | 2 |
| 23 | Hose, Pressure Switch | 9242-175-000 | 9242-175-007 | 1 |
| * | Clamp, Pressure Switch Hose | 8654-117-015 | 8654-117-015 | 1 |
| * | Vacuum Breaker Mtg Bracket | 9029-266-001 | 9029-077-001 | 1 |
| * | Vacuum Breaker ALL | 9610-001-001 | 9610-001-001 | 1 |
| * | Clamp, Hose to Vacuum Breaker | 8654-117-008 | 8654-117-014 | 1 |
| 24 | Hose, Vacuum Breaker to tub | 9242-458-001 | 9242-458-002 | 1 |
| 25 | Plastic Plug 7/8" Electrical Connection | 9456-041-006 | 9456-041-006 | 2 |
| 26 | Bushing, 7/8 | 9053-067-002 | 9053-067-002 | 1 |
| * | Panel Assy., Back | 9454-632-001 | | 1 |
| * | Panel Assy., Back, Upper | | 9444-014-001 | 1 |
| * | Panel Assy., Back, Lower | | 9444-013-001 | 1 |
| * | Screw Panel Mtg.#10Bx1/2" | 9545-008-026 | 9545-008-026 | 10 |
| * | Nut, Spring | 8640-399-004 | 8640-399-004 | 6 |
| * | Screw, To Base-1/4x3/4 | 9545-030-002 | 9545-030-002 | 3 |



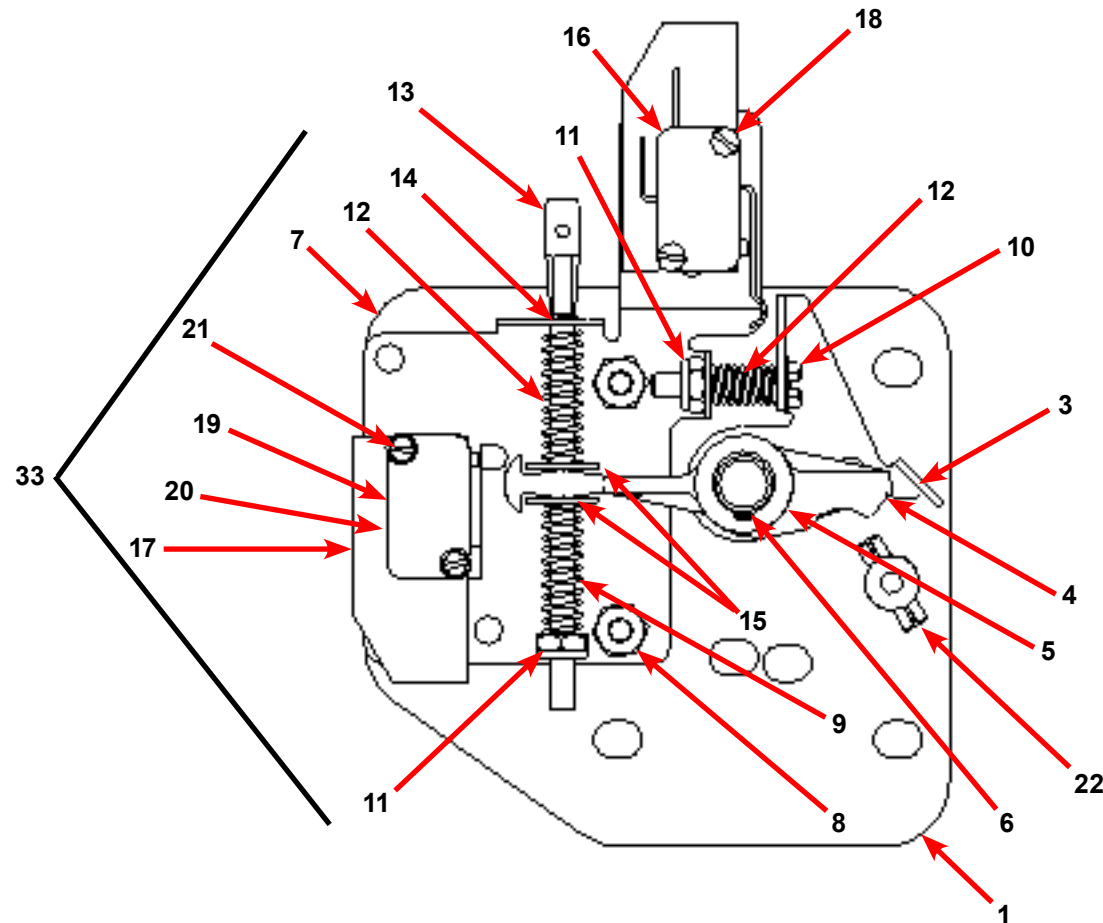
Cylinder, Seals & Bearings Part # by Model

| Key | Description | T350 | T450 | QTY |
|-----|--|--------------|--------------|-----|
| * | Bearings and Seal Kit | 9732-219-008 | 9732-219-005 | 1 |
| * | Housing, Bearing- Assembly (items #2-#6) | 9803-179-003 | 9803-186-001 | 1 |
| 2 | Housing, Bearing | 9241-169-002 | 9241-180-002 | 1 |
| 3 | Bearing, Front (LARGE) | 9036-159-009 | 9036-159-005 | 1 |
| 4 | Bearing, Rear (SMALL) | 9036-159-008 | 9036-159-004 | 1 |
| 5 | Spacer, Bearing | 9538-158-001 | 9538-167-001 | 1 |
| 6 | Ring, Bearing Retainer | 9487-238-001 | 9487-238-003 | 1 |
| 7 | Tub Back Mating Ring | 9487-261-002 | 9487-261-003 | 1 |
| 8 | Seal, Large | 9532-140-009 | 9532-140-009 | 1 |
| 9 | Seal, Small | 9532-140-003 | 9532-140-006 | 1 |
| 10 | Ring, Seal Mounting | 9950-042-001 | 9950-048-001 | 1 |
| 11 | Back Assy, Tub 2 piece | 9732-016-001 | 9962-013-002 | 1 |
| 12 | Bolt, Tub End of Bearing Housing (1/2" x 1 1/4") | 9545-017-009 | | 6 |
| 12 | Nut 1/2" | 8640-417-005 | | 6 |
| 12 | Flat washer 1/2" (ext. tooth) | 8641-581-034 | | 6 |
| 12 | Bolt 5/8-11x1 1/2" Tub end of bearing housing | | 9545-060-001 | 6 |
| 12 | Washer-Flat, 5/8" | | 8641-581-040 | 6 |
| 12 | Lockwasher 5/8" | | 8641-582-018 | 6 |
| 12 | Nut 5/8" | | 8640-425-001 | 6 |
| 13 | Support Arm Assy, Bearing Housing | 9991-057-002 | 9991-056-002 | 6 |
| * | Tub Alignment Spacer | 9552-038-003 | 9552-038-003 | |
| 14 | Bolt Pulley End of Bearing Housing (3/8" x 1 1/2") | 9545-029-003 | | 6 |
| 14 | Nut, Flange Locking 3/8" | 8640-415-004 | | 6 |
| 14 | Bolt Pulley end of bearing housing (7/16-14x2") | | 9545-059-002 | 6 |
| 14 | Nut, Flange Locking 7/16" | | 8640-416-005 | 6 |
| 15 | Pulley, Driven | 9453-168-005 | 9453-168-006 | 1 |
| * | Ring, Tolerance | 9487-234-001 | 9487-234-003 | 1 |
| 16 | Washer 1/2" | 8641-581-026 | | 1 |
| 16 | Washer 5/8" | | 8641-581-032 | 1 |
| 17 | Bolt 1/2-13 x 1 1/4" | 9545-017-009 | | 1 |
| 17 | Bolt 5/8-11x11/2" | | 9545-060-001 | 1 |
| 18 | Lockwasher 1/2" Ext. tooth | 8641-582-016 | | 1 |
| 18 | Lockwasher 5/8 Ext. tooth | | 8641-582-018 | 1 |
| * | Cylinder Assy Before Serial # W1.20190.XXX | 9732-354-002 | 9732-354-004 | 1 |
| * | Cylinder Assy After Serial # W1.20190.XXX | 9848-164-001 | 9848-166-001 | 1 |
| * | Tub and Cylinder Assy. | 9869-029-001 | 9869-031-001 | 1 |



Door Latching Assembly Part # by Model Contuied

| Key | Description | T350 | T450 | QTY |
|-----|--------------------------------|--------------|--------------|-----|
| 10 | Screw, Hx. 10-32 x 1" | 9545-012-020 | 9545-012-020 | 1 |
| 11 | Nut, Elastic Stop 10-32 | 8640-413-004 | 8640-413-004 | 2 |
| 12 | Spring, Return | 9534-364-001 | 9534-364-001 | 2 |
| 13 | Pin, Guide | 9451-193-001 | 9451-193-001 | 1 |
| 14 | Ring, Retaining | 9487-200-005 | 9487-200-005 | 1 |
| 15 | Washer | 8641-581-031 | 8641-581-031 | 1 |
| 16 | Switch, Latching Sensing | 9539-461-008 | 9539-461-008 | 1 |
| 17 | Shield, Switch | 9550-169-003 | 9550-169-003 | 3 |
| 18 | Screw 4-40 x 5/8" | 9545-020-001 | 9545-020-001 | 2 |
| 18 | Nut, Twin 4-40 | 8640-401-001 | 8640-401-001 | 1 |
| 19 | Switch, Locking Sensing | 9539-461-007 | 9539-461-007 | 2 |
| 20 | Actuator, Switch Locking | 9008-006-003 | 9008-006-003 | 1 |
| 21 | Screw 4-40 x 1 1/8" | 9545-020-003 | 9545-020-003 | 2 |
| 21 | Nut, Twin 4-40 | 8640-401-001 | 8640-401-001 | 1 |
| * | Spacer Sensor | 9538-182-001 | 9538-182-001 | * |
| 22 | Pin, Dowel | 9451-181-004 | 9451-181-004 | 1 |
| * | Shim, Door Lock, Thin | 9552-037-001 | 9552-037-001 | AR |
| * | Screw, Lock mtg 1/4"-20 x 3/4" | 9545-018-004 | 9545-018-004 | 3 |
| * | Lockwasher 1/4" Ext tooth | 8641-582-007 | 8641-582-007 | 3 |
| * | Harness Door-Switches, P4 | 9627-791-003 | 9627-791-003 | 1 |
| | Switch, Door Hinge | 9539-492-001 | 9539-492-001 | 1 |
| | Wire Assy, Red | 8220-063-025 | 8220-063-025 | 1 |



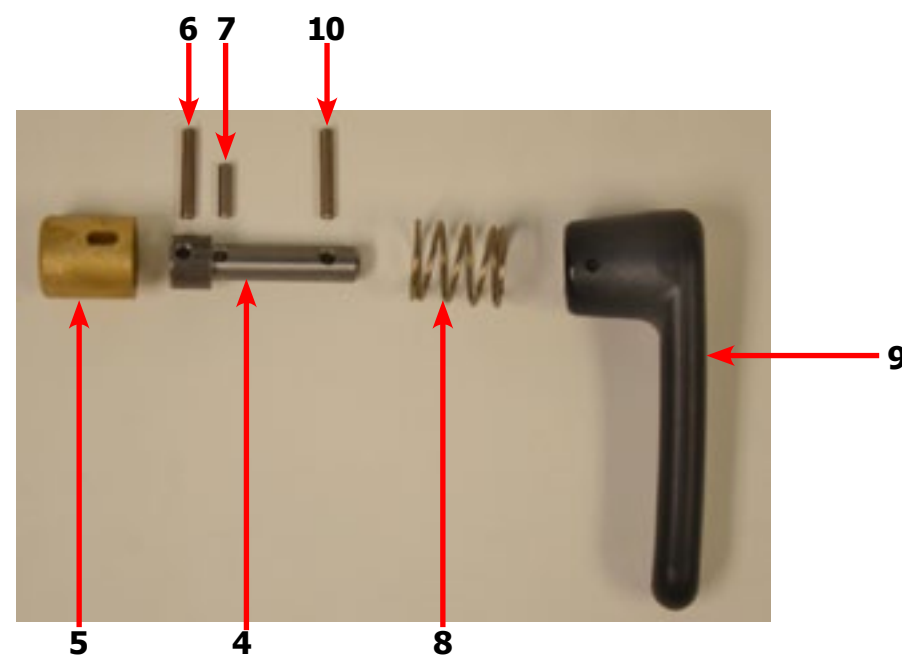
Door Latching Assembly Part # by Model

| Key | Description | T350 | T450 | QTY |
|-----|--|--------------|--------------|-----|
| 33 | Latching Assy, Complete (#1-22) (includes #1 thru #22) | 9885-031-001 | 9885-031-001 | 1 |
| 1 | Plate Assy, Door Lock | 9982-346-001 | 9982-346-001 | 1 |
| 2 | Washer, Flat | 8641-581-030 | 8641-581-030 | 1 |
| 3 | Actuator, Latching Switch | 9008-005-001 | 9008-005-001 | 1 |
| 4 | Pawl, Locking | 9732-346-002 | 9732-346-002 | 1 |
| 5 | Washer, Spring | 8641-569-003 | 8641-569-003 | 1 |
| 6 | Ring, Retaining | 9487-200-004 | 9487-200-004 | 1 |
| 7 | Bracket Switch | 9029-163-001 | 9029-163-001 | 1 |
| 8 | Nut, Hex 10-32 UNF | 8640-413-002 | 8640-413-002 | 2 |
| 9 | Spring, Actuating | 9534-364-002 | 9534-364-002 | 1 |
| * | Door Stud Pin, 3/16" x 3/4" | 9451-181-004 | 9451-181-004 | 1 |

Loading Door Part # by Model

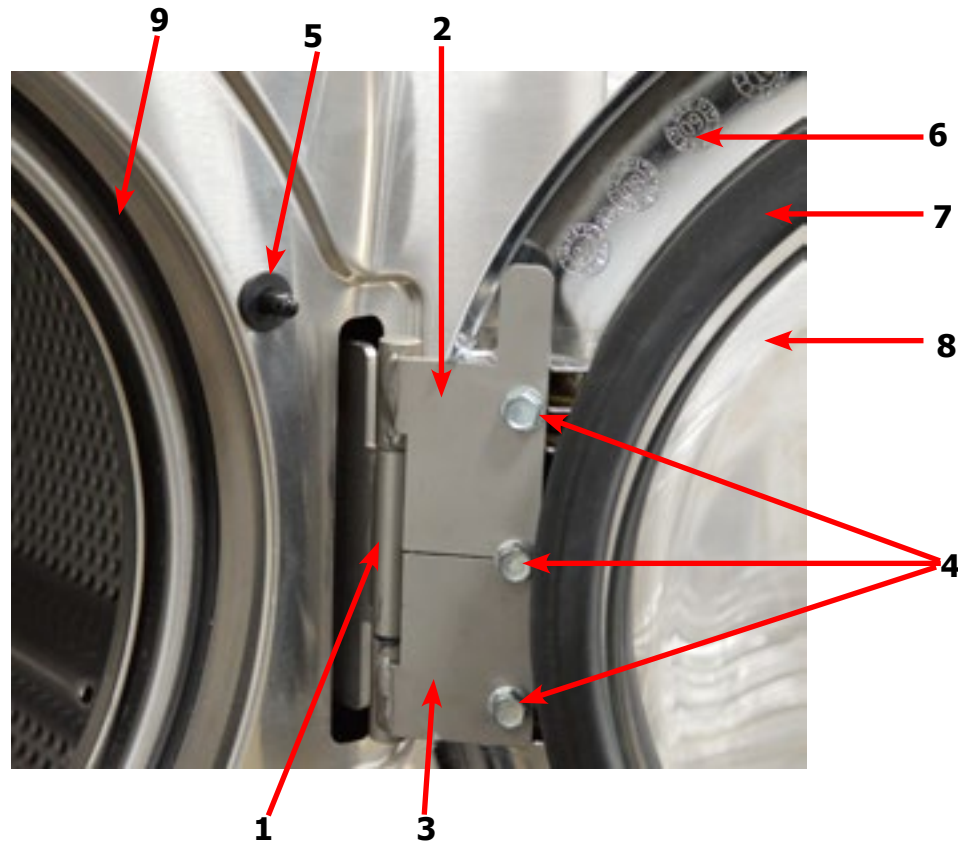


| Key | Description | T350 | T450 | QTY |
|-----|---|--------------|--------------|-----|
| * | Loading Door, Complete #1-10 | 9960-308-001 | 9960-309-001 | 1 |
| 1 | Loading Door, Ring | 9487-264-002 | 9487-265-002 | 1 |
| 2 | Gasket, Loading Door | 9206-411-002 | 9206-419-001 | 1 |
| 3 | Window, Loading Door | 9635-018-001 | 9635-016-001 | 1 |
| * | Shaft Assy, Locking (includes 4 thru 7) | 9913-136-001 | 9913-136-001 | 1 |
| 4 | Shaft, Door Locking | 9537-195-002 | 9537-195-002 | 1 |
| 5 | Cam, Locking | 9095-051-001 | 9095-051-001 | 1 |
| 6 | Pin, Groove (1 1/4) | 9451-181-005 | 9451-181-005 | 1 |
| 7 | Pin, Groove (3/4) | 9451-181-004 | 9451-181-004 | 1 |
| 8 | Spring, Lock Cam | 9534-360-002 | 9534-360-002 | 1 |
| 9 | Handle, Door | 9244-091-001 | 9244-091-001 | 1 |
| 10 | Pin, Door Handle (groove) | 9451-181-005 | 9451-181-005 | 1 |
| 11 | Door Hinge Assembly Mounts to Tub Front | 9955-030-001 | 9955-030-001 | |
| * | Shim, Loading Door Hinge (Thin) | 9552-036-001 | 9552-036-001 | 2 |
| * | Screw, 5/16-18x3/4 | 9545-014-009 | 9545-014-009 | 3 |
| * | Lock Washer, 5/16 | 8641-582-009 | 8641-582-009 | 3 |
| 12 | Leaf Assembly-Hinge, Top | 9845-008-001 | 9845-008-001 | 1 |
| 13 | Leaf Assembly-Hinge, Bottom | 9845-005-002 | 9845-005-002 | 1 |
| * | Screw, 5/16x5/8 | 9545-056-002 | 9545-056-002 | 3 |
| 14 | Bumper-Loading Door | 9051-055-001 | 9051-055-001 | 1 |
| * | Nut, 1/4, 20UNC, 2B | 8640-414-003 | 8640-414-003 | 1 |



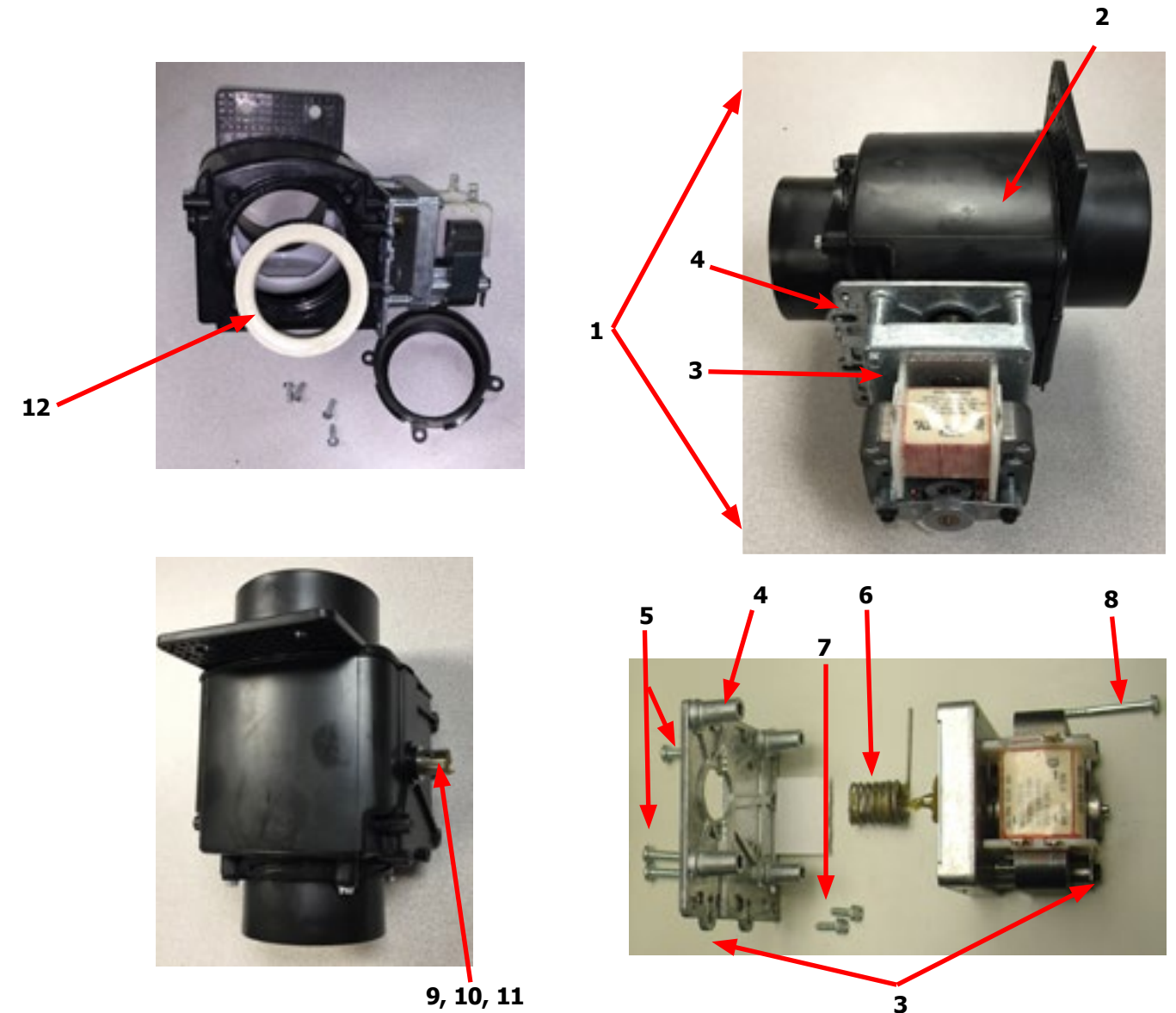
Loading Door Hinge 180 Degree Opening

| Key | Description | T350 | T450 | QTY |
|-----|---|--------------|--------------|-----|
| 1 | Door Hinge Assembly (mounts to tub front) | 9955-030-001 | 9955-030-001 | 1 |
| * | Shim, Loading Door Hinge (Thin) | 9552-036-001 | 9552-036-001 | 2 |
| * | Screw, 5/16-18x3/4 | 9545-014-009 | 9545-014-009 | 3 |
| * | Lock Washer, 5/16 | 8641-582-009 | 8641-582-009 | 3 |
| 2 | Leaf Assembly-Hinge, Top | 9845-008-001 | 9845-008-001 | 1 |
| 3 | Leaf Assembly-Hinge, Bottom | 9845-005-002 | 9845-005-002 | 1 |
| 4 | Screw, 5/16x5/8 | 9545-056-002 | 9545-056-002 | 3 |
| * | Red Wire (Door Close Switch) | 8220-063-025 | 8220-063-025 | 1 |
| * | Black Wire (Door Close Switch) | 8220-063-026 | 8220-063-026 | 1 |
| 5 | Switch, Door Hinge Close (Plunger) | 9539-492-001 | 9539-492-001 | 1 |
| 6 | Door Ring | 9487-264-002 | 9487-265-002 | 1 |
| 7 | Gasket, Door Glass | 9206-411-002 | 9206-419-001 | 1 |
| 8 | Window, Cloths | 9635-018-001 | 9635-016-001 | 1 |
| 9 | Trim Edge Protector | 9578-092-004 | 9578-092-005 | 1 |
| * | Bumper-Loading Door | 9051-055-001 | 9051-055-001 | 1 |
| * | Nut, 1/4, 20UNC, 2B | 8640-414-003 | 8640-414-003 | 1 |



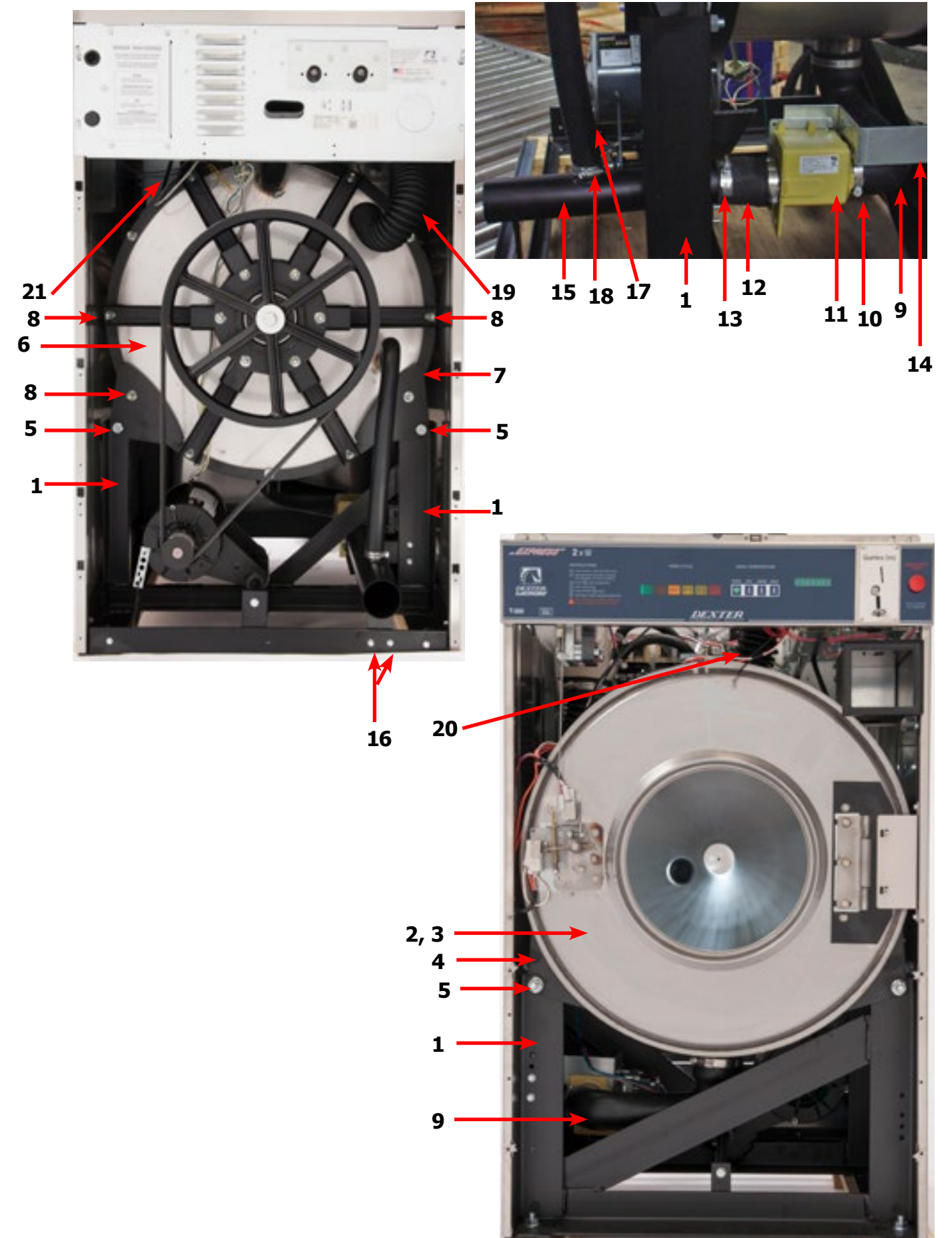
Drain Valve Group Part # by Model

| Key | Description | T350 | T450 | QTY |
|-----|---|--------------|--------------|-----|
| 1 | Valve, Drain (includes #2 thru #11) | 9379-199-001 | 9379-202-001 | 1 |
| 2 | Body, Valve (w/ball) | 9064-068-002 | 9064-072-001 | 1 |
| 3 | Motor & Gear Train (complete) | 9914-137-020 | 9914-137-023 | 1 |
| 4 | Plate, Motor Mtg | 9452-538-001 | 9452-538-001 | 1 |
| 5 | Screw | 8639-994-001 | 8639-994-001 | 3 |
| 6 | Spring, Drive | 9534-340-001 | 9534-339-001 | 1 |
| 7 | Screw | 9545-054-001 | 9545-054-001 | 2 |
| 8 | Screw | 9545-054-002 | 9545-054-002 | 1 |
| 9 | Seal, V Packer | 9532-134-001 | 9532-134-001 | 2 |
| 10 | Washer | 8641-584-001 | 8641-584-001 | 1 |
| 11 | Pin, Main Drive | 9451-196-001 | 9451-196-001 | 1 |
| * | Plate (spacers needed for replacement motor mtg. plate) | 9538-149-001 | 9538-149-001 | 4 |
| 12 | Kit - Seal Replacement | 9732-327-001 | 9732-327-001 | 1 |



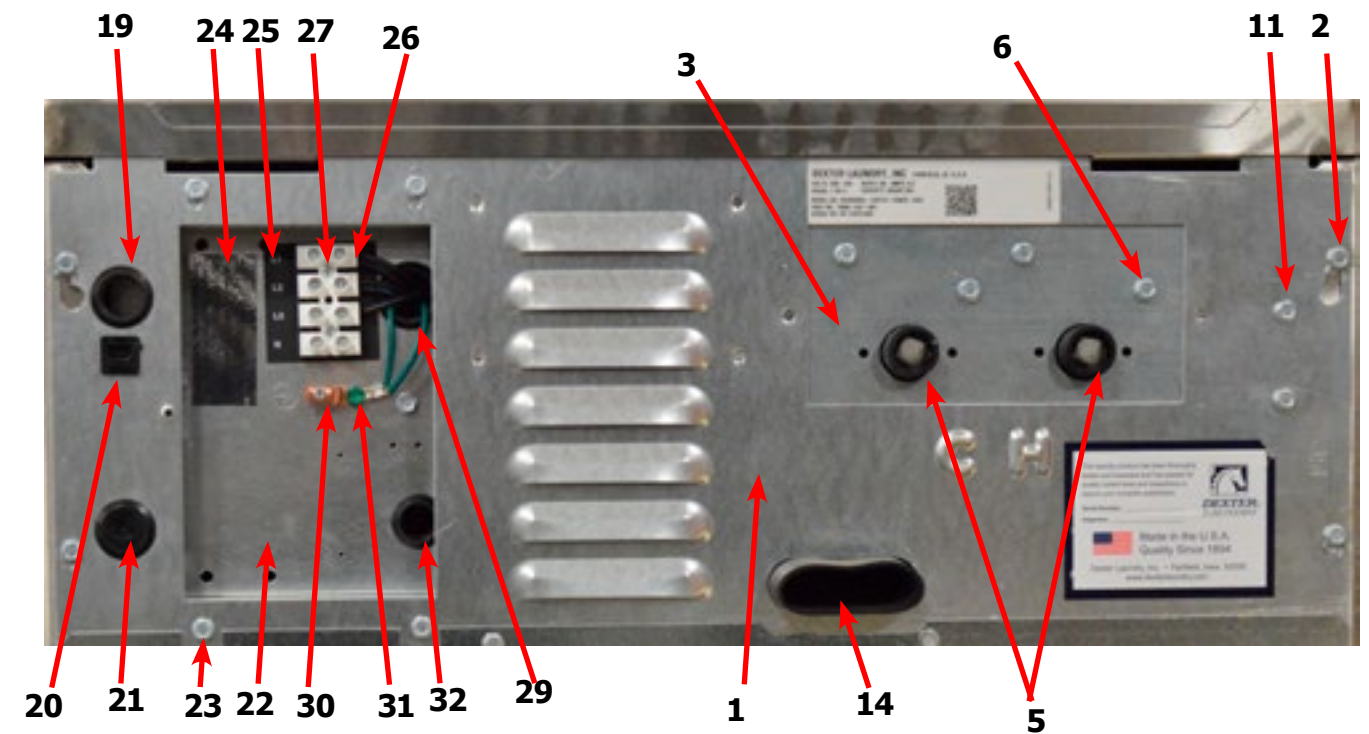
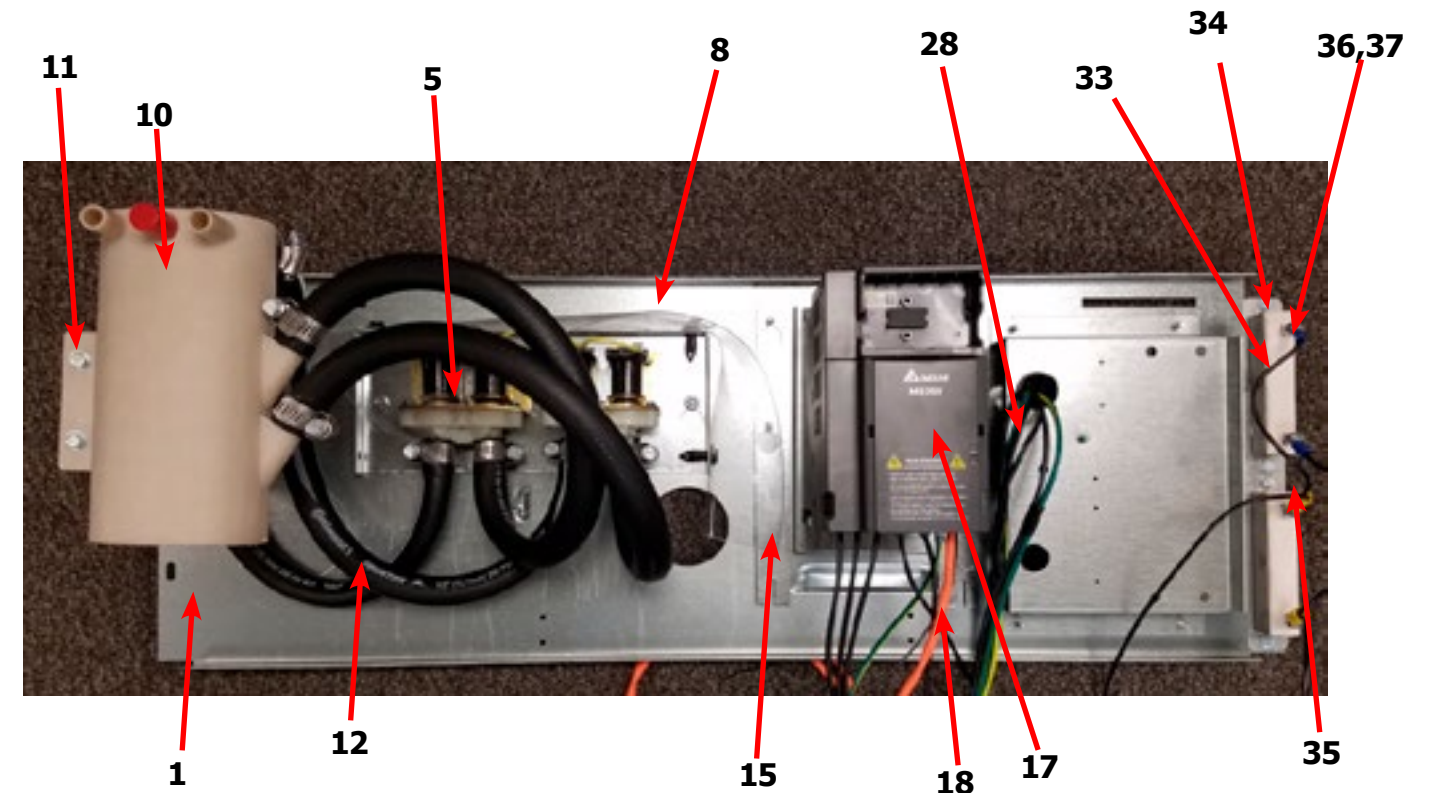
Chassis and Drain Part # by Model

| Key | Description | T350 | T450 | QTY |
|-----|--------------------------------------|--------------|--------------|-----|
| 1 | Base Assy,Frame | 9945-119-002 | 9945-141-002 | 1 |
| 2 | Outer Tub Assy | 9930-160-001 | 9930-162-001 | 1 |
| 3 | Tub & Cylinder Assy | 9869-029-002 | 9869-031-001 | 1 |
| 4 | Ring Assy, Tub Mtg-Front | 9950-057-002 | 9950-051-004 | 1 |
| 5 | Bolt, 1/2-13x1 1/4 (Ring to Base) | 9545-017-009 | | 4 |
| 5 | Nut, Wizlock, 1/2-13 (Ring to Base) | 8640-417-005 | | 4 |
| 5 | Bolt, 5/8-11x1 1/2 (Ring to Base) | | 9545-060-001 | 4 |
| 5 | Nut, Wizlock, 5/8-11 (Ring to Base) | | 8640-425-001 | 4 |
| * | Ring Assembly, Tub Mounting, Rear | 9950-046-002 | 9950-056-002 | 1 |
| 6 | Back Ass'y, Tub | 9962-016-001 | 9962-013-002 | 1 |
| 8 | Bolt, 3/8-16x1 1/2 | 9545-029-003 | | 12 |
| 8 | Nut, Wizlock, 3/8-16 | 8640-415-004 | | 12 |
| 8 | Bolt, 7/16-14 x 2 | | 9545-059-002 | 12 |
| 8 | Nut, Wizlock, 7/16-14 | | 8640-416-005 | 12 |
| 8 | Lockwasher | | 8641-582-018 | 4 |
| 8 | Nut, Hex 5/8-11 | | 8640-425-001 | 4 |
| * | Shim, Support Assembly (thin) | 9552-038-003 | 9552-038-001 | AR |
| 9 | Hose, Tub to Drain Valve | 9242-468-001 | 9242-456-001 | 1 |
| 10 | Clamp, Hose (Tub to Drain Valve) | 8654-117-014 | 8654-117-014 | 2 |
| 11 | Valve, Drain | 9379-199-001 | 9379-202-001 | 1 |
| 12 | Hose, Drain Valve to Tube | 9242-451-002 | 9242-457-001 | 1 |
| 13 | Clamp, Hose (Drain Valve to Tube) | 8654-117-014 | 8654-117-014 | 2 |
| 14 | Bracket, Drain Valve | 9029-005-001 | | 1 |
| * | Screw, Valve to Bracket 12ABx1/2 | 9545-008-026 | 9545-008-026 | 2 |
| 15 | Tube Assy, Drain | 9915-125-002 | 9915-119-002 | 1 |
| 16 | Screw Tube (Bracket to Base 1/4Bx3/4 | 9545-030-002 | 9545-030-002 | 2 |
| 17 | Hose, Overflow to drain | 9242-449-002 | 9242-449-002 | 1 |
| 18 | Clamp, Overflow Hose | 8654-117-015 | 8654-117-015 | 1 |
| 19 | Fill Hose, Vacuum Brkr. to Tub | 9242-458-001 | 9242-458-002 | 1 |
| * | Dispenser Soap | 9122-005-004 | 9122-005-004 | 1 |
| * | Gasket, Dispenser | 9206-416-001 | 9206-416-001 | 1 |
| * | Nut Spring SS | 8640-399-007 | 8640-399-007 | 4 |
| 20 | Hose, Dispenser to Tub | 9242-450-002 | 9242-450-002 | 1 |
| * | Clamp, Dispenser Hose | 8654-117-008 | 8654-117-008 | 2 |
| 21 | Hose, Pressure Switch | 9242-175-000 | 9242-175-007 | 1 |
| * | Clamp, Pressure Switch Hose | 8654-117-015 | 8654-117-015 | 1 |



Water Inlet & Rear Channel

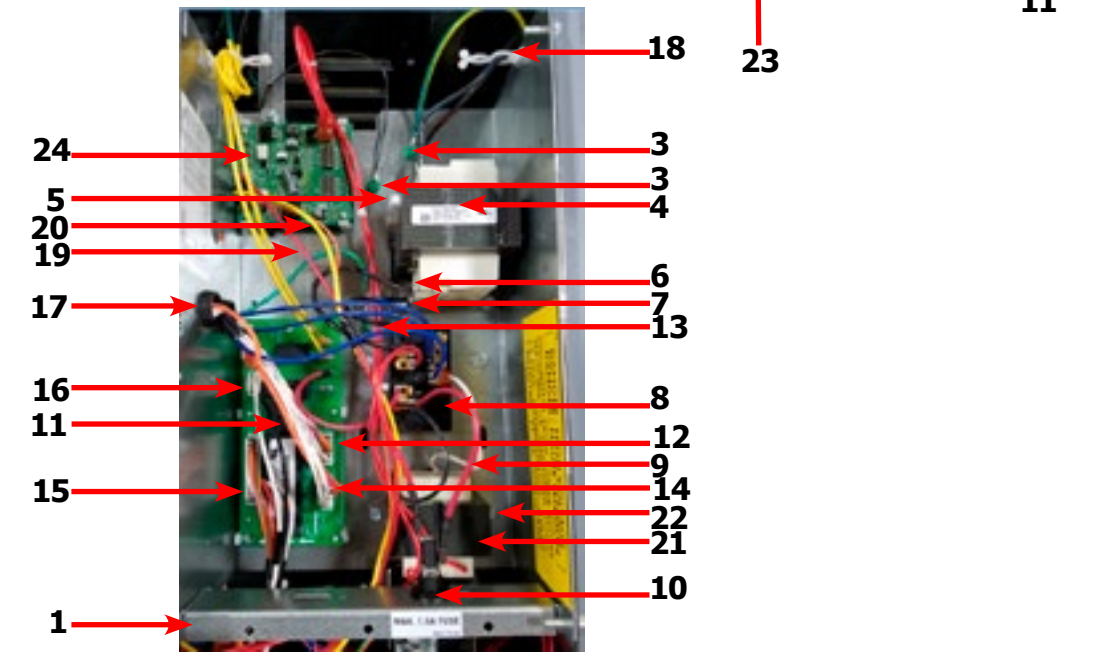
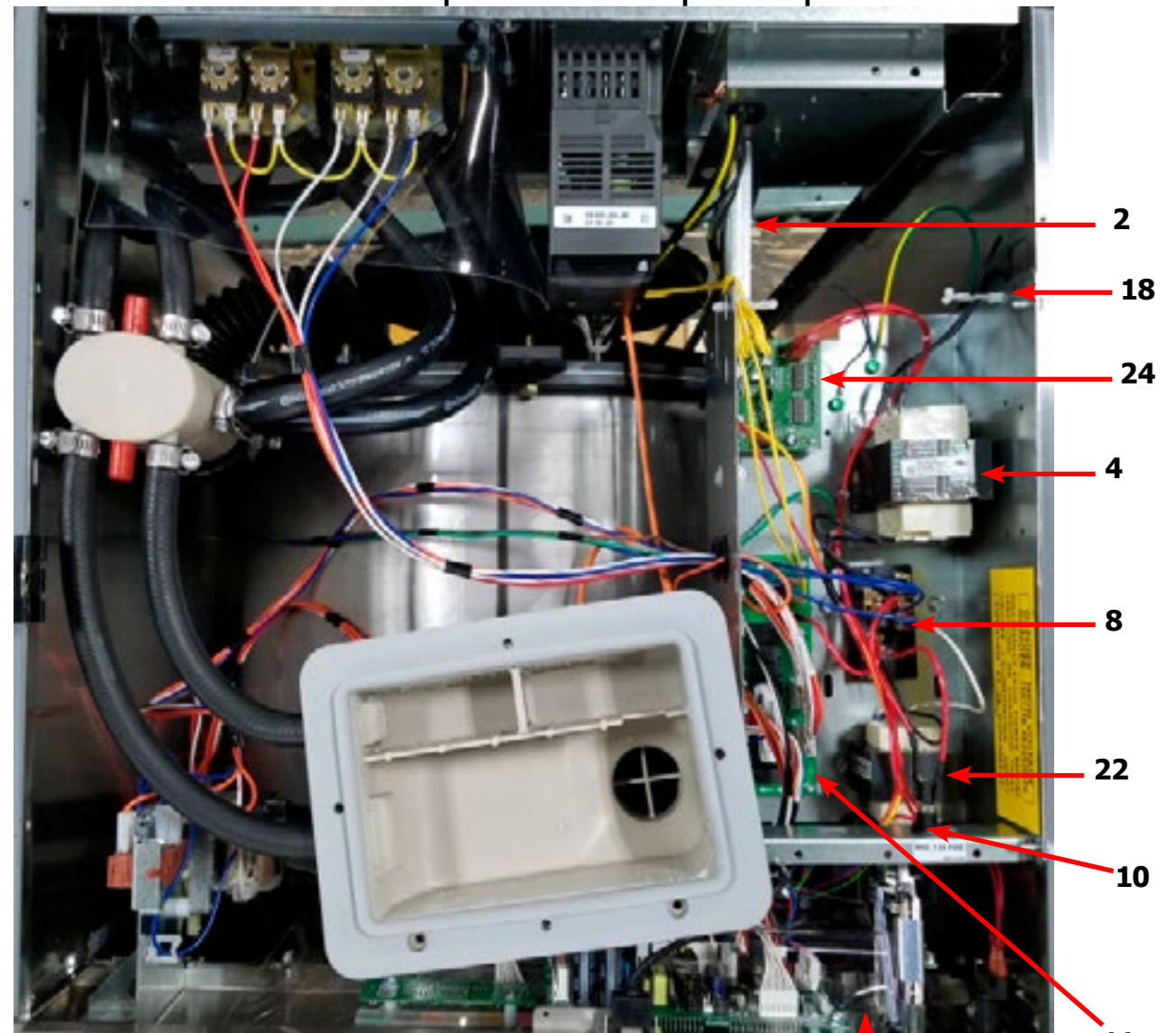
| Key | Description | T350 | T450 | QTY |
|-----|---|--------------|--------------|-----|
| 1 | Channel Assembly, Rear | 9947-025-001 | 9947-026-001 | 1 |
| 2 | Screw, #10B x 1/2 | 9545-008-026 | 9545-008-026 | 4 |
| * | Nut, Spring | 8640-399-007 | 8640-399-007 | 4 |
| 3 | Mounting Plate Water Valves | 9452-813-001 | 9452-813-001 | 1 |
| * | Nut-Elastic stop, #10-32 | 8640-413-002 | 8640-413-002 | 2 |
| 5 | Valve, Water Inlet (dual outlet) (see Water Inlet Valve Breakdown for individual parts) | 9379-183-012 | 9379-183-012 | 2 |
| 6 | Screw, Valve Mtg | 9545-008-026 | 9545-008-026 | 4 |
| * | Wire-Assy, Jumper, Yellow | 8220-123-001 | 8220-123-001 | 1 |
| 8 | Shield over Water Valves Plastic | 9550-194-001 | 9550-194-001 | 1 |
| * | Push Clip | 9083-121-001 | 9083-121-001 | 2 |
| 10 | Vacuum Breaker | 9610-001-001 | 9610-001-001 | 1 |
| * | Bracket, Vacuum Breaker | 9029-266-001 | 9029-077-001 | 1 |
| * | Vacuum Breaker Cap (Red) | 0935-135-002 | 0935-135-002 | * |
| 11 | Screw, #10B x 1/2 | 9545-008-026 | 9545-008-026 | 4 |
| * | Clamp, Hose to Vacume Braker | 8654-117-014 | 8654-117-014 | 1 |
| * | Hose, Vacuum Breaker to Tub | 9242-458-001 | 9242-458-002 | 1 |
| * | Clamp, Tub End | 8654-117-009 | 8654-117-009 | 1 |
| 12 | Hose, Valve to Vac. Braker | 9242-453-020 | 9242-453-020 | 4 |
| * | Hose, Cold, Vac. Brkr. dispenser | 9242-453-007 | 9242-453-016 | 1 |
| * | Hose, Hot, Vac. Brkr. dispenser | 9242-453-020 | 9242-453-017 | 1 |
| * | Clamp, Hose-Worm | 8654-117-015 | 8654-117-015 | 12 |
| 14 | Hose, overflow Suds | 9242-463-003 | 9242-463-003 | 4 |
| * | Clamp, Hose-Spring (overflow to tub back) | 8654-117-018 | 8654-117-018 | 2 |
| 15 | Plate Assembly, Drive Mounting | 9452-847-001 | 9452-847-001 | 1 |
| * | Nut-#10-32UNF, 2B | 8640-413-002 | 8640-413-002 | 4 |
| 17 | VFD Delta MS300 | 9375-034-003 | 9375-035-003 | 1 |
| * | VFD Cooling Fan | 9189-015-001 | 9189-016-001 | 1 |
| * | Key Pad-Display Delta MS300 | 9150-058-001 | 9150-058-001 | 1 |
| 18 | Cable-Data, Communication | 9806-025-001 | 9806-025-001 | 1 |
| 19 | Bushing, 7/8 | 9053-067-002 | 9053-067-002 | 1 |
| 20 | Clip Strain Relif | 8618-037-001 | | 1 |
| 21 | Plug, 7/8 | 9545-041-006 | 9545-041-006 | 1 |
| 22 | Bracket, Terminal-Mounting | 9029-265-001 | 9029-265-001 | 1 |
| 23 | Screw, #10B x 1/2 | 9545-008-026 | 9545-008-026 | 4 |
| 24 | Label-Warning | 8502-639-001 | 8502-639-001 | 1 |
| 25 | Strip-Terminal Marker | 9558-025-001 | 9558-025-001 | 1 |
| 26 | Terminal Block | 9897-033-002 | 9897-033-002 | 1 |
| 27 | Screw-Phillips, 6ABx3/4 | 9545-031-010 | 9545-031-010 | 2 |
| 28 | Harness-Power, Terminal Block | 9627-747-003 | 9627-747-003 | 1 |
| 29 | Bushing, 1" | 9053-067-004 | 9053-067-004 | 1 |
| 30 | Terminal Lug, Solderless | 8652-134-001 | 8652-134-001 | 1 |
| 31 | Lock-Washer Extooth #10 | 8641-582-006 | 8641-582-006 | 1 |
| 31 | Screw, #10-32 TTX 1/2 GRN | 9545-008-027 | 9545-008-027 | 1 |
| 32 | Bushing, 3/4 | 9053-067-001 | 9053-067-001 | 1 |
| 33 | Braking resistors (200 ohm) | 9483-004-002 | 9483-004-002 | 2 |
| 34 | Screw-#10Bx1/2 | 9545-008-026 | 9545-008-026 | 4 |



| Key | Description | T350 | T450 | QTY |
|-----|-----------------------|--------------|--------------|-----|
| 35 | Wire Assy, Jumper | 8220-117-002 | 8220-117-002 | 2 |
| 36 | Screw, #6-32x5/16 | 9545-044-006 | 9545-044-006 | 4 |
| 37 | Nut, #6-32 | 8640-411-003 | 8640-411-003 | 4 |
| * | Cover Controls | 9074-267-001 | 9074-267-001 | 1 |
| * | Screw-#10Bx1/2 | 9545-008-026 | 9545-008-026 | 1 |
| * | Label-Warning, Notice | 8502-761-001 | 8502-761-001 | 1 |

| Key | Description | T350 | T450 | QTY |
|-----|--|--------------|--------------|-----|
| 1 | Trough Assy,Control 208-240 volt (all parts below 7-28 & trough) | 9857-255-001 | 9857-257-001 | 1 |
| * | Trough only | 9839-018-001 | 9839-018-001 | 1 |
| * | Screw, Trough Sides | 9545-008-026 | 9545-008-026 | 4 |
| * | Lockwasher Exttooth #10 | 8641-582-006 | 8641-582-006 | 4 |
| 2 | Angle Support Trough | 9003-337-001 | 9003-337-001 | 1 |
| * | Screw, Trough Bracket | 9545-008-026 | 9545-008-026 | 3 |
| 3 | Screw GRN. #10-32x 1/2" | 9545-008-027 | 9545-008-027 | 1 |
| * | Lockwasher #10 | 8641-582-006 | 8641-582-006 | 1 |
| 4 | Transformer, Control 208/240 (Secondary Voltage to 115 volts) | 8711-004-001 | 8711-004-001 | 1 |
| 5 | Screw, Mtg #10Bx1/2" | 9545-008-026 | 9545-008-026 | 4 |
| * | Lockwasher #10 | 8641-582-006 | 8641-582-006 | 4 |
| 6 | Wire Assy-BLK/RED, 8 1/2" | 8220-001-230 | 8220-001-230 | 1 |
| 7 | Wire Assy-BLK/BLUE, 8 1/2" | 8220-001-231 | 8220-001-231 | 1 |
| 8 | Terminal Block Assy, POWER | 9897-026-004 | 9897-026-004 | 1 |
| * | Screw, Mtg 8Bx3/8" | 9545-045-012 | 9545-045-012 | 2 |
| 9 | Wire Assy, RED, #36, 7" | 9631-381-018 | 9631-381-018 | 3 |
| 10 | Fuse Holder | 9200-001-002 | 9200-001-002 | 1 |
| * | Fuse 1.5 amp | 8636-018-001 | 8636-018-001 | 1 |
| * | Label Fuse 1.5 amp | 8502-716-001 | 8502-716-001 | 1 |
| 11 | PCB assembly Relay Main | 9473-006-001 | 9473-006-001 | 1 |
| * | Support-PCB, 3/8 Edge Holding | 9548-285-001 | 9548-285-001 | 6 |
| 12 | Harness Drain/Therm/Sol, P17 | 9627-796-001 | 9627-796-001 | 1 |
| 13 | Screw GRN. #10-32x 1/2" | 9545-008-027 | 9545-008-027 | 1 |
| * | Lockwasher #10 | 8641-582-006 | 8641-582-006 | 1 |
| * | Lug, Grounding | 8652-130-037 | 8652-130-037 | 1 |
| 14 | Harness P19/Water Valve | 9627-795-003 | 9627-795-003 | 1 |
| 15 | Harness P8/P16 | 9627-794-001 | 9627-794-001 | 1 |
| 16 | Harness P20/P21 | 9627-793-001 | 9627-793-001 | 1 |
| 17 | Bushing , Wire 7/8 | 9053-067-002 | 9053-067-002 | 2 |
| 18 | Standoff Twistlock | 9527-002-002 | 9527-002-002 | 4 |
| 21 | Harness P5/Pressure | 9627-908-003 | 9627-908-005 | 1 |
| * | Harness Doorlock, Switch P4/P15 | 9627-791-003 | 9627-791-003 | 1 |
| 22 | Transformer, (Step Down)120VAC / 24 VAC 50/60hz | 8711-009-006 | 8711-009-006 | 1 |
| * | Screw, Transformer #8Bx1/4" | 9545-045-001 | 9545-045-001 | 2 |
| * | Lockwasher #6 exttooth | 8641-582-005 | 8641-582-005 | 2 |
| 23 | PCB assembly Control /Display | 9473-010-001 | 9473-010-001 | 1 |
| 24 | Kit-Pressure Sensor, Electronic | 9732-314-001 | 9732-314-001 | 1 |
| 24 | Kit-Repaacement, Pressure Sensor (only) | 9732-315-001 | 9732-315-001 | 1 |
| * | Support-PCB, 3/8", Edge Holding | 9548-285-001 | 9548-285-001 | 1 |

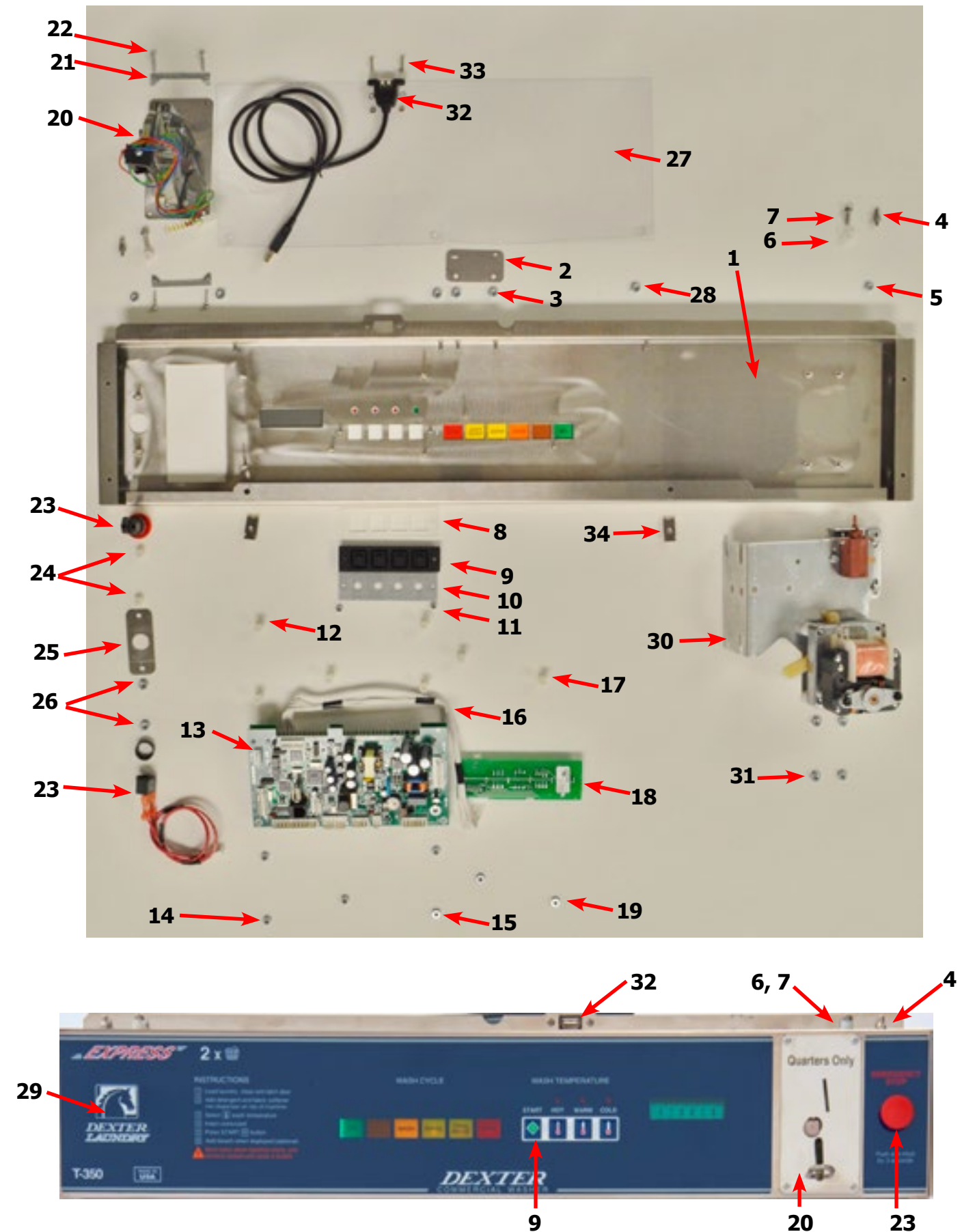
Electrical Components - Top Compartment



Electronic Pressure Sensor

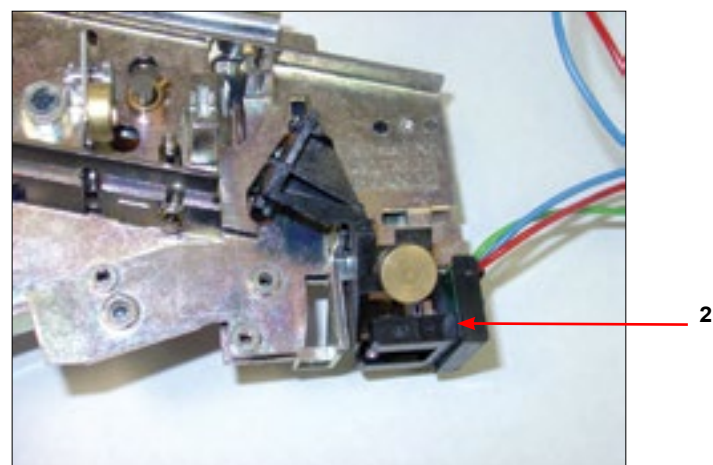
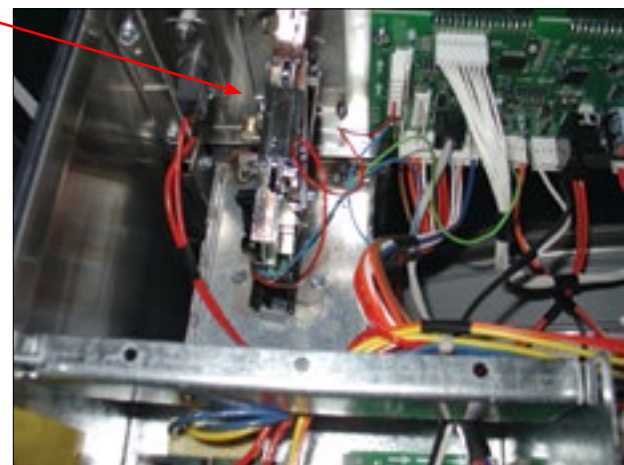
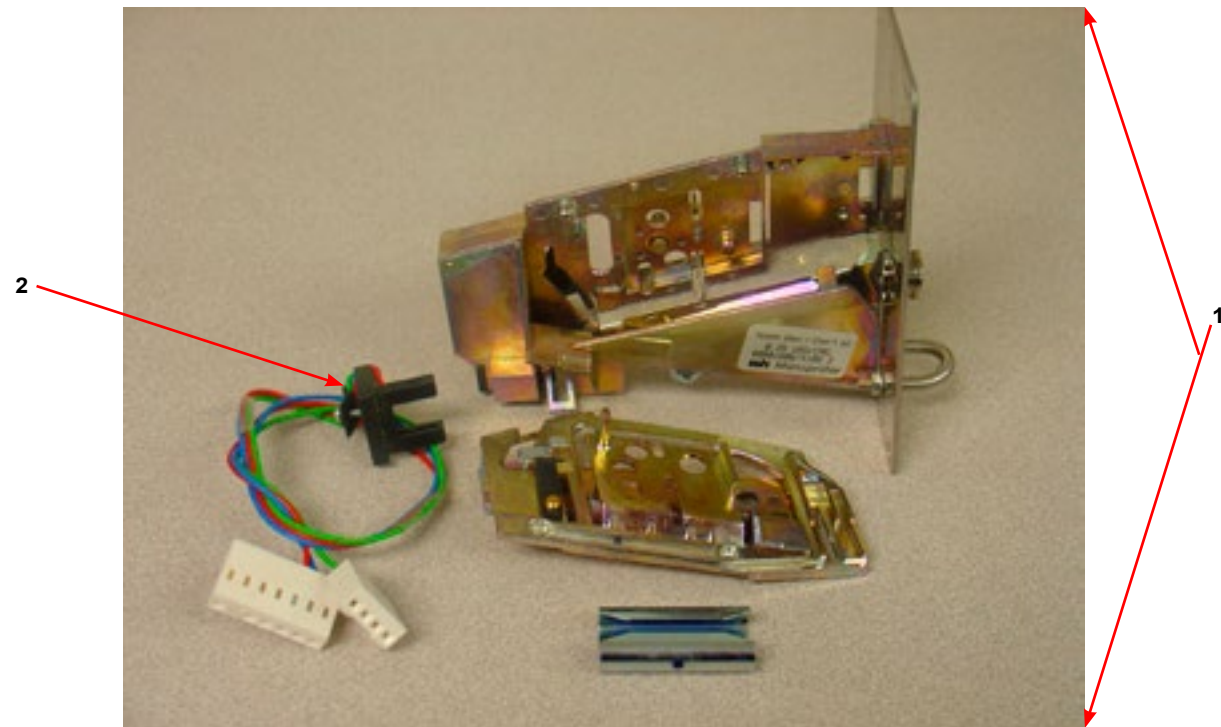
Control Panel Part # by Model

| Key | Description | T350 | T450 | QTY |
|-----|---|--------------|--------------|-----|
| 1 | Panel Control Assembly(panel only) | 9989-557-001 | 9989-558-001 | 1 |
| * | Screw, to Side Panels 5/16, Hxwshrhdundct #10Bx 1/2" | 9545-008-026 | 9545-008-026 | 4 |
| 2 | Plate-Latch, Top | 9452-625-001 | 9452-625-001 | 1 |
| 3 | Nut, #8-32 | 8640-412-005 | 8640-412-005 | 2 |
| 4 | Post Locator Top | 9467-024-001 | 9467-024-001 | 2 |
| 5 | Nut Hexkeps #6-32 | 8640-411-003 | 8640-411-003 | 2 |
| 6 | Locator Panel | 9355-001-001 | 9355-001-001 | 2 |
| 7 | Screw FillHDCR 10Bx1/2" Guide | 9545-008-023 | 9545-008-023 | 2 |
| 8 | Spacer Pushbutton (Micro) | 9538-192-001 | 9538-192-001 | 1 |
| 9 | Pushbutton Control (coin)[Blue] | 9035-062-001 | 9035-062-001 | 1 |
| 9 | Pushbutton Control (coin)[Black] | 9035-062-002 | 9035-062-001 | 1 |
| 10 | Retainer Pushbutton (Micro) | 9486-150-001 | 9486-150-001 | 1 |
| 11 | Nut Hexelasticstop #4-40 | 8640-424-002 | 8640-424-002 | 2 |
| 12 | Spacer Plastic #6x9/16 | 9538-157-018 | 9538-157-018 | 5 |
| 13 | PCB assembly Control /Display STOP | 9473-010-001 | 9473-010-001 | 1 |
| 14 | Nut Elasticstop #6-32 | 8640-411-002 | 8640-411-002 | 5 |
| 15 | Nut-Hexkeps, #6-32 | 8640-411-003 | 8640-411-003 | 1 |
| 16 | Harness LEDPCB | 9627-797-001 | 9627-797-001 | 1 |
| * | Harness Doorlock, Switches P4/P15 | 9627-791-003 | 9627-791-003 | 1 |
| 17 | Spacer Plastic #6x9/16 | 9538-157-018 | 9538-157-018 | 2 |
| 18 | PCB assembly Mode lights | 9473-005-001 | 9473-005-001 | 1 |
| 19 | Nut Hexkeps #6-32 | 8640-411-003 | 8640-411-003 | 2 |
| * | Mode Light Backing Window | 9635-022-001 | 9635-022-001 | 1 |
| 20 | Acceptor-Coin, Optical | 9021-092-002 | 9021-092-002 | 1 |
| 21 | Retainer, Coin Acceptor | 9486-149-001 | 9486-149-001 | 2 |
| 22 | Screws, Torx, T-10, 4Bx3/8ss | 9545-053-002 | 9545-053-002 | 2 |
| 23 | Switch Assembly Emergency Stop (includes wire harness) | 9732-223-001 | 9732-223-001 | 1 |
| 24 | Spacer Plastic #8x5/16 E-Stop | 9538-157-020 | 9538-157-020 | 2 |
| 25 | Plate to mount e-stop button | 9452-725-001 | 9452-725-001 | 1 |
| 26 | Nuts-Hexkeps, #8-32 | 8640-412-005 | 8640-412-005 | 3 |
| 27 | Plastic Shield over main PCB | 9550-184-001 | 9550-184-001 | 1 |
| 28 | Nuts-Hexkeps, #8-32 | 8640-412-005 | 8640-412-005 | 3 |
| 29 | Nameplate,Control Panel (Blue) | 9412-209-002 | 9412-211-002 | 1 |
| 29 | Nameplate,Control Panel (Black) | 9412-209-001 | 9412-211-001 | 1 |
| * | Label Name Plate RH (Blue) | 8502-744-002 | | 1 |
| * | Label Name Plate RH (Black) | 8502-744-001 | | 1 |
| 30 | Motor Ass'y, Door Locking (see Door Lock Group for parts breakdown) | 9922-015-001 | 9892-015-001 | 1 |
| 31 | Nuts-Hexkeps, #8-32 | 8640-412-005 | 8640-412-005 | 3 |
| * | Battery | 8612-001-001 | 8612-001-001 | 1 |
| 32 | Cable, USB | 9806-022-001 | 9806-022-001 | 1 |
| * | USB Retainer | 9486-159-001 | 9486-159-001 | * |
| 33 | Screw-Torx T10, #4-40x3/8ss | 9545-053-002 | 9545-053-002 | 2 |
| 34 | Nut, Spring | 8640-399-008 | 8640-399-008 | 2 |



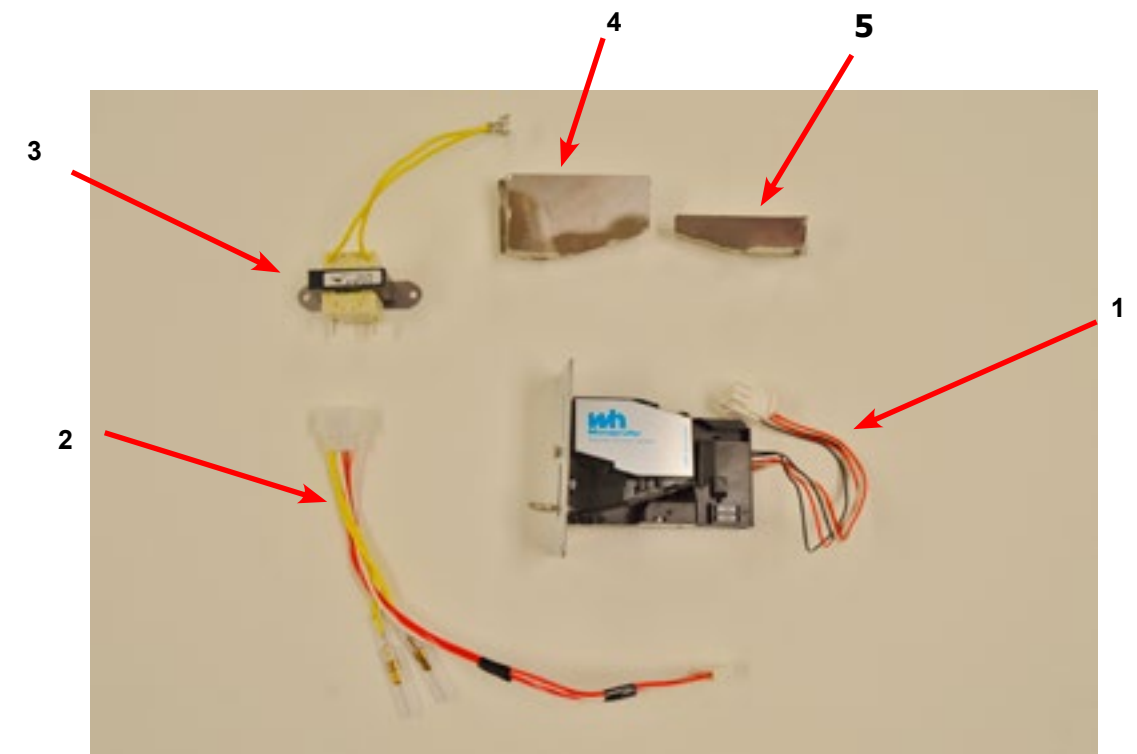
Optical Coin Acceptor

| Key | Description | T350 | T450 | QTY |
|-----|----------------------------|--------------|--------------|-----|
| 1 | Optical Coin Acceptor | 9021-092-002 | 9021-092-002 | 1 |
| 2 | Replacement Optical Sensor | 9801-099-001 | 9801-099-001 | 1 |
| * | Screw, Highth Bar, 3mm | 9545-039-002 | 9545-039-002 | 2 |



Kit - Electronic Acceptor (USA and Canada)

| Key | Description | T350 | T450 | QTY |
|-----|--|--------------|--------------|-----|
| | KIT - Electronic Acceptor Conversion for C-Series (USA and Canada) Contact the Dexter Factory for Other Countries | 9732-301-004 | 9732-301-004 | 1 |
| 1 | Electronic Coin Acceptor (USA and Canada) | 9021-077-001 | 9021-077-001 | 1 |
| 2 | Harness for Electronic Coin Acceptor | 9627-909-001 | 9627-909-001 | 1 |
| 3 | Transformer 120/18VAC | 8711-015-001 | 8711-015-001 | 1 |
| * | Wire Assembly - Blue | 8220-001-338 | 8220-001-338 | 1 |
| * | Wire Assembly - Orange/White | 8220-001-235 | 8220-001-235 | 1 |
| 4 | Coin Chute for Electronic Drop | 9119-028-001 | 9119-028-001 | 1 |
| * | Nut - Hex Elastic Stop | 8640-424-002 | 8640-424-002 | 1 |
| * | Screw, Torx | 9545-020-004 | 9545-020-004 | 4 |
| * | Screw, Hex | 9545-045-001 | 9545-045-001 | 4 |
| * | Label, Informative | 6102-017-001 | 6102-017-001 | 2 |
| * | Label, Warning | 8502-730-001 | 8502-730-001 | 1 |
| * | Instructions, Installation | 8507-466-004 | 8507-466-004 | 1 |
| 5 | Coin Chute for Electronic Drop | 9119-030-001 | 9119-030-001 | 1 |



Electronic Acceptor Coin Drop

Setting the electronic coin acceptor switches

Some washer models come equipped with an electronic coin acceptor. Follow the instructions below for setting the switches for the desired country and currencies.

1. The electronic coin acceptor has switch settings depending on the coins and country. See the table below for available values of the left and right coin inputs for the available countries.

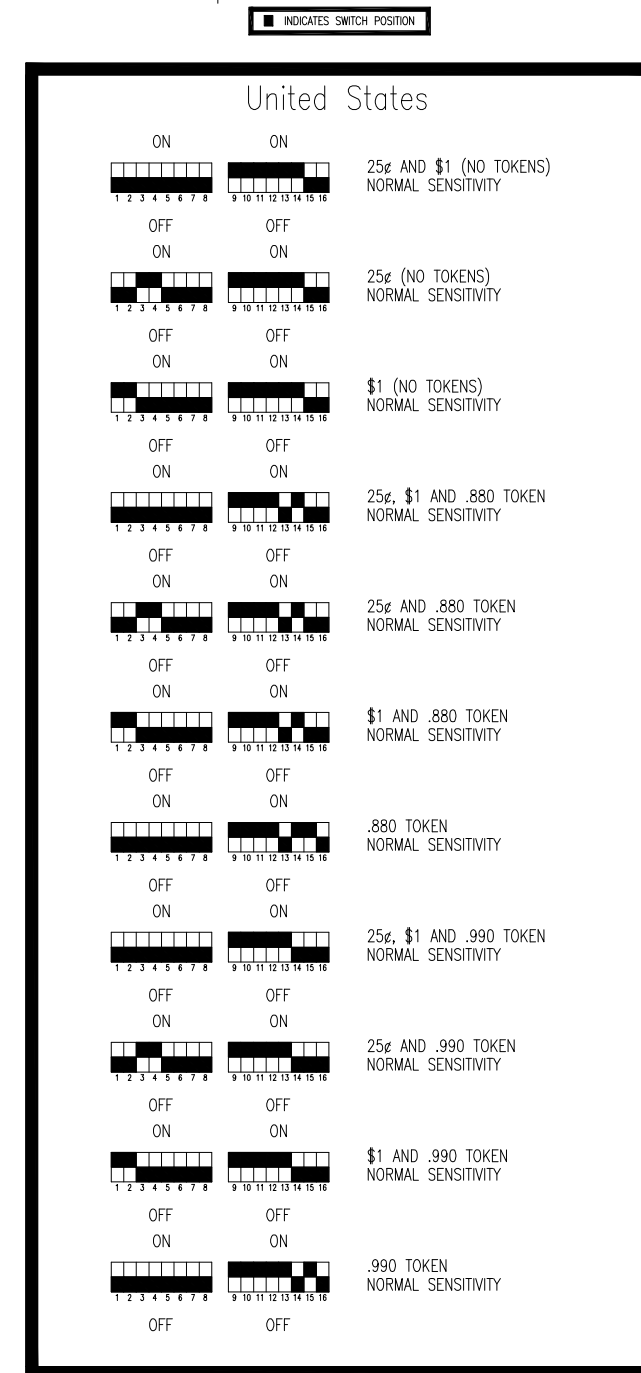
WARNING: turn power off before and leave power off when changing the switches of the electronic coin acceptor.

2. Turn power back on and test coins to ensure proper operation.



Dip Switches

Coin Acceptor Switch Settings



25¢ – one pulse on left washer/dryer input
 \$1 – one pulse on right washer/dryer input
 .880 TOKEN – one pulse on left washer/dryer input
 .990 TOKEN – one pulse on right washer/dryer input

Coin Acceptor Switch Settings

■ INDICATES SWITCH POSITION

Canada

| | | |
|-----|-----|---|
| ON | ON | 25¢, \$1(OLD & NEW), \$2(OLD & NEW) (NO TOKENS) NORMAL SENSITIVITY |
| OFF | OFF | |
| ON | ON | \$1(OLD & NEW) AND \$2(OLD & NEW) (NO TOKENS) NORMAL SENSITIVITY |
| OFF | OFF | |
| ON | ON | 25¢ AND \$2(OLD & NEW) (NO TOKENS) NORMAL SENSITIVITY |
| OFF | OFF | |
| ON | ON | 25¢ AND \$1(OLD & NEW) (NO TOKENS) NORMAL SENSITIVITY |
| OFF | OFF | |
| ON | ON | 25¢ (NO TOKENS) NORMAL SENSITIVITY |
| OFF | OFF | |
| ON | ON | \$2(OLD & NEW) (NO TOKENS) NORMAL SENSITIVITY |
| OFF | OFF | |
| ON | ON | \$1(OLD & NEW) (NO TOKENS) NORMAL SENSITIVITY |
| OFF | OFF | |
| ON | ON | 25¢, \$1(NEW ONLY), \$2(NEW ONLY) (NO TOKENS) NORMAL SENSITIVITY |
| OFF | OFF | |
| ON | ON | \$1(NEW ONLY) AND \$2(NEW ONLY) (NO TOKENS) NORMAL SENSITIVITY |
| OFF | OFF | |
| ON | ON | 25¢ AND \$2(NEW ONLY) (NO TOKENS) NORMAL SENSITIVITY |
| OFF | OFF | |
| ON | ON | 25¢ AND \$1(NEW ONLY) (NO TOKENS) NORMAL SENSITIVITY |
| OFF | OFF | |
| ON | ON | \$2(NEW ONLY) (NO TOKENS) NORMAL SENSITIVITY |
| OFF | OFF | |
| ON | ON | \$1(NEW ONLY) (NO TOKENS) NORMAL SENSITIVITY |
| OFF | OFF | |

Canada

| | | |
|-----|-----|--|
| ON | ON | 25¢, \$1(OLD & NEW), \$2(OLD & NEW) AND .880 TOKEN NORMAL SENSITIVITY |
| OFF | OFF | |
| ON | ON | \$1(OLD & NEW), \$2(OLD & NEW) AND .880 TOKEN NORMAL SENSITIVITY |
| OFF | OFF | |
| ON | ON | 25¢, \$2(OLD & NEW) AND .880 TOKEN NORMAL SENSITIVITY |
| OFF | OFF | |
| ON | ON | 25¢, \$1(OLD & NEW) AND .880 TOKEN NORMAL SENSITIVITY |
| OFF | OFF | |
| ON | ON | 25¢ AND .880 TOKEN NORMAL SENSITIVITY |
| OFF | OFF | |
| ON | ON | \$2(OLD & NEW) AND .880 TOKEN NORMAL SENSITIVITY |
| OFF | OFF | |
| ON | ON | \$1(OLD & NEW) AND .880 TOKEN NORMAL SENSITIVITY |
| OFF | OFF | |
| ON | ON | 25¢, \$1(NEW ONLY), \$2(NEW ONLY) AND .880 TOKEN NORMAL SENSITIVITY |
| OFF | OFF | |
| ON | ON | \$1(NEW ONLY), \$2(NEW ONLY) AND .880 TOKEN NORMAL SENSITIVITY |
| OFF | OFF | |
| ON | ON | 25¢, \$2(NEW ONLY) AND .880 TOKEN NORMAL SENSITIVITY |
| OFF | OFF | |
| ON | ON | 25¢, \$1(NEW ONLY) AND .880 TOKEN NORMAL SENSITIVITY |
| OFF | OFF | |
| ON | ON | \$2(NEW ONLY) AND .880 TOKEN NORMAL SENSITIVITY |
| OFF | OFF | |
| ON | ON | \$1(NEW ONLY) AND .880 TOKEN NORMAL SENSITIVITY |
| OFF | OFF | |

25¢ – one pulse on left washer/dryer input
 \$1 – one pulse on right washer/dryer input
 \$2 – two pulses on right washer/dryer input
 .880 TOKEN – one pulse on right washer/dryer input
 .990 TOKEN – one pulse on right washer/dryer input

Coin Acceptor Switch Settings

■ INDICATES SWITCH POSITION

Canada

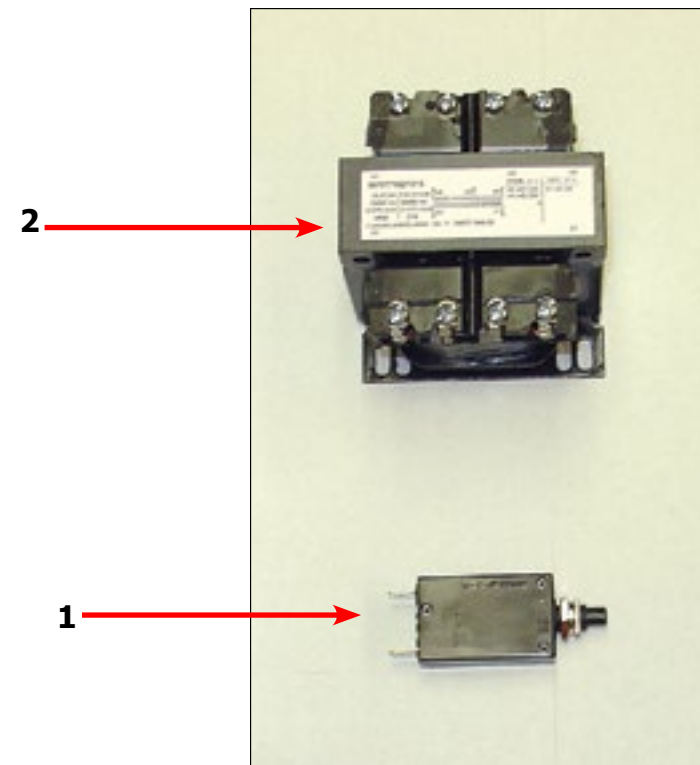
| | | |
|-----|-----|--|
| ON | ON | 25¢, \$1(OLD & NEW), \$2(OLD & NEW) AND .990 TOKEN NORMAL SENSITIVITY |
| OFF | OFF | |
| ON | ON | \$1(OLD & NEW), \$2(OLD & NEW) AND .990 TOKEN NORMAL SENSITIVITY |
| OFF | OFF | |
| ON | ON | 25¢, \$2(OLD & NEW) AND .990 TOKEN NORMAL SENSITIVITY |
| OFF | OFF | |
| ON | ON | 25¢, \$1(OLD & NEW) AND .990 TOKEN NORMAL SENSITIVITY |
| OFF | OFF | |
| ON | ON | 25¢ AND .990 TOKEN NORMAL SENSITIVITY |
| OFF | OFF | |
| ON | ON | \$2(OLD & NEW) AND .990 TOKEN NORMAL SENSITIVITY |
| OFF | OFF | |
| ON | ON | \$1(OLD & NEW) AND .990 TOKEN NORMAL SENSITIVITY |
| OFF | OFF | |
| ON | ON | 25¢, \$1(NEW ONLY), \$2(NEW ONLY) AND .990 TOKEN NORMAL SENSITIVITY |
| OFF | OFF | |
| ON | ON | \$1(NEW ONLY), \$2(NEW ONLY) AND .990 TOKEN NORMAL SENSITIVITY |
| OFF | OFF | |
| ON | ON | 25¢, \$2(NEW ONLY) AND .990 TOKEN NORMAL SENSITIVITY |
| OFF | OFF | |
| ON | ON | 25¢, \$1(NEW ONLY) AND .990 TOKEN NORMAL SENSITIVITY |
| OFF | OFF | |
| ON | ON | \$2(NEW ONLY) AND .990 TOKEN NORMAL SENSITIVITY |
| OFF | OFF | |
| ON | ON | \$1(NEW ONLY) AND .990 TOKEN NORMAL SENSITIVITY |
| OFF | OFF | |

Canada

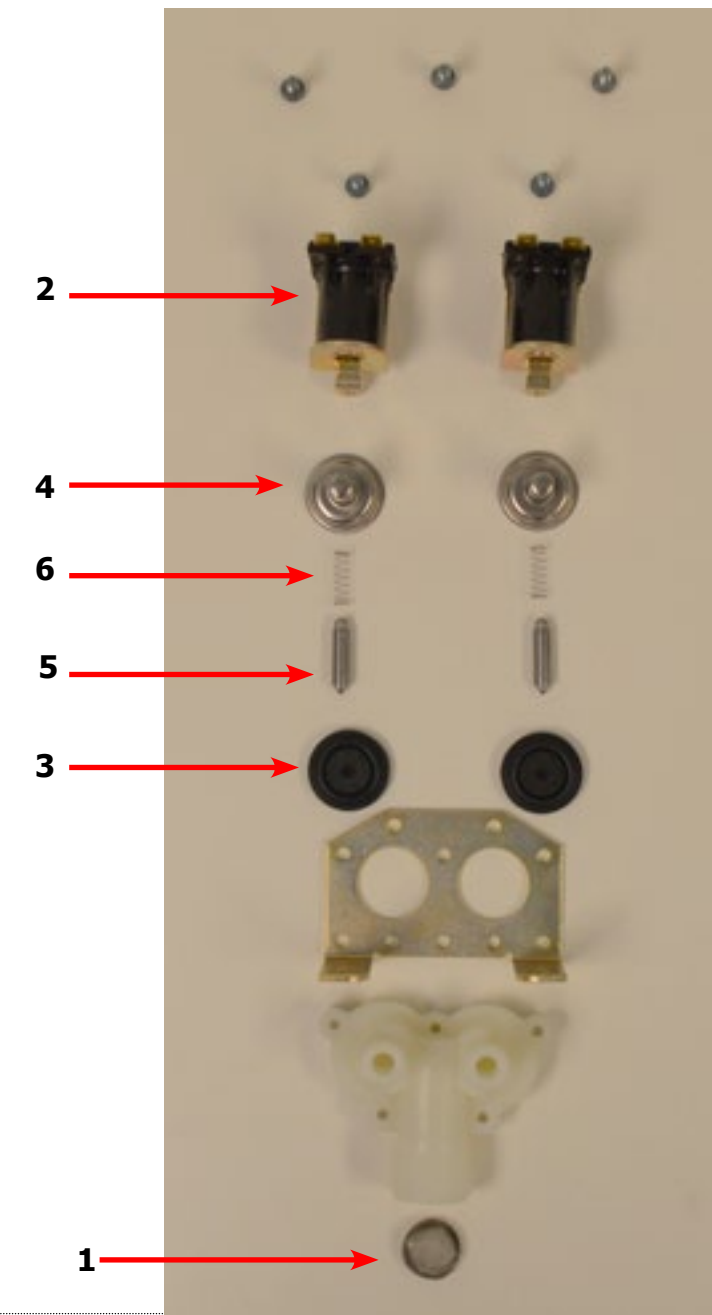
| | | |
|-----|-----|---|
| ON | ON | 25¢, \$1(OLD & NEW), \$2(OLD & NEW), .880 AND .990 TOKEN NORMAL SENSITIVITY |
| OFF | OFF | |
| ON | ON | \$1(OLD & NEW), \$2(OLD & NEW), .880 AND .990 TOKEN NORMAL SENSITIVITY |
| OFF | OFF | |
| ON | ON | 25¢, \$2(OLD & NEW), .880 AND .990 TOKEN NORMAL SENSITIVITY |
| OFF | OFF | |
| ON | ON | 25¢, \$1(OLD & NEW), .880 AND .990 TOKEN NORMAL SENSITIVITY |
| OFF | OFF | |
| ON | ON | 25¢, .880 AND .990 TOKEN NORMAL SENSITIVITY |
| OFF | OFF | |
| ON | ON | \$2(OLD & NEW), .880 AND .990 TOKEN NORMAL SENSITIVITY |
| OFF | OFF | |
| ON | ON | \$1(OLD & NEW), .880 AND .990 TOKEN NORMAL SENSITIVITY |
| OFF | OFF | |
| ON | ON | 25¢, \$1(NEW ONLY), \$2(NEW ONLY), .880 AND .990 TOKEN NORMAL SENSITIVITY |
| OFF | OFF | |
| ON | ON | \$1(NEW ONLY), \$2(NEW ONLY), .880 AND .990 TOKEN NORMAL SENSITIVITY |
| OFF | OFF | |
| ON | ON | 25¢, \$2(NEW ONLY), .880 AND .990 TOKEN NORMAL SENSITIVITY |
| OFF | OFF | |
| ON | ON | 25¢, \$1(NEW ONLY), .880 AND .990 TOKEN NORMAL SENSITIVITY |
| OFF | OFF | |
| ON | ON | \$2(NEW ONLY), .880 AND .990 TOKEN NORMAL SENSITIVITY |
| OFF | OFF | |
| ON | ON | \$1(NEW ONLY), .880 AND .990 TOKEN NORMAL SENSITIVITY |
| OFF | OFF | |

25¢ – one pulse on left washer/dryer input
 \$1 – one pulse on right washer/dryer input
 \$2 – two pulses on right washer/dryer input
 .880 TOKEN – one pulse on right washer/dryer input
 .990 TOKEN – one pulse on right washer/dryer input

| Key | Description | T350 | T450 | QTY |
|-----|------------------------------------|--------------|--------------|-----|
| 1 | Circuit Breaker | 5198-211-002 | 5198-211-002 | 1 |
| 2 | Transformer 200/250V-24V | 8711-004-004 | 8711-004-004 | 1 |
| * | Hose Inlet | 9990-027-014 | 9990-027-014 | 2 |
| * | Harness, Power Terminal Block | 9627-747-006 | 9627-747-006 | 1 |
| * | Harness Main, V1.5 | 9627-914-001 | 9627-914-001 | 1 |
| * | Harness, Coin Acceptorless | 9627-895-001 | 9627-895-001 | 1 |
| * | Wiring Label , Schematic & Diagram | 9506-887-001 | 9506-888-001 | 1 |
| * | Owners Booklet | 8514-296-001 | 8514-296-001 | 1 |



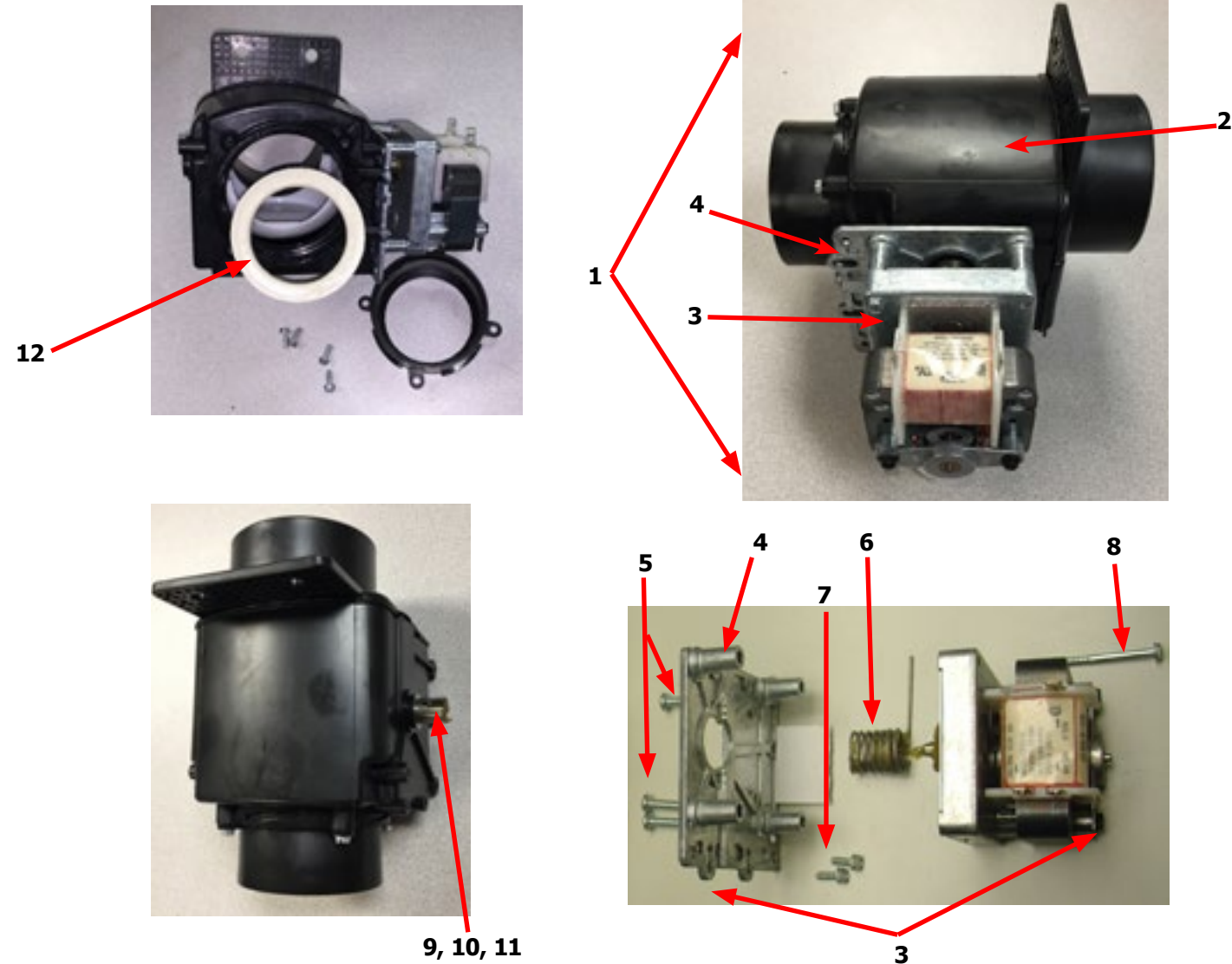
Water Valve Assy # by Model 50Hz.



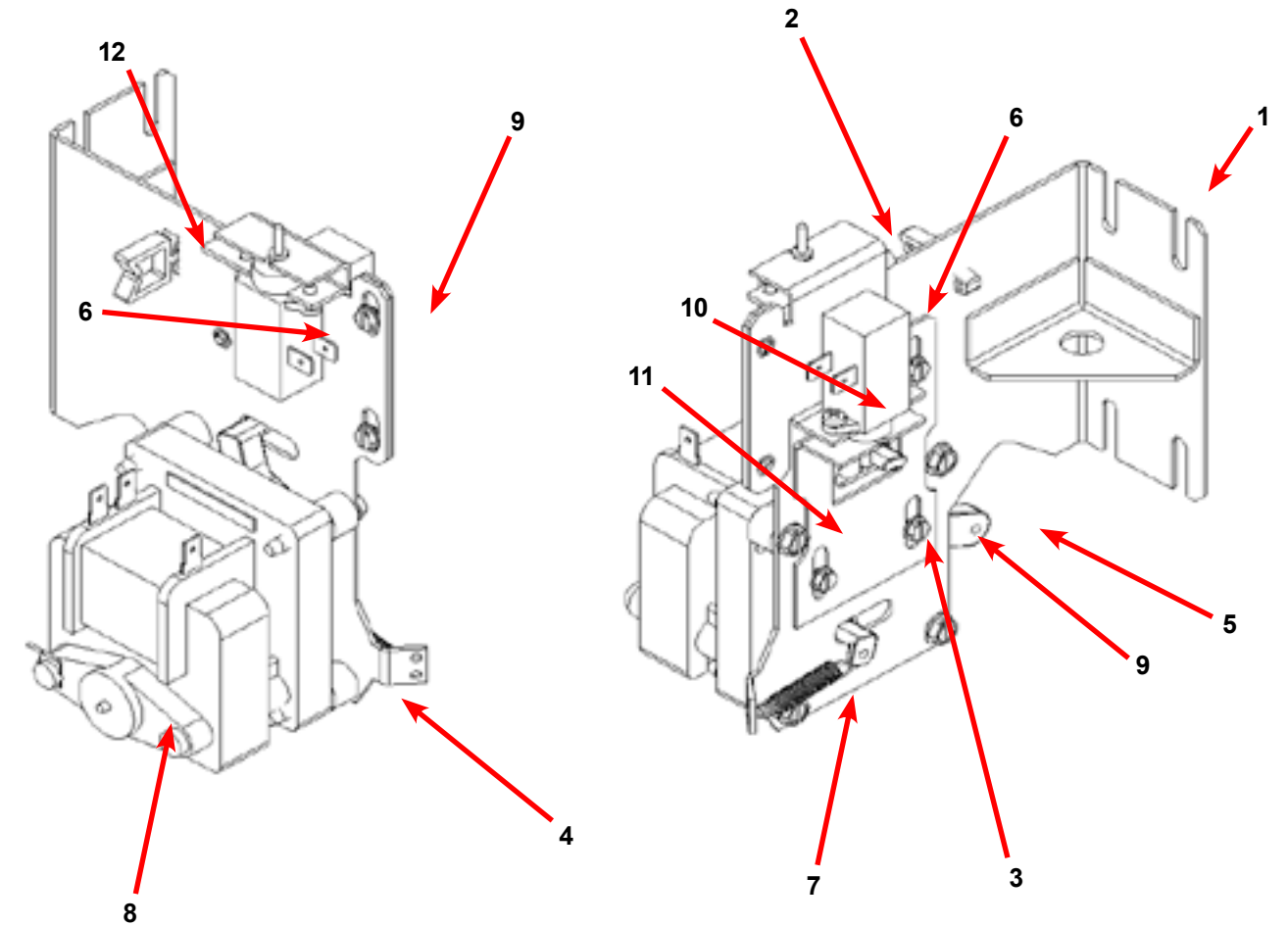
| Key | Description | T350 | T450 | QTY |
|-----|--|--------------|--------------|-----|
| * | Valve, Water Inlet (includes 1 thru 6) | 9379-183-013 | 9379-183-013 | 2 |
| 1 | Screen, Inlet end of valve | 9555-056-001 | 9555-056-001 | 2 |
| 2 | Coil Assy., 24V Invensys | 9089-017-004 | 9089-017-004 | 2 |
| 3 | Diaphragm Invensys (Viton) | 9118-049-002 | 9118-049-002 | 2 |
| 3 | Diaphragm Invensys (EPDM) | 9118-049-001 | 9118-049-001 | 2 |
| 4 | Guide, Solenoid Invensys | 9211-021-002 | 9211-021-002 | 2 |
| 5 | Armature Invensys | 9015-008-001 | 9015-008-001 | 2 |
| 6 | Spring, Armature Invensys | 9534-298-001 | 9534-298-001 | 2 |

Drain Valve Group Part # by Model 50Hz.

| Key | Description | T350 | T450 | QTY |
|-----|---|--------------|--------------|-----|
| 1 | Valve, Drain (includes #2 thru #11) | 9379-199-002 | 9379-202-002 | 1 |
| 2 | Body, Valve (w/ball) | 9064-068-002 | 9064-072-001 | 1 |
| 3 | Motor & Gear Train (complete) | 9914-137-019 | 9914-137-022 | 1 |
| 4 | Plate, Motor Mtg | 9452-538-001 | 9452-538-001 | 1 |
| 5 | Screw | 8639-994-001 | 8639-994-001 | 3 |
| 6 | Spring, Drive | 9534-340-001 | 9534-339-001 | 1 |
| 7 | Screw | 9545-054-001 | 9545-054-001 | 2 |
| 8 | Screw | 9545-054-002 | 9545-054-002 | 1 |
| 9 | Seal, V Packer | 9532-134-001 | 9532-134-001 | 2 |
| 10 | Washer | 8641-584-001 | 8641-584-001 | 1 |
| 11 | Pin, Main Drive | 9451-196-001 | 9451-196-001 | 1 |
| * | Plate (spacers needed for replacement motor mtg. plate) | 9538-149-001 | 9538-149-001 | 4 |
| 12 | Kit - Seal Replacement | 9732-327-001 | 9732-327-001 | 1 |



Door Lock Motor Assy # by Model 50Hz.



| Key | Description | T350 | T450 | QTY |
|-----|---|--------------|--------------|-----|
| * | Actuator Assembly (Includes 1-10, Rod NOT included) | 9892-015-002 | 9892-015-002 | 1 |
| 1 | Bracket Assy, Slide Lock Actuator | 9985-190-001 | 9985-190-001 | 1 |
| 2 | Bracket Assy, Slide - Unlock | 9985-189-001 | 9985-189-001 | 1 |
| 3 | Bracket Slide Lock | 9029-204-001 | 9029-204-001 | 1 |
| 4 | Spacer, Plastic | 9538-157-021 | 9538-157-021 | 4 |
| 5 | Arm - Door Lock | 9001-063-001 | 9001-063-001 | 1 |
| 6 | Thermoactuator - Door Lock Relay 24V | 9586-001-003 | 9586-001-003 | 2 |
| 7 | Spring - Extension | 9534-350-001 | 9534-350-001 | 1 |
| 8 | Motor & Gear Assembly 24V | 9914-137-014 | 9914-137-014 | 1 |
| 9 | Screw -Hxwshrdslsems, 6-32 x 3/16 | 9545-044-003 | 9545-044-003 | 6 |
| 10 | Cross Recessed PAn Hd Tapping screw | 9545-031-011 | 9545-031-011 | 4 |
| 11 | Screw Pnhdcr, 10-32 UNFx0 .75 | 9545-012-027 | 9545-012-027 | 4 |
| 12 | Standoff-Wire Saddle | 9527-007-001 | 9527-007-001 | 1 |
| * | Rod, Door Lock | 9497-225-011 | 9497-225-012 | 1 |
| * | Harness, Door Lock/Drain, P17 | 9627-796-001 | 9627-796-001 | 1 |

T-450 Express: Vended 230/50/1 Voltage Diagram

