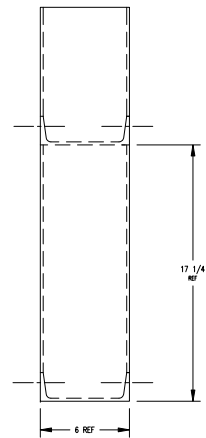
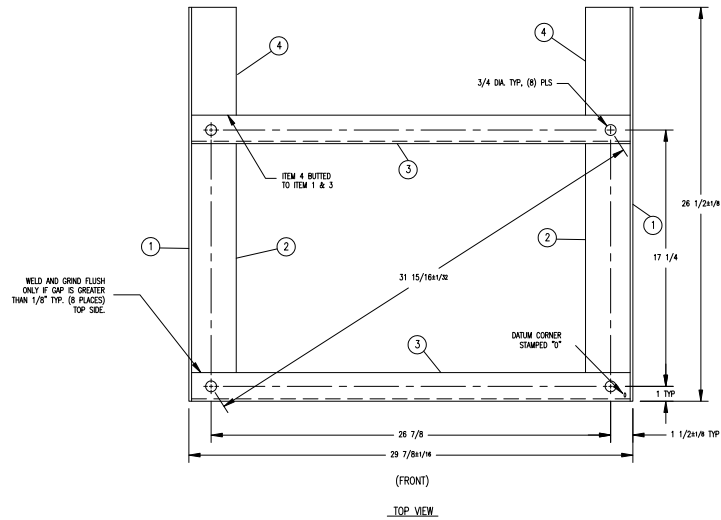


1 2 3 4 5 6 7 8 9 10 11 12 13 14 15 16 17 18 19 20 21 22 23 24 25 26 27 28 29 30 31

A  
B  
C  
D  
E  
F  
G  
H  
I  
J  
K  
L  
M  
N  
O  
P  
Q  
R



QTY	PART NO.	ITEM	DESCRIPTION
4		FILLER- REAR	4 3/16 X 3 HRPO
2		CHANNEL-FRT/RR	3 C6 X 8.28/FT CHANNEL
4		FILLER-FRONT	2 3/16 X 3 HRPO
2		SIDE-R/L	1 3/16 X 6 X 26 1/2 HRPO

**NOTES**

1. METHOD OF ASSY- ARC WELD
2. APPLY (1) COAT BLACK PRIMER
3. PART TO BE FLAT WITHIN 1/8"
4. ZERO PLANES ARE LOCATED OFF FATHTEST PROTUDING EDGE.
5. FILLER PALTES TO BE FLUSH TO 1/16" RECESSED FROM TOP SURFACE.

REV.	DATE	BY	CHKD.	DESCRIPTION
1				ISSUED FOR PRODUCTION
2				REVISION

9945-123-001		BASE ASSY-FRAME, 1 PLACE	
PART NO.		DESCRIPTION	
<b>DEXTER LAUNDRY, INC.</b>			
FAIRFIELD, IOWA			
NAME		BASE ASSY-FRAME, 1 PLACE	
MATERIAL		USED ON	
FINISH		FILE NO.	
SPECS.		REFERENCE	
DRAWN		DWG. NO.	
DATE		9945-123	