



DEXTER[®]
LAUNDRY

**USE THE BLUE TABS LOCATED ON THE
RIGHT AND LEFT SIDES OF THE FOLLOWING
DOCUMENT TO ADVANCE TO EACH SECTION.**

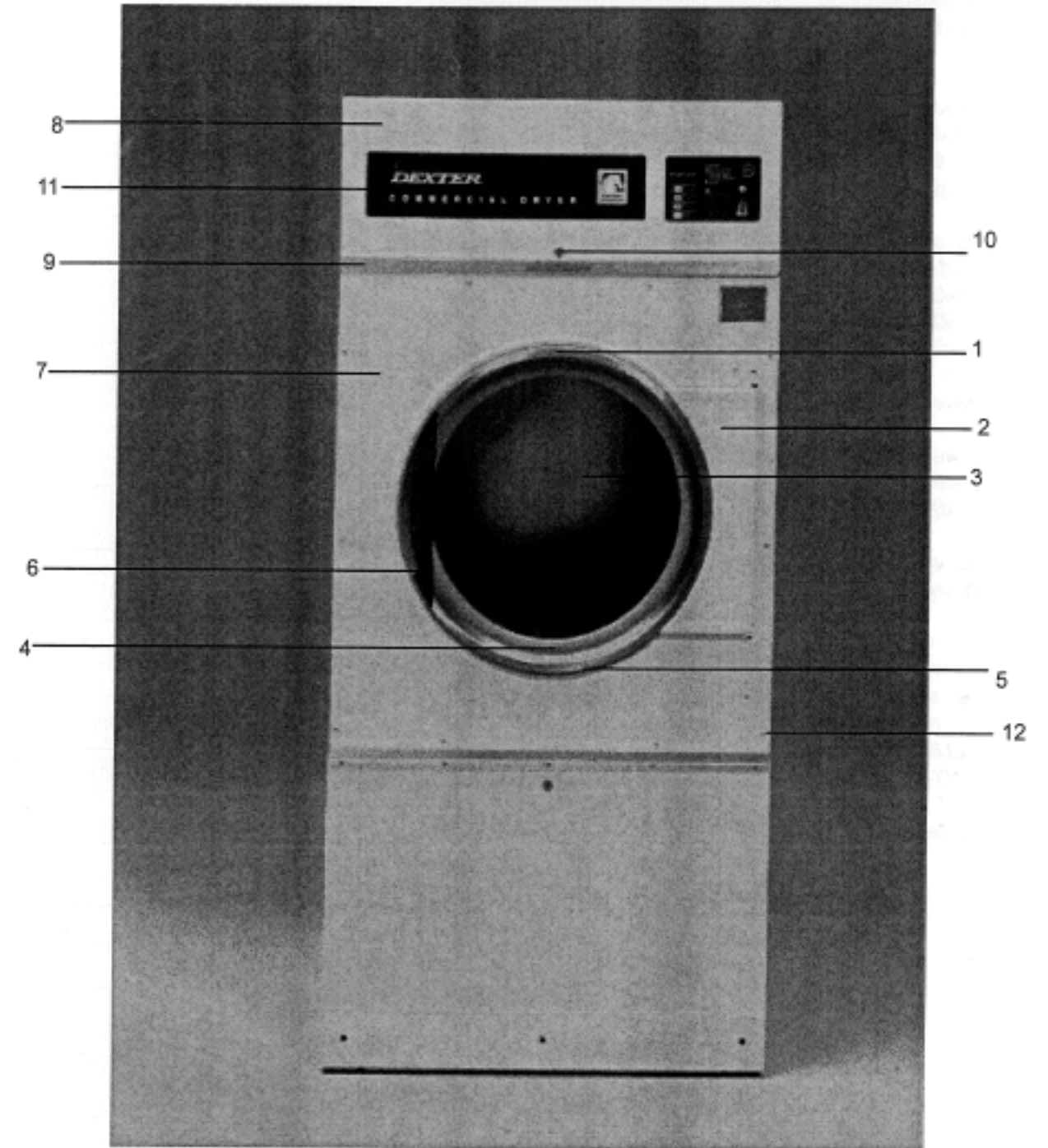
Kits, Assemblies, & Common Parts

Coin Acceptor Components	Part Number
Mechanical Coin Acceptor	9021-002-016
Loading Door Components	Part Number
Door Handle	9244-082-001
Door Close Switch	9539-461-001
Electrical Components	Part Number
Transformer, Control	8711-007-001
Controls	9471-011-002
Heating Circuit Components	Part Number
Ignition Control Module	9857-116-003
Ignition Electrode Assembly	9875-002-003
Thermostat, Hi-Limit	9576-203-002
Thermostat, Overtemp	9576-207-006
Fuseholder	9200-001-002
Fuse 1.5 amp	8636-018-001
Airflow Switch	9539-461-009
Cabinet Components	Part Number
Cleanout Duct Assembly 8"	9973-034-001

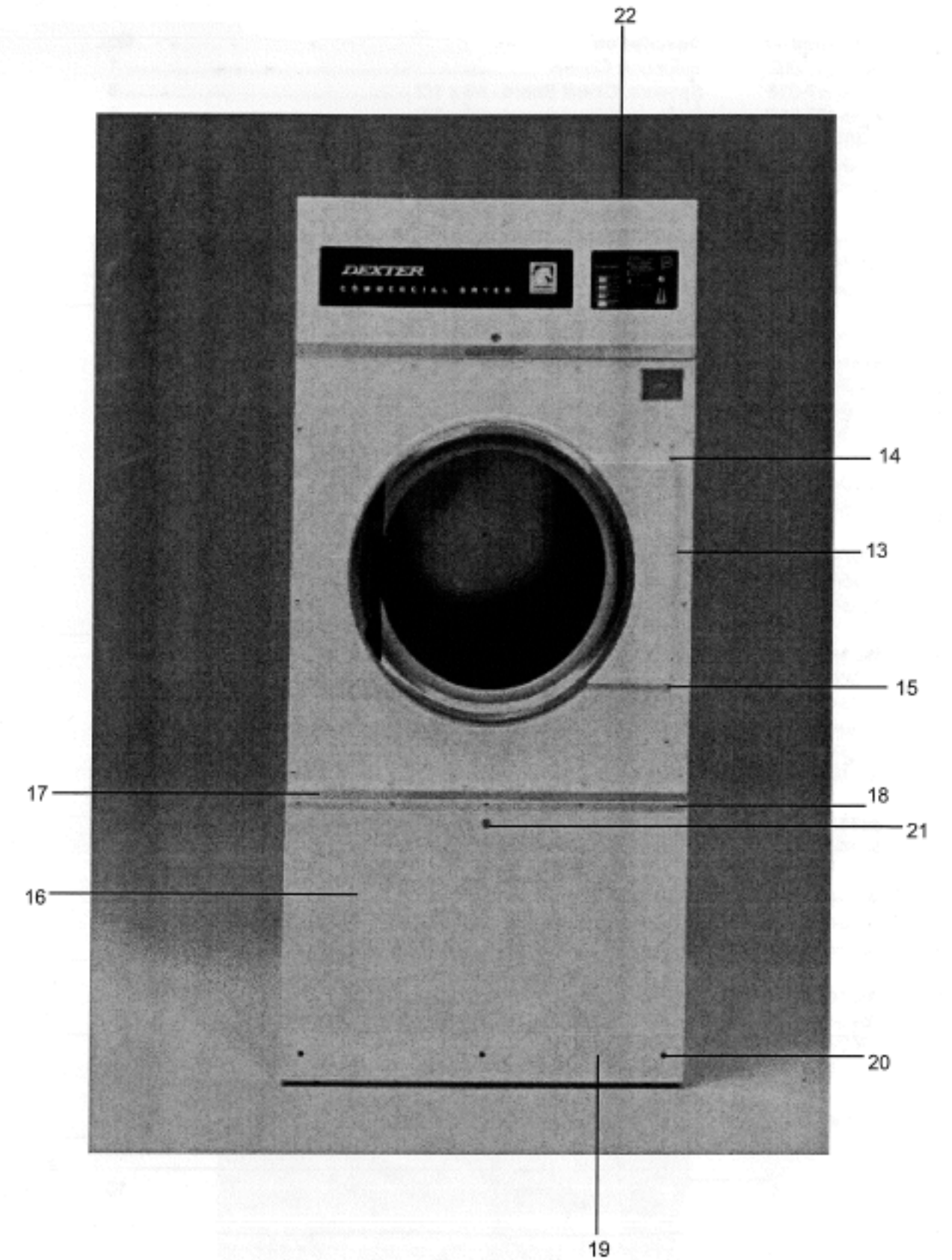
Section 6: Parts Data

Cabinet Group

Key	Part Number	Description	Qty
*	9960-256-021	Door Assy., Loading Complete -White	1
*	9960-256-025	Door Assy., Loading Complete - SS	1
*	9960-256-022	Door Assy., Loading complete -Almond	1
1	9960-255-007	Door Ring, Loading	1
2	9982-280-002	Plate Assy., Hinge - White	1
2	9982-280-011	Plate Assy., Hinge - SS	1
2	9982-280-005	Plate Assy., Hinge - Almond	1
*	9545-012-015	Screw, Hinge to Door 10-32 x 3/8"	4
*	8640-413-002	Nut, Hinge to Door#10-32 UNF	4
3	9212-002-003	Glass, Door	1
4	9206-164-009	Gasket, Glass	1
*	9548-117-000	Support, Door Glass (inside gasket)	1
5	9206-420-002	Gasket, outer Rim	1
6	9244-082-001	Handle, Loading Door	1
*	9545-018-017	Screw, Handle 1/4"-13 x 11/4"	2
*	9531-033-001	Stud, Door Catch	1
*	8640-413-001	Nut, Hex	1
*	8640-413-003	Nut , Acorn # 10-32	1
*	9086-015-002	Catch, Loading Door	1
7	9989-460-006	Panel Assy., Front - White	1
7	9989-460-004	Panel Assy., Front - SS	1
7	9989-460-007	Panel Assy., Front -Almond	1
*	9942-027-008	Coin VaultAssy., White	1
*	9942-027 006	Coin VaultAssy., Gray	1
*	9942-027-007	Coin VaultAssy.,Almond	1
8	9108-100-004	Door, Upper Service - SS	1
8	9108-100-006	Door, Upper Service- White	1
8	9108-100-007	Door, Upper Service - Almond	1
9	9578-090-002	Trim, Door-Upper Service	1
*	6292-006-006	Key (only) (FJWCC)	1
10	8650-006-003	Lock w/ nut, Upper Service Door	1
*	8638-211-001	Rivet, Drive	2
*	8641-581-005	Washer, Flat 3/16"	2
*	9548-243-002	Support, Upper Door	1
11	9412-083-002	Nameplate, Commercial Dryer	1
12	9545-012-003	Screw, Chrome 10-32 x 1/2"	4
*	8641-436-004	Washer, Fiber	4
*	8641-582-019	Lockwasher # 10	10
*	8640-399-001	Nut, Spring U type 1OZ	6

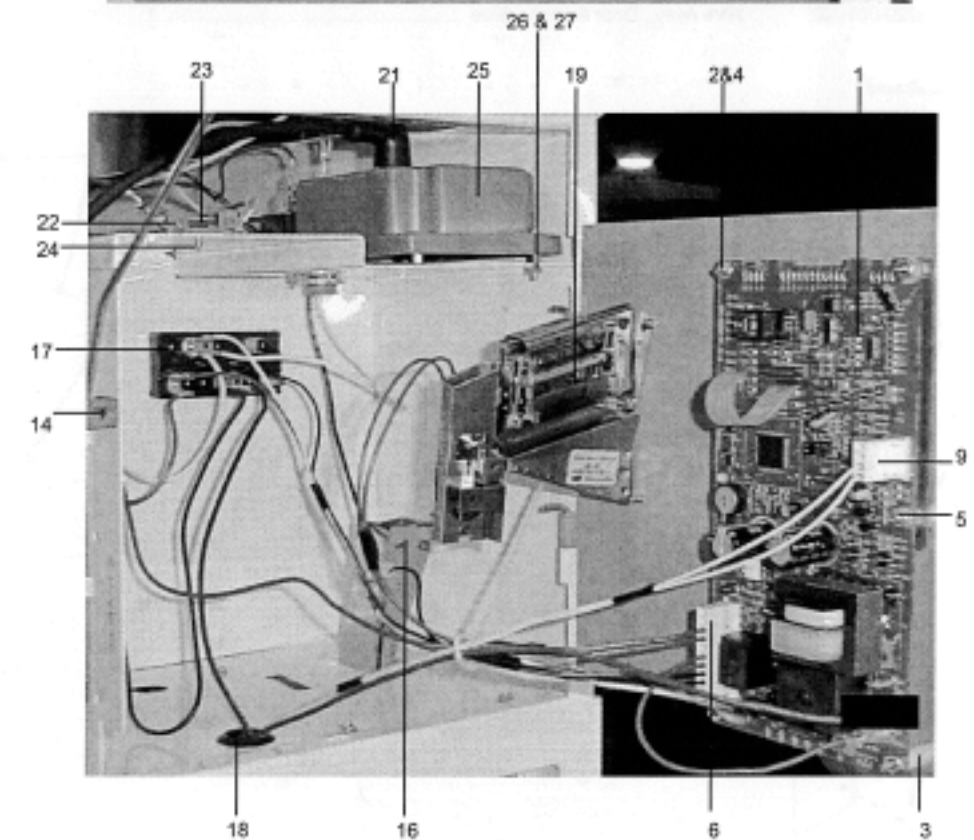
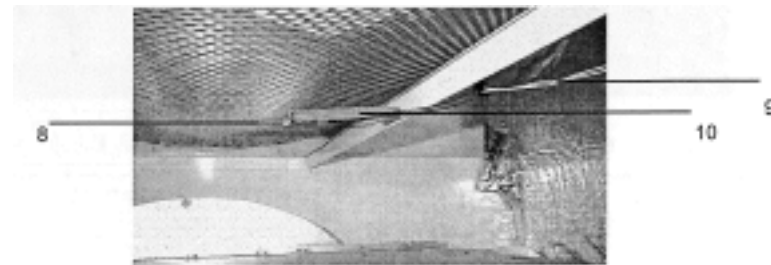


Key	Part Number	Description	Qty
13	9544--047-002	Strap, Hinge- White	1
13	9544-047-007	Strap, Hinge - Gray	1
13	9544-047-005	Strap, Hinge - Almond.	1
*	9545-008-008	Screw, Hinge to Panel 10T-32 x 1/2"	4
14	9545-052-001	Screw, Door to Hinge Strap (special)	1
15	8641-436-003	Washer, Fiber/ Plastic	1
16	9960-261-001	Door Assy., Lower Service -.ss	1
16	9960-261-003	Door Assy., Lower Service - White	1
16	9960-261-004	Door Assy., Lower Service - Almond.	1
17	9578 088-001	Trim, Door - Lower Service	1
18	9545-008-021	Screw,Pn Hd Cr., #10Bx3/8	5
19	9578-084-002	Trim, Kick- Lower Service Door	1
*	9435-004-010	Overlay- Trfm, Kick	1
20	9545-008-010	Screw, Tr Hd Cr-#10x1/2 Blk.	3
21	8650-00 003	Lock w/nut, Lower Service Door	1
*	6292-006-006	Key (only), FJWCC	1
*	8544-005-000	Leg, Leveling	4
*	9049-074-001	Baffle, Cabinet- Left	1
*	9049-074-002	Baffle, Cabinet- Right	1
*	9545-008-003	Screw, #10x1/2 TEK	8
22	9074-273-001	Cover, Cabinet	1
*	9545-008-024	Screw	10
*	9277-049-001	Insulation, Front Panel (Top)	1
*	9277-049-0{2}	Insulation, Front Panel (Bottom)	1
*	9277-051-001	Insulation, Side Panels	4
*	9277-050-003	Insulation, Lower Service Door	1
*	9277-047-001	Insulation, Tqp Left Cabinet Side (byburner housing)	1
*	9277-047-002	Insulation, Upper Service Door	1



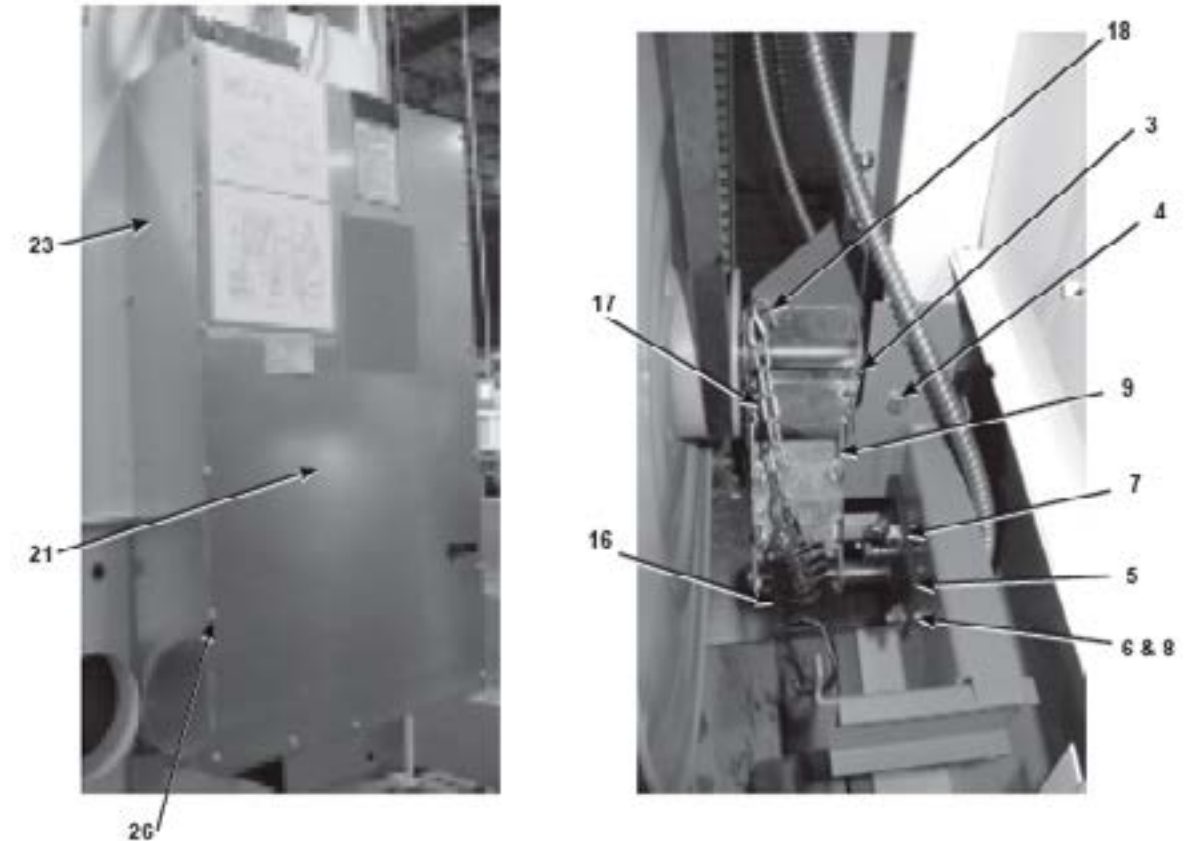
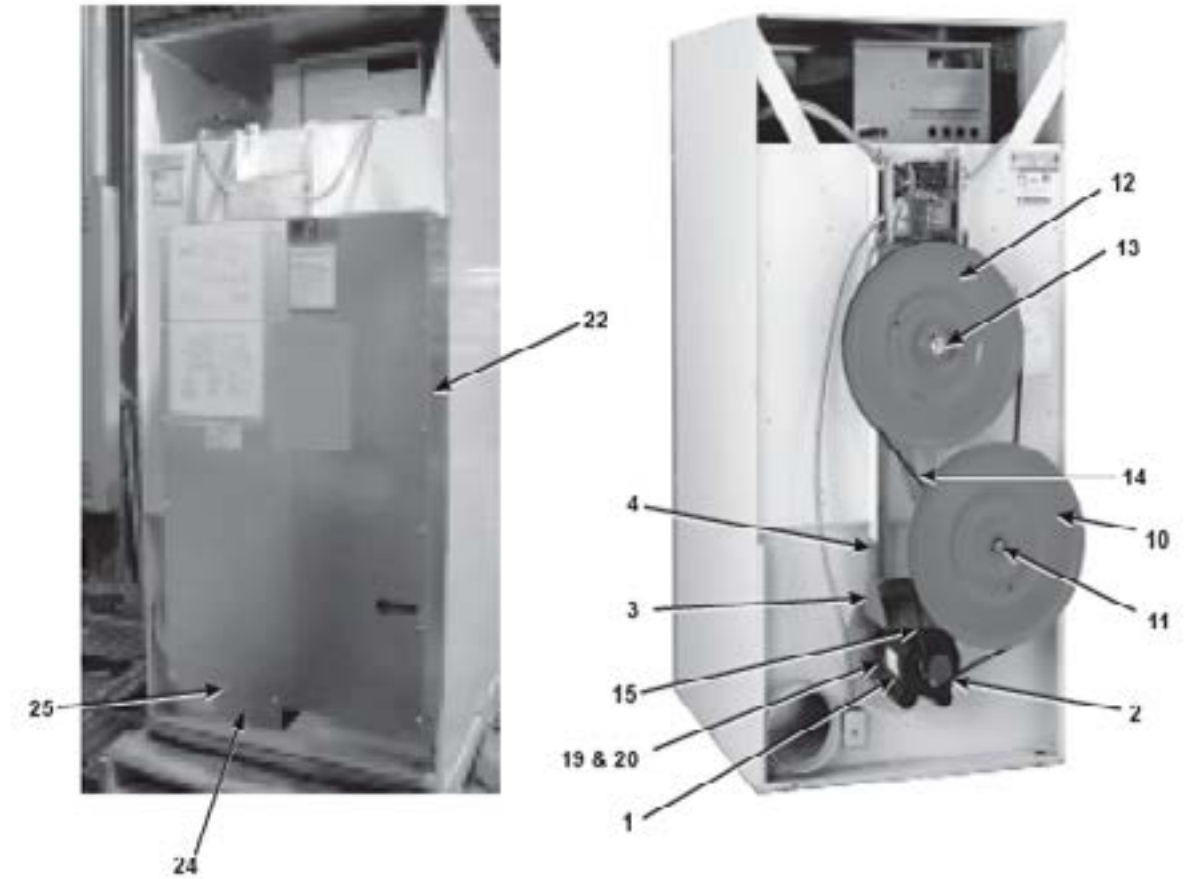
Front Control Housing Group

Key	Part Number	Description	Qty
1	9471-011-002	Electronic Control	1
2	9538-157-016	Spacers, Circuit Board -#6 x 1/2	3
3	9538-157-017	Spacers, Circuit Board - #6 x 7/8	3
4	8640-411-001	Nut, Circuit Board	4
5	8640-411-003	Nut, Keps - Circuit Board (for grounding)	1
6	9627-651-001	Harness, Wiring (Electronic Control)	1
7	9801-077-001	Switch Assy., Membrane	1
8	9501-004-002	Sensor, Temperature	1
9	9627-679-001	Harness, Temperature Sensor	1
10	9029-111-001	Bracket, Sensor Mounting	1
11	9982-305-002	Plate Assy., Electronic Control	1
12	9451-146-005	Pin, Hinge - Control Plate Assy	2
13	9545-045-002	Screw, Mtg. (left edge)	1
14	9039-981-001	Nut, Angled Spring	1
15	8502-640-004	Label, Control Instruction/ Warning	1
16	9940-013-001	Chute Ass'y Coin	1
*	9545-008-024	Screw, Coin Chute Mtg	1
17	9897-026-001	Terminal Block	1
*	9545-031-004	Screw Terminal Block Mtg	2
18	9053-067-001	Bushing, Door Switch Wires	1
19	9021-002-016	Coin Acceptor Complete (includes #20)	1
*	9732-126-001	Switch,Coin	1
20	9063-004-001	Bail, Coin Return	1
*	8640-406-009	Nut, Bail mtg	2
*	9545-025-021	Screw, Acceptor Mtg	2
*	8641-573-012	Lockwasher	2
21	9631-403-003	Wire Ass'y, High Voltage	1
*	9627-711-001	Harness, Low Voltage Ignition	1
22	9054-045-001	Fuseholder	1
23	8636-018-004	Fuse, 2.5 amps	1
24	9545-031-005	Screw #6B x 3/8	1
25	9857-116-002	Control, Ignition	1
26	9545-044-002	Screw 6-32 x 1"	2
27	8640-411-003	Nut, Hex Keps #6-32	2



Drive Group

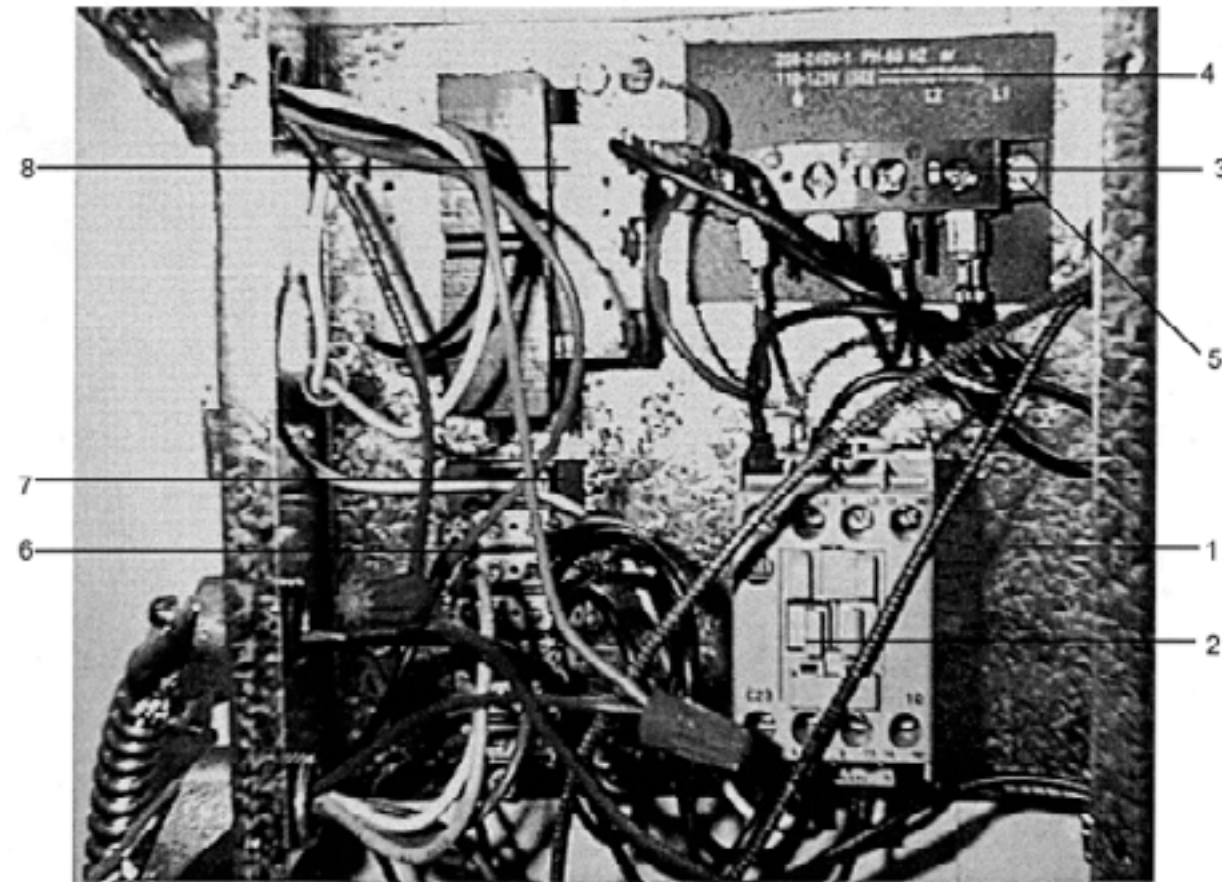
Key	Part Number	Description	Qty
1	9376-299-002	Motor, Drive	1
*	9732-205-008	Motor Replacement Kit	1
*	9545-014-004	Screw, Hx 5/16-18 x 5/8"	4
*	8640-400-003	Nut 5/16-18	4
2	9453-157-001	Pulley, Motor	1
*	9545-028-013	Screw, Set	2
3	9991-054-002	Support Assembly, Motor	1
4	9545-029-005	Screw 3/8-16 x 1 1/4"	4
4	8640-415-004	Nut 3/8-16	4
5	9991-053-001	Support Assembly, Intermed. Pulley	1
6	9545-029-010	Bolt, Rd Hd, 3/8-16 x 1 1/4"	3
7	9545-029-003	Screw, 3/8-16 x 1 1/2"	1
8	8640-415-004	Nut 3/8-16	3
*	8641-581-035	Washer, Flat	4
9	9861-024-003	Arm Assembly-Tension	1
*	8641-581-035	Washer, Flat	1
*	9487-200-006	Ring-Retaining	1
10	9908-042-006	Pulley Assembly, Intermediate - w/bearings	1
11	9036-159-007	Bearing, Ball-Idler Pulley	2
*	9538-173-002	Spacer, Bearing	1
12	9908-043-002	Pulley Driven	1
*	9487-234-001	Ring, Tolerance	1
13	8641-581-026	Washer, Flat	1
13	8641-582-016	Lockwasher	1
13	9545-017-009	Screw, Hx Cap	1
14	9040-077-004	Belt, Final Drive	1
15	9040-077-003	Belt, Motor Drive	1
16	9534-151-000	Spring, Belt Tension	1
17	9099-012-002	Chain, Spring Tension	1
18	9248-022-002	Hook, Tension	1
21	9208-067-001	Guard, Drive	1
22	9454-685-001	Panel, Drive Guard, RH	1
23	9454-686-001	Panel, Drive Guard, LH	1
24	9550-175-001	Shield, Motor	1
25	9545-008-003	Screw	2
26	9545-008-024	Screw (to attach to guards above)	24



Rear Control Group

Key	Part Number	Description	Quantity
1	9041-081-001	Box, Control.....	1
*	9074-280-001	Cover, Control Box.....	1
*	9545-008-024	Screw.....	4
2	5192-295-011	Relay.....	1
*	9545-045-007	Screw, #8Bx 3/4.....	2
3	9897-035-002	Terminal Block Assembly, Power.....	1
4	9558-029-003	Strip, Termin I Marker.....	1
5	9545-045-002	Screw, #8Bx 1-12.....	2
6	9897-034-001	Terminal Block Assembly.....	1
7	9558-027-001	Strip, Terminal Marker.....	1
*	8639-621-007	Screw, Hx #10-32 x 1/2 (ground).....	1
*	8641-582-006	Lockwasher, Ex Tooth # 10.....	1
8	8711-007-001	Transformer, Control.....	1
*	9545-012-009	Screw, Hx. #10-32x1/2.....	2
*	8640-413-002	Nut, Keps - #10-32.....	2

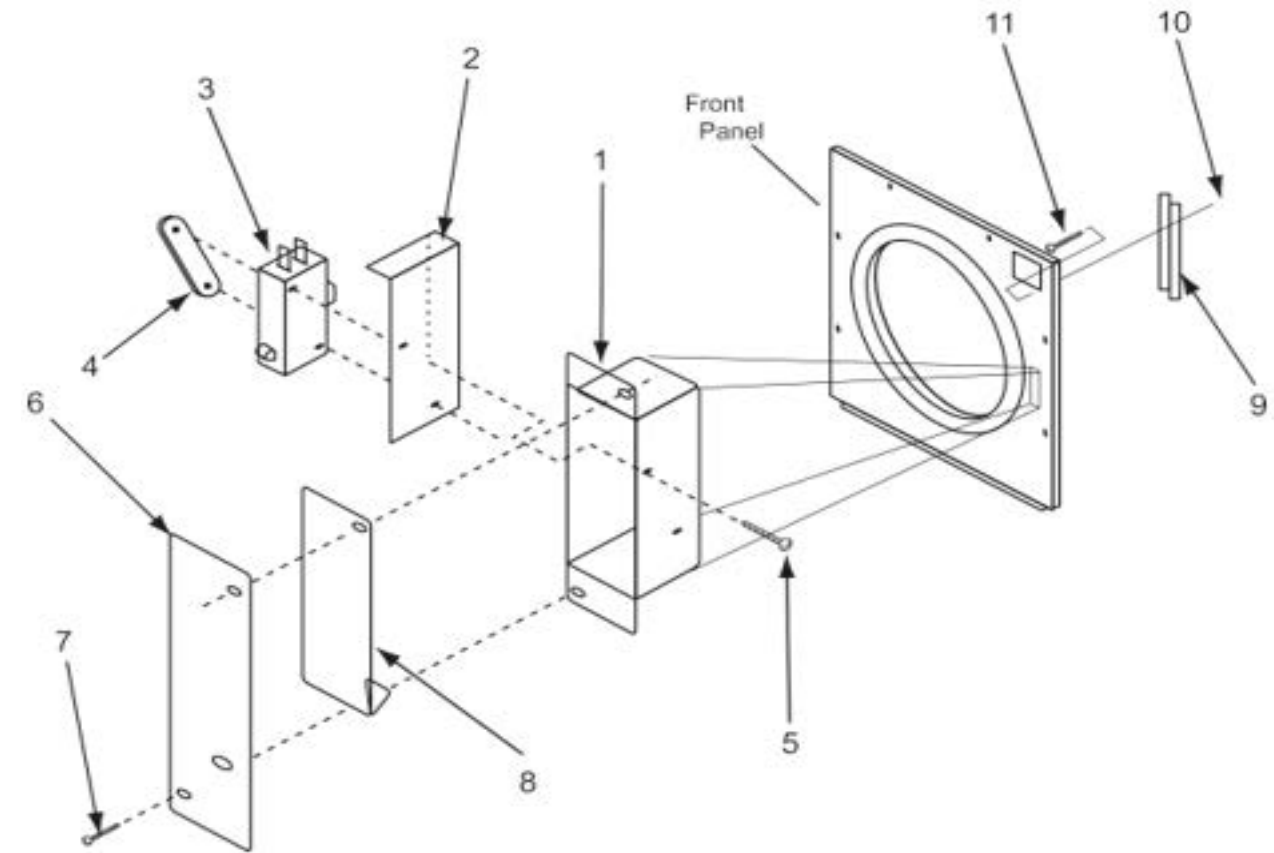
* Not Illustrated



Door Switch Group

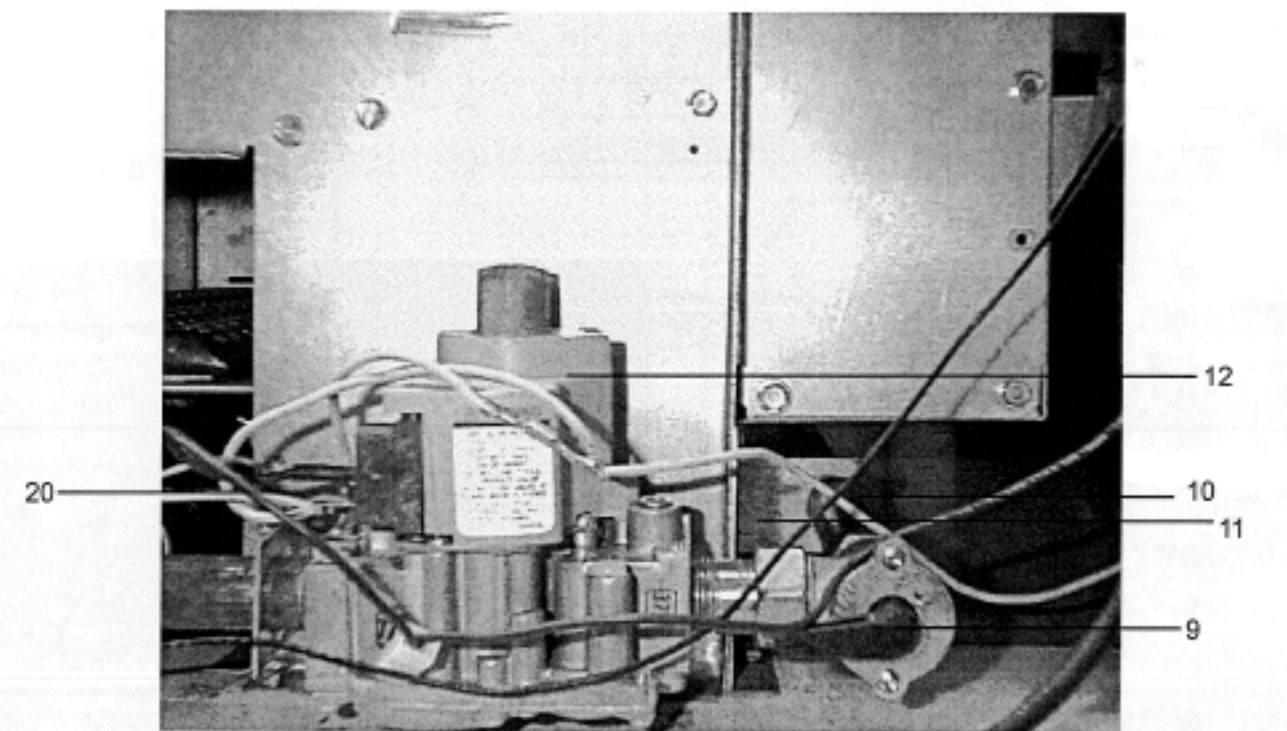
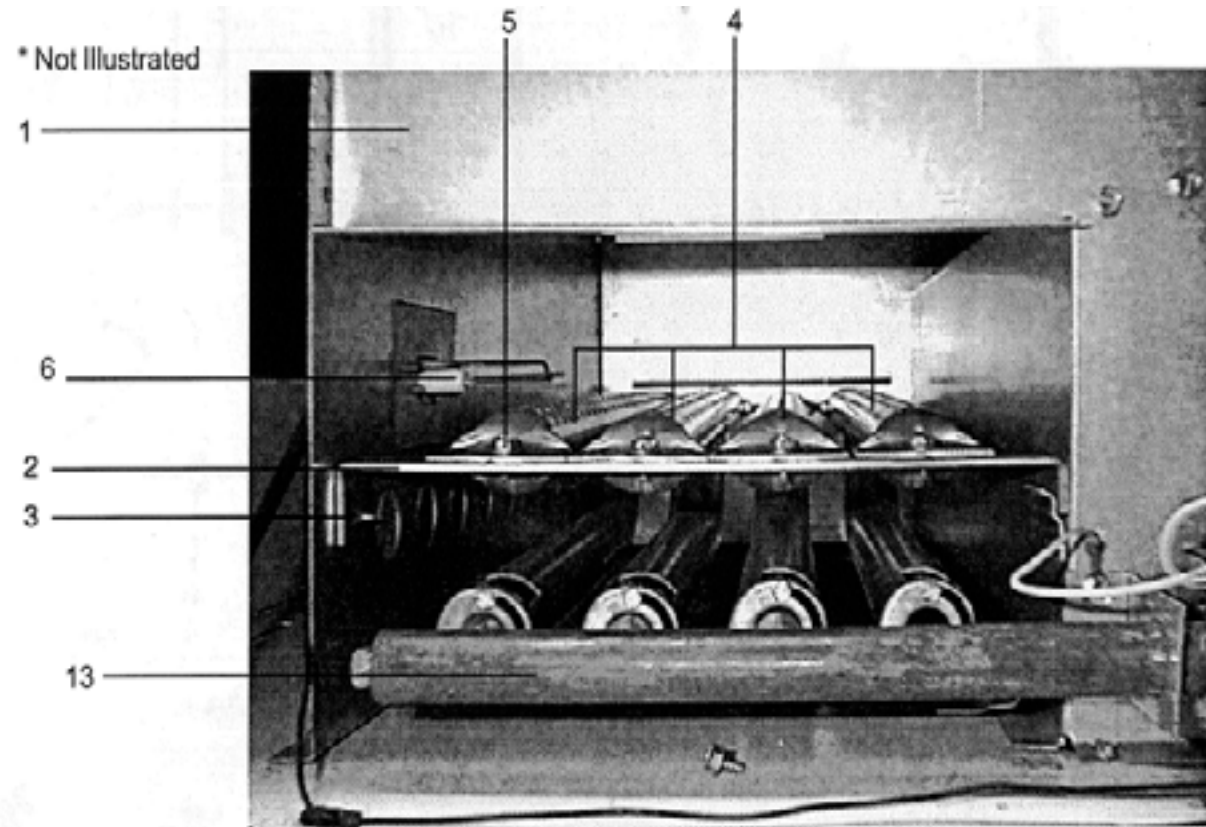
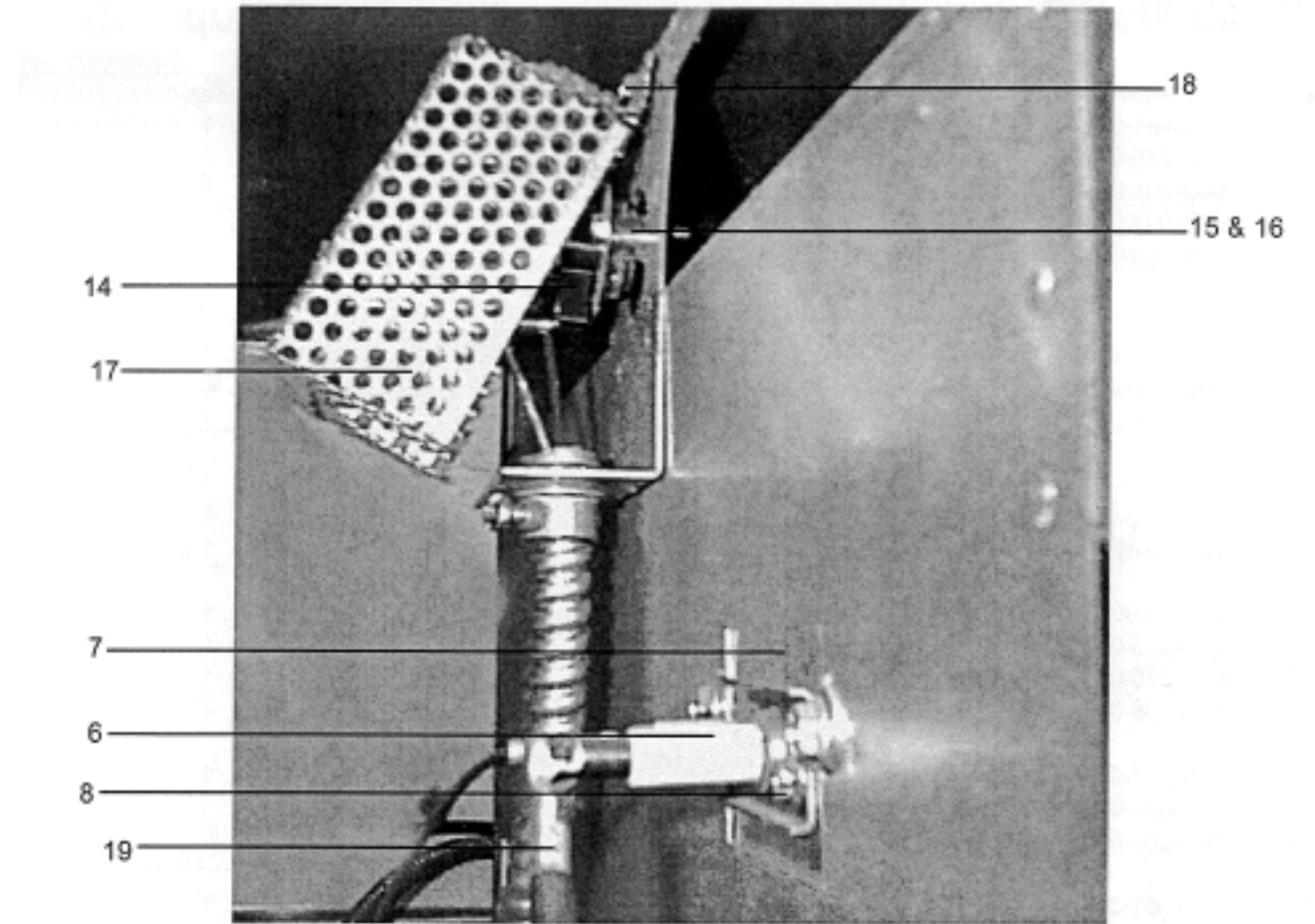
Key	Part Number	Description	Quantity
1	9041-076-001	Box, Door Switch.....	1
2	9550-159-001	Shield, Door Switch.....	1
3	9539-461-007	Switch, Door.....	1
4	8640-401-001	Nut, Special Twin #4-40.....	1
5	9545-020-001	Screw, Pn Hd Sl.#4-40x5/8.....	2
6	9074-255-001	Cover, Switch Box.....	1
7	9545-008-020	Screw, Box Cover 10 AB x 3/4".....	2
8	9008-004-001	Actuator, Switch.....	1
9	6068-041-001	Conduit Special.....	1
10	9545-012-003	Screw. 10-32 x 1/2".....	1
*	8641-436-000	Washer, Fiber.....	1
11	8640-413-004	Nut, ElasticStop 10 -32.....	1

* Not Illustrated



Burner Housing Group

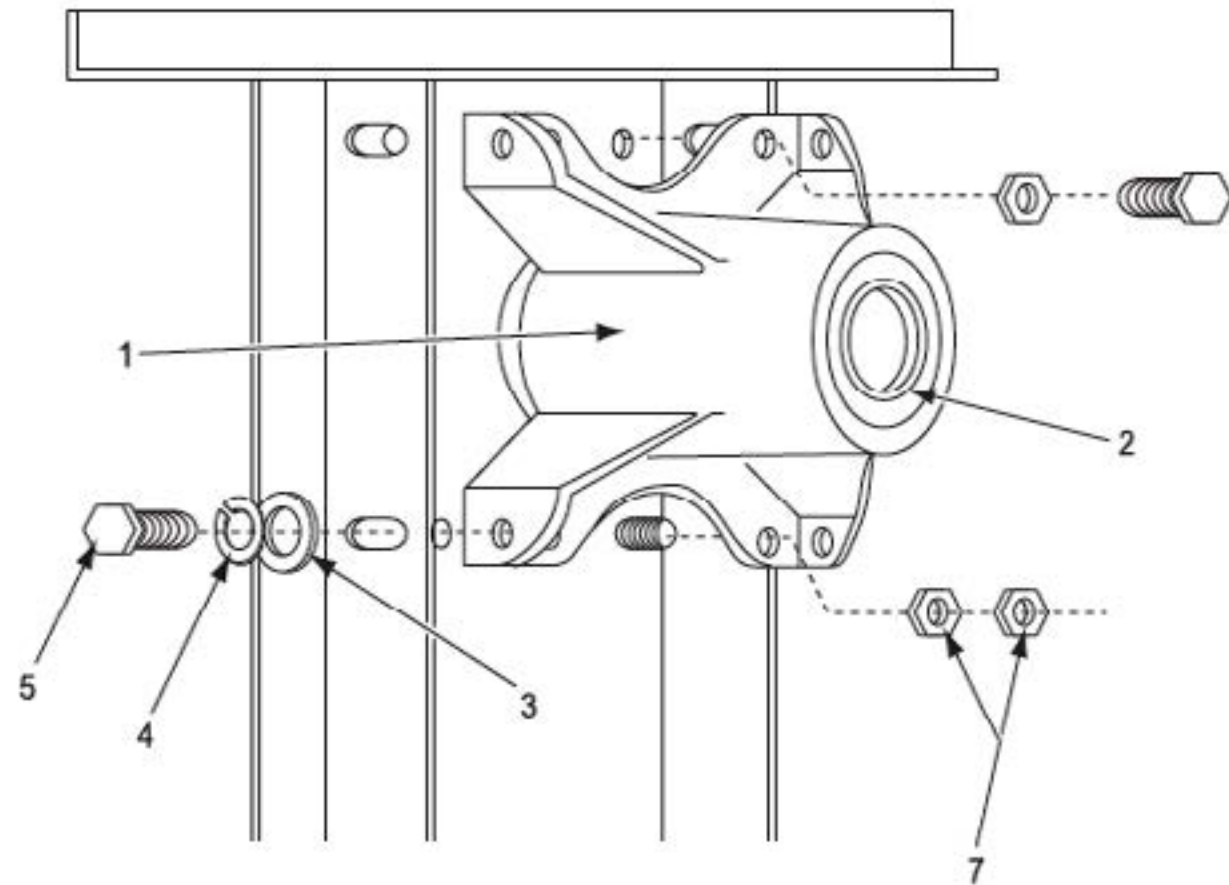
Key	Part Number	Description	Quantity
1	9803-195-001	Housing Assembly, Burner	1
*	9545-008-024	Screw	4
2	9548-280-001	Support, Front Burner	1
3	9545-008-008	Screw 10T-32 x 1/2"	1
4	9048-018-001	Burner, Main	4
5	9545-008-008	Screw 10T-32 x 1/2"	4
6	9875-002-002	Electrode, Ignition	1
7	9452-645-001	Plate, Electrode Mtg	1
8	9545-045-001	Screw, Electrode Mtg 8B x 11/4"	2
9	9379-164-002	Valve, Gas Shut-Off w/ brass union	1
10	9458-020-003	Pipe, Gas Line	1
11	9039-915-001	Bracket, Gas Line Pipe	1
12	9857-134-002	Control Assy, Gas	1
13	9381-011-001	Manifold Assy., 4 port	1
*	9425-069-021	Orifice, Burner - Natural	4
*	9425-069-022	Orifice, Burner - LP	4
*	9732-102-010	Kit, LP Conversion	1
14	9576-203-002	Thermostat, Hi-Limit	1
15	9538-142-001	Spacer, Hi-Limit	2
16	9545-045-007	Screw 8B x 3/4"	2
17	9074-234-001	Cover, Hi-Limit Stat	1
18	9545-008-024	Screw 10B x 3/8"	1
19	9631-403-003	Wire Ass'y, High Voltage	1
20	9627-711-001	Harness, Low Voltage Ignition	1



Bearing Housing Group

Key	Part Number	Description	Qty
*	9803-189-001	Housing, Bearing Ass'y w one(rear) bearing	1
1	9241-183-003	Housing, Bearing	1
2	9036-159-001	Bearing, Ball-Rear	1
*	9036-159-002	Bearing, Ball-Front	1
3	8641-581-026	Washer, Flat 1/2"	4
4	8641-582-004	Lockwasher spring 1/2"	4
5	9545-017-004	Bolt, 1/2-13x1	4
6	9545-059-003	Screw, 7/16-14x1 1/2	2
*	8641-582-013	Lockwasher, 7/16	2
7	8640-416-001	Nut, 7/16-14.	4
*	9487-234-001	Ring, Tolerance	1

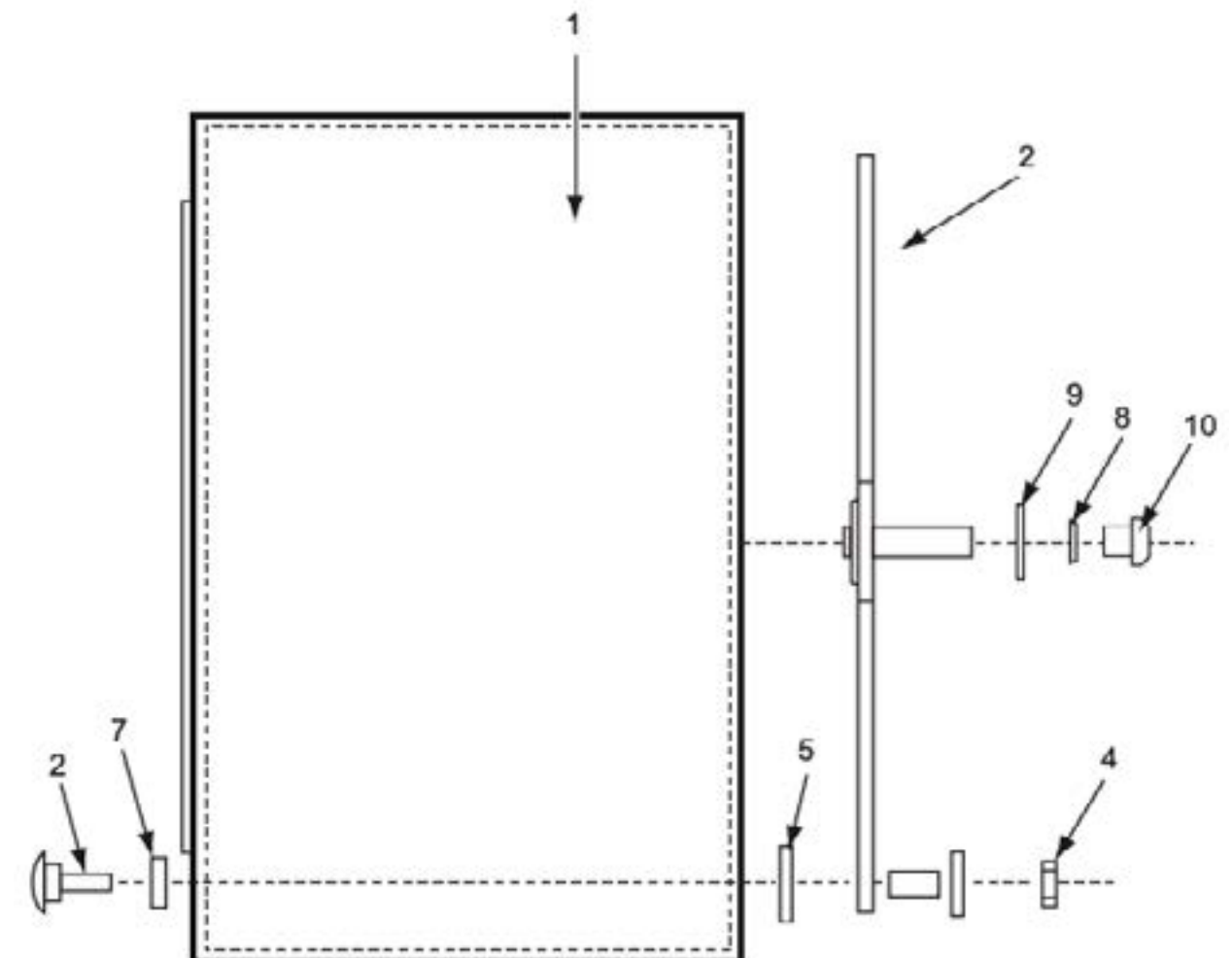
* Not Illustrated



Tumbler Basket Group

Key	Part Number	Description	Qty
1	9848-118-001	Tumbler Ass'y	1
*	9848-118-002	Tumbler Ass'y SS.....	1
2	9873-005-001	Spider Ass'y with bearing on.....	1
3	9497-226-001	Rod, Tumbler	4
4	8640-417-005	Nut 1/2"-13.....	4
5	9552-013-000	Shim.....	4
7	8641-590-001	Washer, Tumbler Rod Special	4
*	9487-234-001	Ring, Tolerance.....	1
8	8641-582-016	Lock Washer ext tooth 1/2", Tumbler Shaft	1
9	8641-581-026	Flat Washer 1/2",Tumbler Shaft.....	1
10	9545-017-009	Screw, Tumbler Shaft 1/2-13 x 11/4"	1

* Not Illustrated

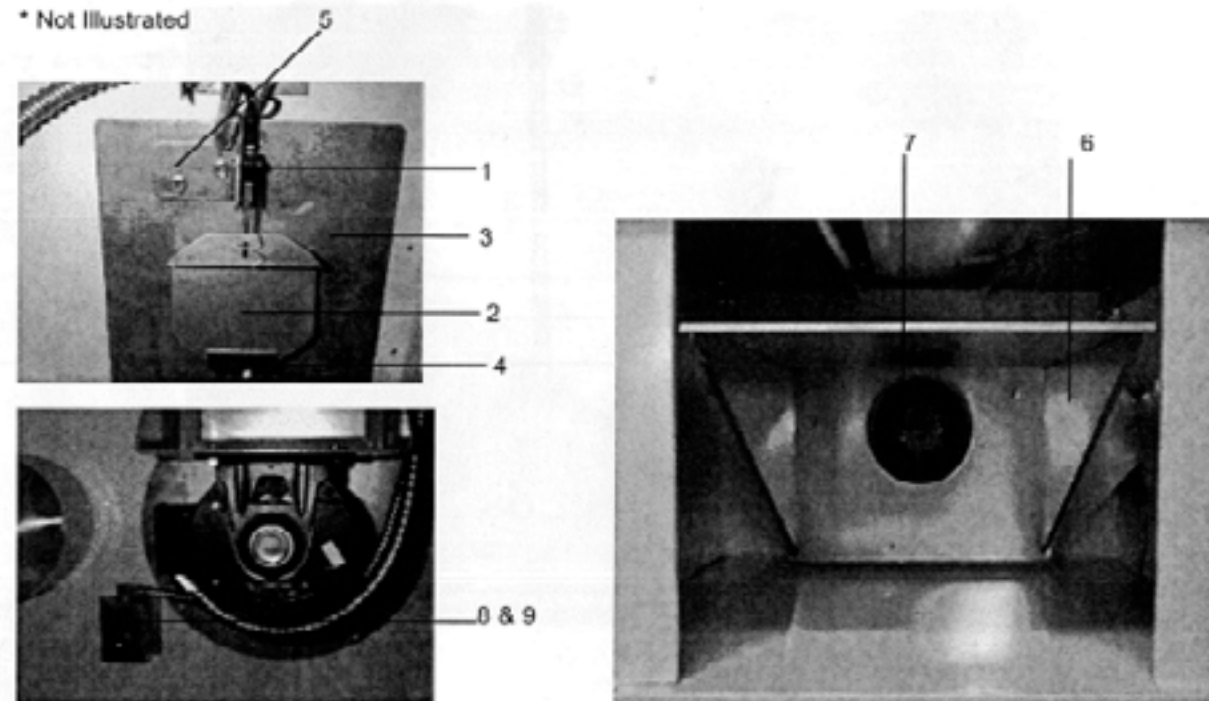


Blower Impeller and Air Flow Switch Group Over Temperature Switch

Key	Part Number	Description	Quantity
1	9539-461-009	Switch, Air Flow	1
*	9545-020-001	Screw, Hx #4-40 x 5/8	2
*	8640-401-001	Nut, Special Twin #4-40	1
2	9008-007-001	Actuator-Switch, Air Flow	1
*	9451-169-002	Pin, Cotter	1
3	9074-283-001	Plate, Cover	1
4	9029-046-001	Actuator Stop	1
5	9029-100-001	Bracket, Switch	1
*	9545-008-001	Screw 108 x 1/4	4
*	9039-575-000	Bracket, Conduit	1
6	9834-009-001	Hood Ass'y, Lint	1
*	8640-412-004	Nut, Whizlock	6
*	9822-031-002	Lint Screen 34" length	1
7	9278-037-003	Impeller, w/set screws	1
*	9074-27S.002	Cover-Half, Blower Impeller {Flat}	1
*	9074-27S.003	Cover-Half, Blower Impeller {Formed}	1
*	9545-008-001	Screw, Hex #10Bx1/4	4
8	9576-207-006	Thermostat, Safety	1
9	9825-057-002	Cover, Safety Thermostat	1
*	9545-008-001	Screw 108 x 1/4	2
*	9345-981-001	Schematic Wiring	1
*	9345-982-001	Diagram Wiring	1

* Not Illustrated

* Not Illustrated



Section 7: Maintenance