

## Section 6

### Parts Data

#### Accessories & Conversions

Part Number	Description
5130-019-002	Oil, 1/2 gallon
9472-001-001	Touch up Paint, 16 oz. Aerosol Can - white
9472-001-008	Touch up Paint, 16 oz. Aerosol Can - almond
9990-027-011	Hose, Water Supply
8641-242-000	Washer, Inlet Hose
9565-003-001	Strainer, Inlet Hose
9054-047-002	Spacer, Unit Mounting
8527-109-001	Decal-DOUBLE LOAD
8545-051-003	Drive Bit, Torx T-10
9732-055-002	Kit, Manual Start

#### Conversions

##### Cold Water Only in Soak and Rinse

Remove R-Gn wire from terminal number 3 on the temperature selector switch. Tape off the terminal on the end of the wire to prevent shorting.

##### Long Cycle - includes soak

(see Service Procedures - Short or Long Cycle Options)

##### Short Cycle - soak eliminated

(see Service Procedures - Short or Long Cycle Options)

## Section 6

### Parts Data

#### Kits & Assemblies

Part Number	Description
9732-092-001	WCA20 coin box guard
9732-055-002	Manual Start Kit
9732-040-001	Lower Serv Door Bracket and Fastener Kit
9732-038-001	Stator And Coil Kit Depend-O-Drain 120V
9732-030-001	High Speed Solenoid Ass'y New Style
9702-133-000	Pump Cover Kit
9702-119-000	Seal Kit
9702-112-000	Tub Back Seal Kit
9702-092-002	Tub Back Bearing and Seal Kit Complete

## Cabinet and Front Panel Group

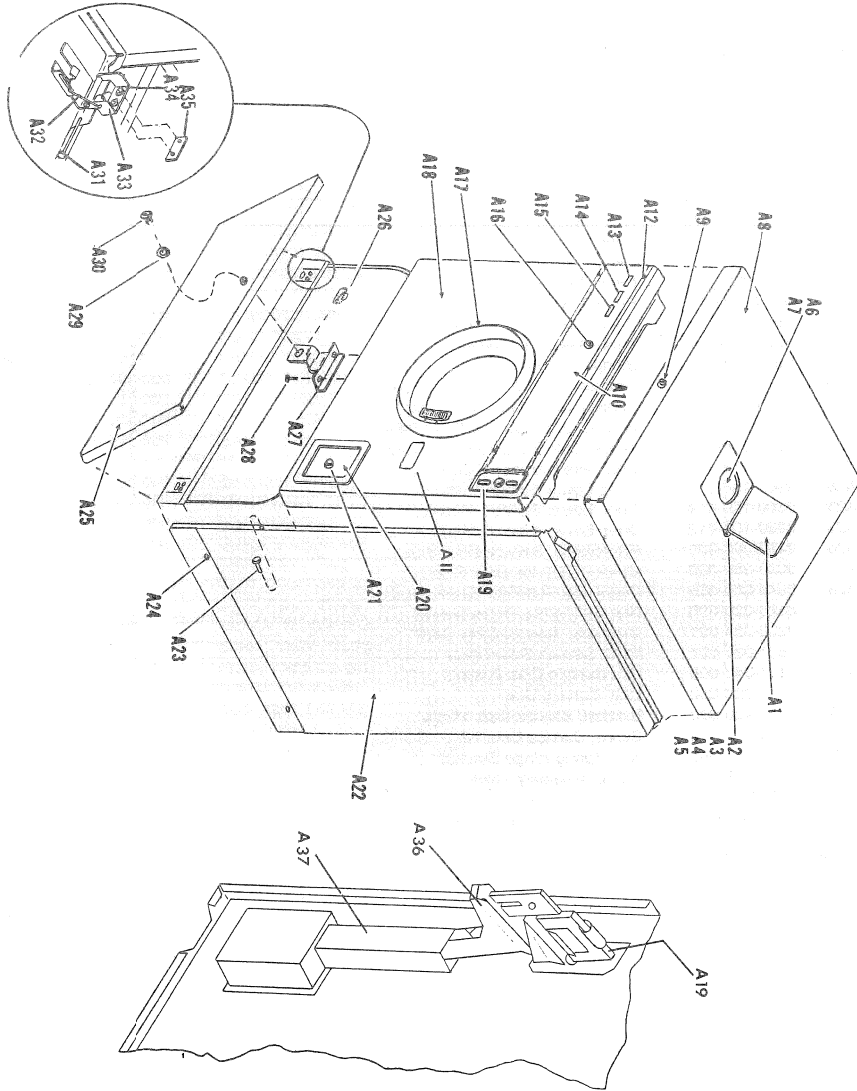
Key	Part Number	Description	
A1	9960-250-002	Door Assy, Soap - Black (includes the following)	1
*	9108-086-002	Door, Soap	1
*	9243-059-001	Hinge, Soap Door	1
*	9545-011-001	Screw, Drive	2
A2	9545-010-006	Screw, Soap Door Mtg	2
A3	8641-549-003	Washer, Soap Door	2
A4	8641-436-002	Washer, Fiber	2
A5	8640-412-003	Nut, Soap Door Mtg	2
A6	9118-035-002	Diaphragm, Soap Door	1
A7	9082-025-001	Cup, soap Door Diaphragm	1
A8	9989-121-009	Panel, Top - Almond	1
A8	9989-121-008	Panel, Top - Harvest Gold	1
A8	9989-121-007	Panel, Top - White	1
*	9206-10C-000	Gasket, Top Panel	2
A9	8650-019-001	Lock and Key, Top Panel	1
*	6292-006-003	Key Only, (GR700) for Top Panel	1
*	9206-39C-001	Gasket, Lock	1
A10	9994-02C-003	Escutcheon Assy, includes Nameplate	1
A10	9412-067-002	Nameplate	1
A11	8502-59E-002	Label, Warning	1
A12	9545-031-005	Screw, Escutcheon	6
A13	3310-009-000	Light, Pilot - Red - 120V	1
A14	3310-01C-000	Light, Pilot - Amber - 120V	1
A15	3310-011-000	Light, Pilot - White - 120V	1
A16	9539-449-001	Switch, Temperature Control	1
A16	9545-044-003	Screw, Temp. Switch	1
A16	9307-09C-002	Knob, Temp Control	1
A16	9545-028-006	Screw, Set- Knob	1
A17	9960-185-010	Door Assy, Loading	1
A18	9989-423-024	Panel Assy, Front- Almond	1
A18	9989-423-025	Panel Assy, Front- Harvest Gold	1
A18	9989-423-023	Panel Assy, Front- White	1
*	8502-617-001	Label, Made in USA	1
A19	9021-001-010	Acceptor, Coin	1
*	9545-020-002	Screw, Coin Acceptor mtg.	4
*	8640-424-002	Nut, Coin Acceptor mtg.	4
*	9003-170-001	Angle, Top Panel Hold Down	1
*	8640-359-002	Nut, Top Panel Lock Receiver	1
*	9545-008-005	Screw	2

\* Not Illustrated

## Cabinet and Front Panel Group (continued)

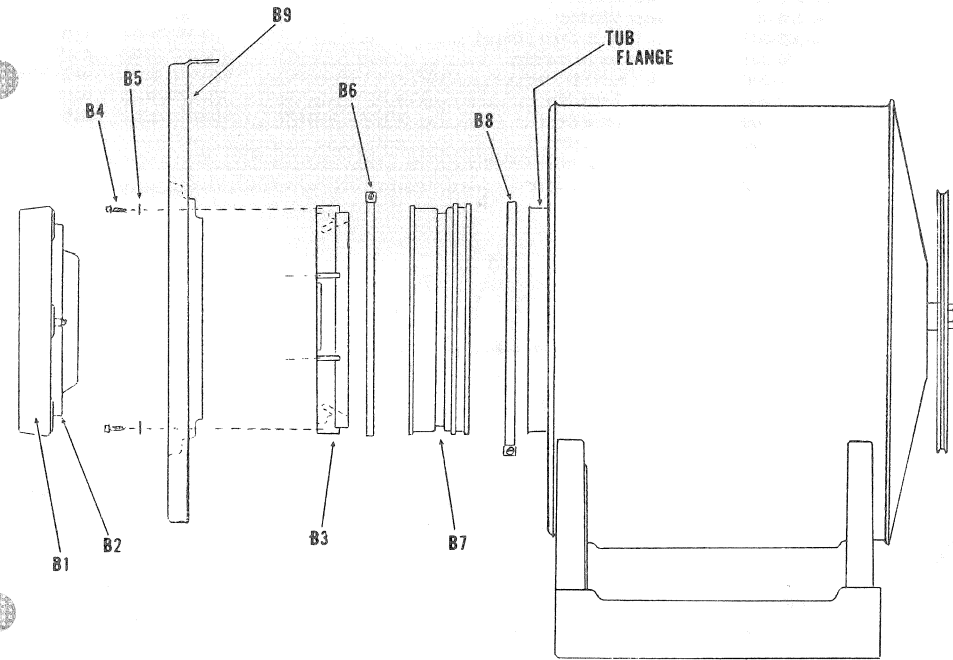
Key	Part Number	Description	
A20	9807-075-005	Box Assy, Coin- Almond	1
A20	9807-075-003	Box Assy, Coin- Harvest Gold	1
A20	9807-075-001	Box Assy, Coin- White	1
A21	8650-018-003	Lock and Key, Coin Box	1
*	9208-045-001	Guard, Coin Box	1
*	9545-018-015	Bolt, mtg.	7
*	8641-581-018	Washer, mtg	7
*	8640-414-004	Nut, mtg	7
A22	9989-335-020	Panel Assy, R.H.- Almond	1
A22	9989-335-022	Panel Assy, R.H.- Harvest Gold	1
A22	9989-335-021	Panel Assy, R.H.- White	1
*	9989-335-023	Panel Assy, L.H.- Almond	1
*	9989-335-025	Panel Assy, L.H.- Harvest Gold	1
*	9989-335-024	Panel Assy, L.H.- White	1
A23	9051-021-000	Bumper, Lower Door	2
A24	8641-342-000	Washer, Spec, Side Panel to Base	4
A24	9545-008-005	Screws, Side Panel Attachment	8
*	9206-176-000	Gasket, Side Panel to Front Panel	6
*	9545-008-005	Screw, Side Panel to Front Panel	6
*	8023-118-000	Clip, Wire Harness-Side Panel	2
A25	9960-186-017	Door, Lower Service, Almond	1
A25	9960-186-014	Door, Lower Service, Harvest Gold	1
A25	9960-186-012	Door, Lower Service, White	1
A26	9492-008-001	Receptacle, Service Door Stud	1
A27	9039-985-002	Bracket, Service Door Stud	1
A28	9545-008-005	Screw, Service Door Bracket mtg.	2
*	8520-223-003	Nut, Spring (for above screw)	2
A29	9209-084-001	Grommet, Service Door Stud	2
A30	9531-031-001	Stud, Service Door Latch	1
A31	9451-042-000	Pin, Service Door Hinge	2
A32	9341-028-000	Link, Service Door	2
A33	9039-120-000	Bracket, Service Door Hinge	2
A34	9545-045-002	Screw, Service Door Hinge Bracket	4
A35	8520-123-000	Nut, Spring Hinge Bracket	2
A36	9940-012-001	Chute Assembly, Coin	1
A37	9574-235-003	Tube, Coin Vault	1
*	9545-008-006	Screw (for A36 and A37)	1

\* Not Illustrated



### Front Door Sealing Group

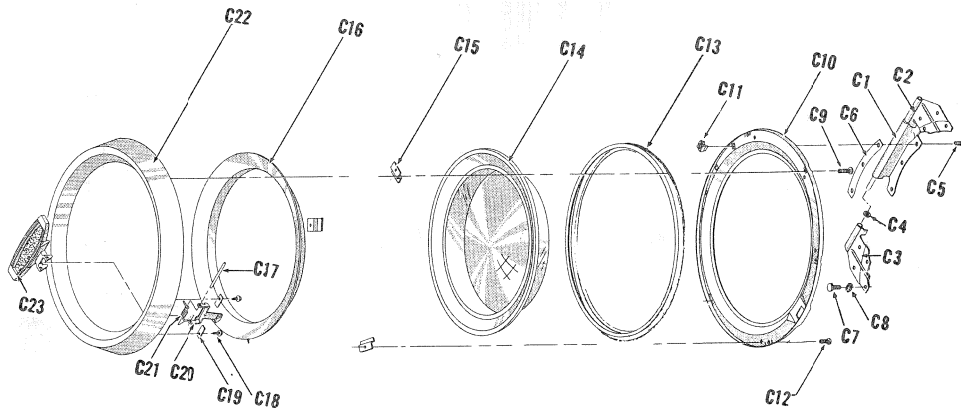
Key	Part Number	Description	
B1	9960-185-010	Door Assembly .....	1
B2	9206-418-001	Gasket, Door Sealing .....	1
B3	9487-219-001	Ring, Sealing .....	1
B4	9545-015-001	Screw, Ring to Panel .....	6
B5	8641-436-001	Washer, Fiber .....	6
B6	8654-117-012	Clamp, Ring to Collar .....	1
B7	9076-050-001	Collar .....	1
B8	9079-098-000	Clamp, Collar to Tub .....	1
B9	9989-423-023	Panel Assembly, Front-White .....	1
B9	9989-423-025	Panel Assembly, Front-Harvest Gold .....	1
B9	9989-423-024	Panel Assembly, Front-Almond .....	1



## Clothes Door Group

Key	Part Number	Description	
*	9955-017-002	Hinge Assy, Complete .....	1
C1	9845-004-001	Leaf and Pin Assy .....	1
C2	9039-738-001	Bracket, Hinge - Upper .....	1
C3	9039-737-001	Bracket, Hinge - Lower .....	1
C4	9538-033-000	Spacer, Hinge .....	1
C5	9545-006-002	Screw, Hinge to Door .....	1
C6	9552-031-001	Shim, Door Hinge .....	AR
C7	9545-006-003	Screw, Hinge to Front Panel .....	4
C8	8641-582-007	Lockwasher .....	4
*	8640-414-002	Nut .....	4
*	9455-007-000	Pad, Clothes Door Latch (On Frt. Panel) .....	1
*	9545-005-001	Screw, Latch Pad Mtg .....	2
C9	8639-823-000	Screw, Spec .....	6
*	9960-185-010	Door Assy., Clothes - Complete .....	1
C10	9454-263-009	Panel, Clothes Door .....	1
C11	8640-172-000	Nut, Spring .....	3
C12	8639-827-000	Screw, Spec .....	3
C13	9206-402-001	Gasket, Door Sealing .....	1
C14	9635-015-001	Window .....	1
C15	9486-025-001	Retainer, Window .....	3
C16	9276-060-005	Insert, Clothes Door ( Black) .....	1
C17	9451-153-001	Pin, Clothes Door Latch .....	1
C18	8639-547-000	Screw, Latch Pin Retainer .....	2
C19	9486-027-000	Retainer, Latch Pin .....	2
C20	9349-017-000	Latch, Clothes Door .....	1
C21	9534-066-000	Spring, Door Latch .....	1
C22	9487-055-000	Ring, Clothes Door - Chrome .....	1
C23	9244-075-002	Handle, Clothes Door .....	1

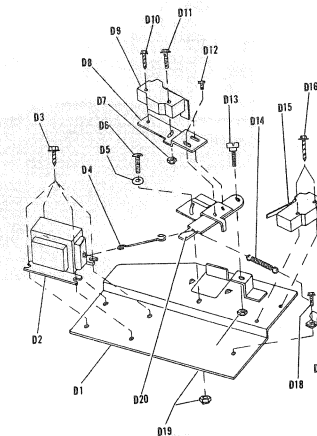
\* Not Illustrated



## Door Lock Mechanism

Key	Part Number	Description	
*	9885-019-003	Lock Assy, Door - Complete (120 volt-60hz) .....	1
D1	9982-276-002	Plate Assy, Latch Mech .....	1
D2	9536-078-003	Solenoid (120 volt-60hz) .....	1
D3	9545-008-001	Screw, Solenoid Mtg .....	4
*	8641-582-006	Lockwasher .....	4
D4	9341-042-001	Link, Sol. Latch .....	1
D5	8641-581-006	Washer .....	1
D6	9545-012-013	Screw, Latch Plate Mtg .....	1
D7	8640-413-004	Nut, Elastic Stop .....	1
D8	9039-601-000	Bracket, Switch .....	1
D9	9539-446-004	Switch, Latching .....	1
*	9550-164-001	Shield, Insulator .....	1
D10	9545-031-006	Screw, Switch Mtg .....	1
D11	9545-044-002	Screw, Switch Mtg .....	1
D12	9545-031-003	Screw, Switch Brkt .....	2
D13	9451-096-000	Pin, Latch Pivot .....	1
D14	9534-350-001	Spring, Sol. Return .....	1
D15	9539-446-005	Switch, Door Lock Sensing .....	1
*	9550-164-001	Shield, Insulator .....	1
D16	9545-031-006	Screw, Switch Mtg .....	2
D17	8654-125-001	Clamp, Plastic .....	1
D17	8654-125-002	Clamp, Plastic .....	2
D18	8639-547-000	Screw, Clamp to Plate .....	1
D19	8640-411-002	Nut, Elastic Stop .....	2
D20	9982-173-001	Bracket, Locking .....	1

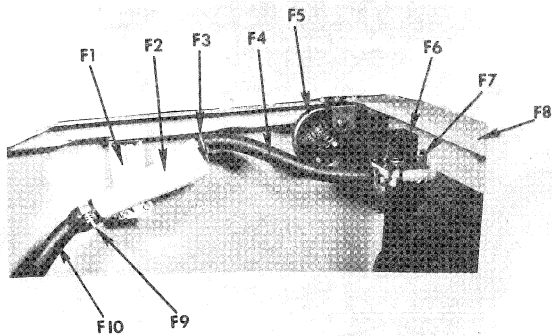
\* Not Illustrated



## Upper Rear Channel Components

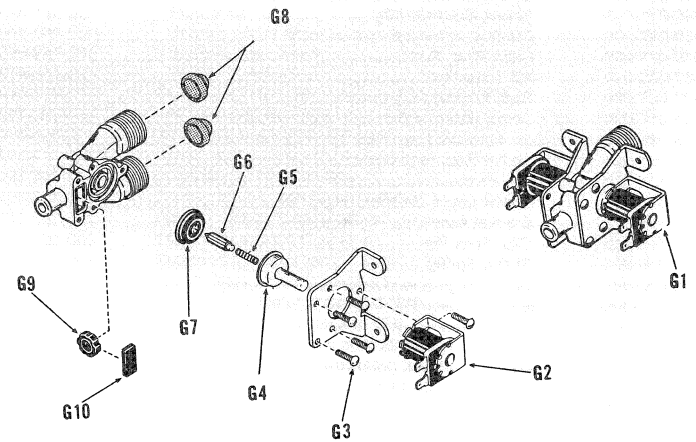
Key	Part Number	Description	
F1	9039-421-001	Bracket, Inlet Trough Mtg .....	1
F2	9575-026-001	Trough, Water Inlet .....	1
*	9413-030-001	Nozzle (For Item F1) .....	1
*	9545-031-005	Screw, Nozzle to Trough .....	2
*	9545-008-005	Screw, Trough and Bracket Mtg .....	4
F3	8654-093-000	Clamp, Hose .....	2
F4	9242-369-001	Hose, Water Valve to Trough .....	1
F5	9539-457-001	Switch, Pressure .....	1
*	9545-008-005	Screw, Pressure Switch to Side Panel .....	2
F6	9379-175-001	Valve, Water (120 volt-60hz) .....	1
F7	9545-008-008	Screw, Water Valve to Channel .....	2
*	8641-582-006	Lockwasher (For Item F7) .....	2
F8	9081-052-002	Channel, Upper Rear .....	1
*	9802-037-007	Cord, Service .....	1
*	8618-034-000	Strain Relief .....	1
*	8639-621-007	Screw, Terminal & Cord Eyelet .....	1
*	9039-996-002	Bracket, Timer Mounting .....	1
*	8652-130-037	Terminal, Ground Wire .....	1
*	9545-003-005	Screw, Rear Channel to Side Panel .....	4
F9	8654-112-000	Clamp, Inlet Hose .....	1
F10	9242-363-001	Hose, Trough to Tub .....	1
*	9132-001-001	Dipstick, Oil Checking .....	1
*	9242-427-002	Hose, Filler Tube .....	1
*	9206-175-000	Gasket, Spacer (Side Panels to Front) .....	6

\* Not Illustrated



## Water Inlet Valve Group

Key	Part Number	Description	
G1	9379-175-001	Valve, Water Inlet (120 volt-50/60hz) .....	1
G2	9089-017-000	Coil (120 volt) .....	2
G3	8639-827-000	Screw .....	10
G4	9211-021-002	Guide, Armature .....	2
G5	9534-298-001	Spring, Armature .....	2
G6	9015-008-001	Armature .....	2
G7	9118-049-001	Diaphragm .....	2
G8	9555-056-001	Screen .....	2
G9	9626-052-003	Washer, Flow .....	1
G10	9206-401-001	Gasket, Flow Washer Outlet .....	1



## Motor and Transmission Group

Key	Part Number	Description
*	9902-143-008	Transmission Assembly-120 volt-60hz (includes K1 thru K66) .... 1
K1	9914-107-010	Motor & End Bell (120 volt-60hz) ..... 1
K2	9879-032-001	End Bell Assembly ..... 1
K3	8688-003-000	Pin, Dowel ..... 2
K4	9036-042-000	Bearing, Jack Shaft ..... 1
K5	9053-012-000	Bushing, Motor Shaft ..... 1
K6	9532-016-000	Seal, Motor Shaft Oil ..... 1
K7	9456-046-001	Plug, Welsh ..... 1
K8	9206-073-000	Gasket, Welsh Plug ..... 1
K9	9985-064-001	Spin Solenoid Assembly, Intermediate (120 volt) ..... 1
K10	8641-262-000	Washer, Shifter Return Spring ..... 1
K11	9534-150-000	Spring, Shifter Return <i>9534-201-001 HS</i> ..... 1
K12	9451-166-008	Pin, Cotter (Link) ..... 2
K13	9341-023-000	Link ..... 1
K14	9001-022-000	Arm, Rocker ..... 1
K15	9451-166-006	Pin, Cotter (Arm to Brkt) ..... 1
K16	9083-107-001	Clip, Hairpin (Solenoid) ..... 2
K17	9536-007-000	Solenoid, Shifter (120 volt) ..... 2
K18	9545-031-005	Screw, Solenoid Mtg ..... 4
K19	9039-297-000	Bracket, Intermediate Assembly ..... 1
K20	8649-031-000	Snap Ring, Rod ..... 2
K21	9487-026-000	"O" Ring, Rod ..... 2
K22	9497-007-000	Rod, Intermediate Shifter ..... 1
*	9545-012-001	Screw (Intermediate Spin Assembly to Housing) ..... 2
K23	9985-155-001	Spin Solenoid Assembly, High Speed (120 volt) ..... 1
K24	9497-051-001	Shifter Rod, High Speed ..... 1
K25	9451-166-001	Pin, Pivot ..... 1
K26	9348-064-001	Shifter Lever, Solenoid Mtg ..... 1
K27	9985-156-001	Bracket Assembly, High Speed ..... 1
K28	8023-118-000	Clip, Pivot Pin ..... 1
*	9534-346-001	Shifter Spring ..... 1
*	9545-012-001	Screw, High Speed Assembly to Housing ..... 2
K29	9904-027-000	Gear Set Assembly, 3 speed ..... 1
K30	8641-270-000	Thrust Washer, Jack Shaft ..... 1
K31	9487-014-000	Snap Ring, Jack Shaft ..... 1
K32	9207-043-000	Gear, Jack Shaft (39 teeth) ..... 1
K33	9306-007-002	Key, Woodruff ..... 4
K34	8641-228-000	"C" Washer, Jack Shaft ..... 6
K35	9904-005-000	Gear Assembly, Jack Shaft ..... 1
K36	9534-080-000	Drive Spring, Left Hand Jack Shaft ..... 1

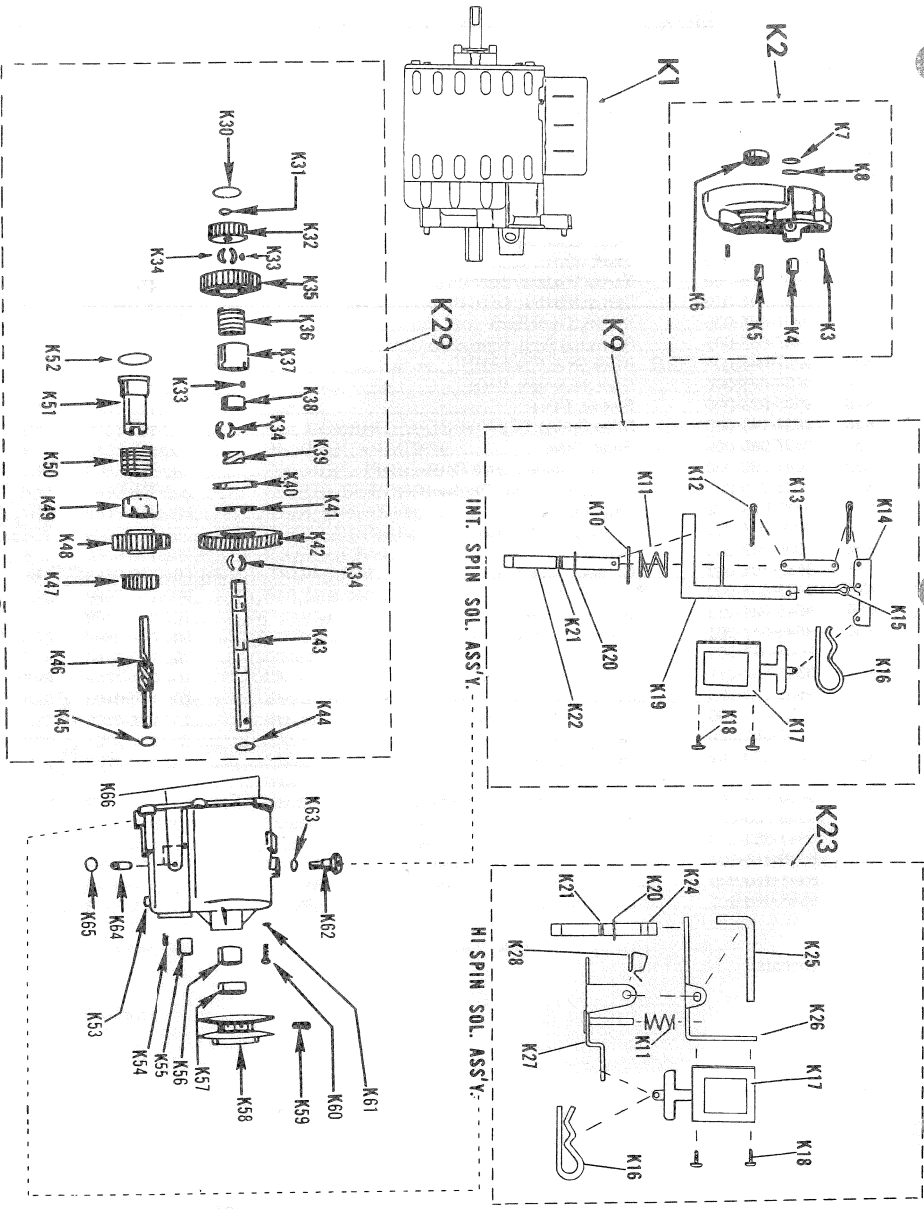
\* Not Illustrated

## Motor and Transmission Group (continued)

Key	Part Number	Description
K37	9535-018-000	Sleeve, Drive ..... 1
K38	9053-018-000	Bushing, Jack Shaft ..... 1
K39	8639-423-002	Screw, Clutch Thread ..... 1
K40	9583-001-000	Thread, Clutch ..... 1
K41	9534-079-000	Spring, Clutch Drag ..... 1
K42	9980-002-000	Gear Assembly ..... 1
K43	9537-041-000	Shaft, Jack ..... 1
K44	8641-224-000	Thrust Washer, Jack Shaft ..... 1
K45	8641-231-000	Thrust Washer, Drive Pinion ..... 1
K46	9207-044-000	Pinion, Drive Shaft ..... 1
*	9487-083-000	Retaining Ring, Drive Gears ..... 1
K47	9207-041-000	Drive Gear, (29 teeth) ..... 1
K48	9904-025-000	Gear Assembly, Drive ..... 1
K49	9535-029-000	Sleeve, Drive ..... 1
K50	9534-149-000	Drive Spring, Right Hand Drive Shaft ..... 1
K51	9537-066-000	Shaft, Drive ..... 1
K52	8641-269-000	Thrust Washer, Drive Shaft ..... 1
K53	9803-009-001	Housing Assembly, Transmission ..... 1
K54	8615-104-032	Plug, Pipe ..... 1
K55	9036-043-000	Bearing, Drive Shaft ..... 1
K56	9036-042-000	Bearing, Jack Shaft ..... 1
K57	9532-106-003	Oil Seal, Jack Shaft ..... 1
K58	9453-033-000	Pulley, Drive (60hz) ..... 1
K59	9545-028-013	Set Screw, Drive Pulley ..... 2
K60	9545-047-001	Screw, Housing Mtg (3/4" long) ..... 5
K60	9545-047-002	Screw, housing Mtg (7/8" Long) ..... 1
K61	8641-582-011	Lockwasher, Housing Mtg ..... 6
K62	9535-019-000	Sleeve, Shifter Rod (Intermediate) ..... 1
K63	9206-097-000	Gasket, Shifter Rod Sleeve ..... 1
K64	9458-002-000	Pipe, Vent and Oil Checking ..... 2
K65	8651-023-002	Button Plug, Vent Pipe ..... 1
*	9039-696-000	Bracket, Rear Motor Support ..... 1
*	9039-988-001	Bracket, Front Motor Support (60hz) ..... 1
*	9895-008-001	Stud Assembly, Transmission Mtg ..... 2
*	8641-582-013	Lockwasher (for Stud Assembly above) ..... 4
*	8640-416-001	Nut (for Stud Assembly above) ..... 4
*	8641-340-000	Spacer Washer, Transmission Mtg ..... 1
*	9545-006-001	Screw, Motor Mtg ..... 3

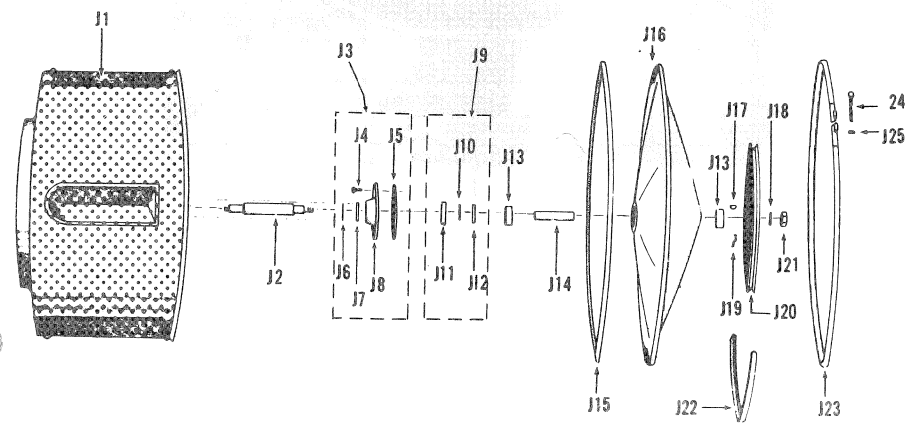
\* Not Illustrated

### Cylinder, Tub Back and Pulley Group



Key	Part Number	Description	
J1	9850-002-005	Cylinder Assembly	1
J2	9537-038-000	Shaft, Cylinder	1
J3	9702-119-000	Seal Kit (includes J4, J5, J6, J7 & J8)	1
J4	9545-008-018	Screw, Seal Housing	6
J5	9206-071-000	Gasket, Seal Housing	1
J6	9206-072-000	Gasket, Seal Mating Ring	1
J8	9276-056-000	Seal, Main	1
J8	9702-119-000	Housing, Seal	1
J9	9702-112-000	Seal Kit, Tub Back (includes J10, J11 & J12)	1
J10	9206-294-000	Gasket, Cylinder Shaft (copper)	1
J11	9535-085-000	Seal, Tub Back	1
J12	9538-108-000	Spacer, Cylinder Shaft	1
J13	9037-012-000	Bearing, Ball (Tub Back)	2
J14	9538-106-000	Spacer, Bearing	1
J15	9206-229-002	Gasket, Tub Back	1
J16	9982-196-007	Tub Back Assembly (includes J19 & Mtg Screws)	1
J17	9306-006-000	Key, Cylinder Shaft	1
J18	8641-240-000	Lockwasher, Pulley Mtg	1
J19	9079-022-000	Clamp, Bearing Retainer	2
*	9545-008-018	Screw, Clamp Mtg	2
J20	9908-040-002	Pulley, Cylinder	1
J21	8640-167-001	Nut, Pulley Mtg	1
J22	9040-032-000	Belt, Drive (60hz)	1
J22	9040-038-001	Belt, Drive (50hz)	1
J23	9859-003-002	Clamp, Tub Back	1
J24	9545-014-001	Screw, Clamp Ring	1
J25	8640-400-001	Nut, Clamp Ring	1
*	9702-092-001	Tub Back Bearing & Seal Kit (includes J3, J13, J15 & J17)	1
*	9702-092-002	Tub Back Bearing & Seal Kit (includes J3, J9, J13, J15 & J17)	1

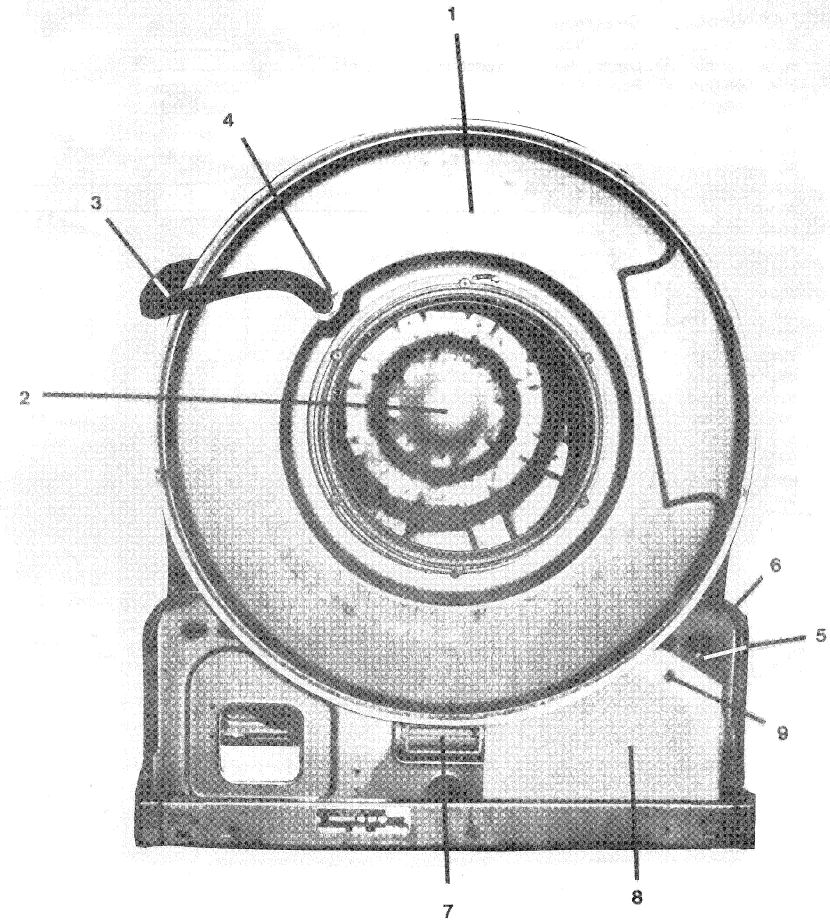
\* Not Illustrated



## Tub, Cradle and Drain Housing Group Front View

Key	Part Number	Description	
1	9869-001-010	Tub & Cradle Assembly .....	1
2	9850-002-005	Cylinder Assembly .....	1
3	9242-368-001	Hose, Trough to Tub .....	1
*	8654-112-000	Clamp, Hose (Trough End) .....	1
4	8654-093-000	Clamp, Hose (Tub End) .....	1
*	9118-035-002	Diaphragm, Soap Door .....	1
5	5198-211-001	Circuit Breaker (120 volt) .....	1
*	8641-582-014	Lockwasher .....	1
6	9902-143-008	Transmission (120 volt-60hz) .....	1
*	9460-004-000	Pan, Base .....	1
*	9545-008-005	Screw, Base Pan Mtg .....	4
7	9241-159-002	Housing, Drain .....	1
7	9206-086-000	Gasket, Drain Housing .....	1
7	8639-424-000	Screw, Drain Housing Mtg .....	8
7	8641-222-000	Washer, Rubber (Drain Housing Mtg) .....	8
7	8640-413-001	Nut, Drain Housing Mtg .....	8
7	8641-581-005	Washer, Flat .....	7
*	9242-425-001	Hose, Housing to Dump Valve .....	1
*	8654-117-008	Clamp, Hose to Dump Valve .....	1
*	8654-117-011	Clamp, Hose to Drain Housing .....	1
8	9550-127-003	Shield, Motor Shaft .....	1
9	8651-053-001	Plug, Button .....	1

\* Not Illustrated

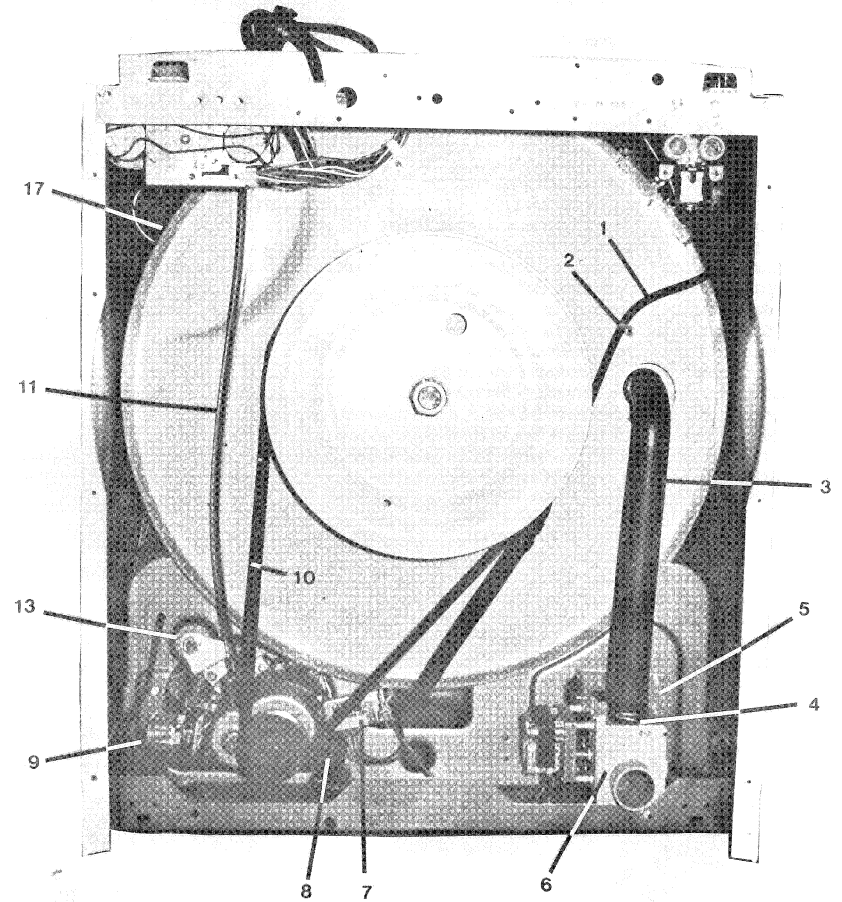




## Tub, Cradle and Drain Group Rear View

Key	Part Number	Description	
1	9242-175-000	Hose, Pressure Switch .....	1
2	8654-125-002	Clamp, Pressure Switch Hose Retaining .....	1
2	9545-008-005	Screw, Clamp .....	1
*	8654-117-015	Clamp, Pressure Switch Hose to Tub .....	1
3	9242-425-001	Hose, Overflow .....	1
4	8654-034-000	Overflow Hose to Drain Valve .....	1
5	9029-030-001	Bracket, Dump Valve Mtg. ....	1
*	9545-045-002	Screw, Valve to Bracket .....	1
*	9545-012-005	Screw, Valve and Bracket Mtg .....	2
*	8640-413-001	Nut, Valve and Bracket Mtg .....	2
*	8641-582-006	Lockwasher, Valve and Bracket Mtg .....	2
*	9242-425-001	Hose, Tub to Drain Valve .....	1
*	8654-117-011	Clamp, Tub End of Hose .....	1
*	8654-117-008	Clamp, Drain Valve End of Hose .....	1
6	9379-177-003	Valve, Drain (120 volt-60hz) .....	1
7	9985-064-001	Solenoid Assembly, Intermediate Spin (120 volt-60hz) .....	1
8	9534-151-000	Spring, Belt Tension .....	1
9	9985-155-001	Solenoid Assembly, High Speed Spin (120 volt-60hz) .....	1
10	9040-032-000	Belt, Drive .....	1
11	9132-001-001	Dipstick, Oil Checking .....	1
11	9242-427-002	Hose, Filler Tube .....	1
13	9895-008-001	Stud, Transmission Mtg .....	2
17	9456-042-001	Plug, Cap .....	1

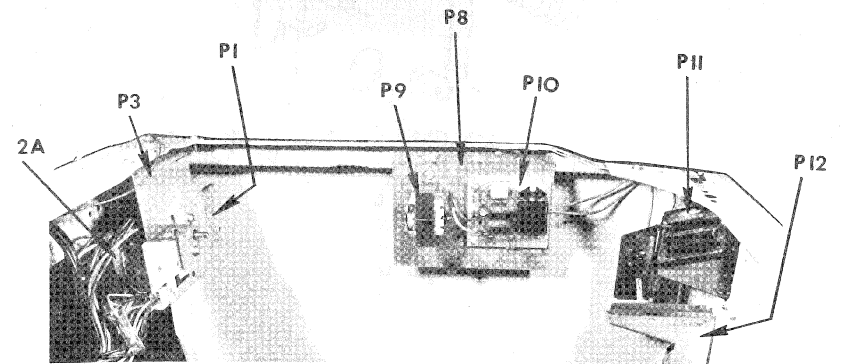
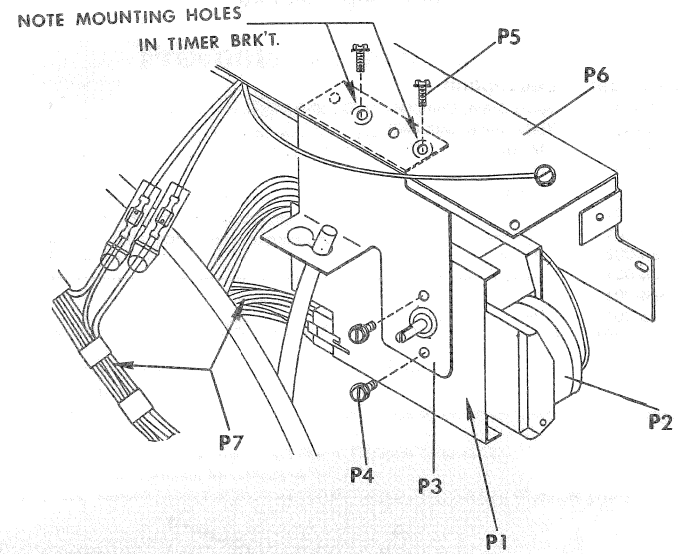
\* Not Illustrated



## Timer Group

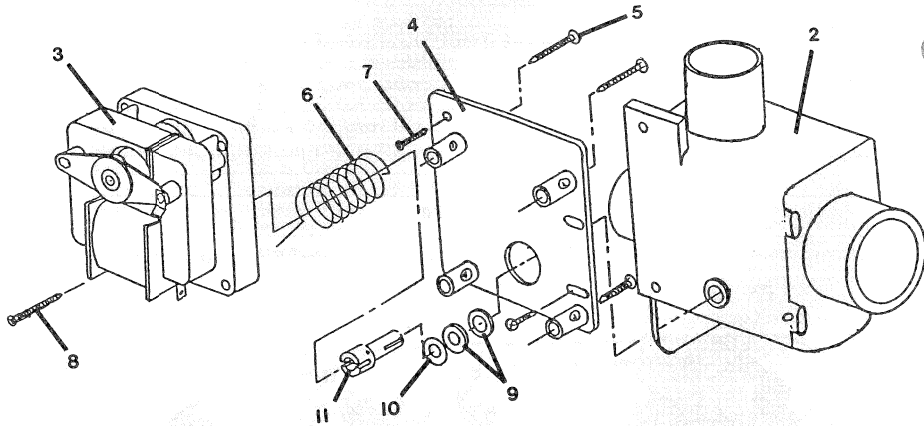
Key	Part Number	Description	
P1	9571-351-001	Timer (120 volt-60hz)	1
P2	9376-286-002	Timer Motor, Rapid Advance (120 volt-60hz)	1
P2A	9376-285-002	Timer Motor, Drive (120 volt-60hz)	1
*	9207-096-001	Gear, Idler (33 tooth)	1
P3	9039-996-002	Bracket, Timer Mtg	1
P4	9545-012-001	Screw, Timer to Bracket	2
P5	9545-008-005	Screw, Timer Bracket to Channel	2
P6	9081-052-001	Channel, Back Support	1
P7	9627-641-001	Harness, Main Wiring	1
*	9627-668-001	Harness, Door Lock	1
*	8683-027-010	Connector, Timer Harness (black)	1
*	8683-027-009	Connector, Timer Harness (white)	1
*	8683-027-007	Connector, Door Lock Harness (female)	1
*	8683-027-008	Connector, Door Lock Harness (male)	1
*	8652-124-031	Terminal, Door Lock Connector (female)	1
*	8652-124-029	Terminal, Door Lock Connector (male)	1
P8	9857-119-001	Accumulator, Complete (120 volt-60hz)	1
P9	8711-003-001	Transformer (120 volt-60hz)	1
P10	9020-002-001	Accumulator Board Only	1
*	9545-015-002	Screw, Board Mtg	4
*	9209-085-001	Grommet-Nut, Board Mtg	4
*	9545-008-005	Screw, Complete Accumulator to Side Panel	2
P11	9021-001-010	Coin Acceptor, Complete	1
*	9732-126-001	Switch, Coin Counting	1
*	9063-004-001	Bail, Coin Return Loop	1
*	9545-020-002	Screw, Coin Meter Mtg	4
*	8640-424-002	Nut, Coin Meter Mtg	4
P12	9940-012-001	Chute, Coin	1
*	9732-055-002	Conversion Kit, Coin to Manual	1
*	9539-464-001	Switch, Start	1
*	9539-465-001	Switch, Acceleration	1
*	8502-604-001	Decal, Instruction	1
*	8545-051-003	Tool, Torx T-10 Driver	1

\* Not Illustrated



## Drain Valve Group

Key	Part Number	Description
1	9379-177-003	Valve Drain, Complete (120 volt-60hz)..... 1
2	9064-063-001	Body, Valve (with ball) ..... 1
3	9914-137-004	Motor and Gear Train (120 volt-60hz) ..... 1
4	9452-533-001	Plate, Motor Mtg ..... 1
5	8639-994-001	Screw ..... 3
6	9534-343-001	Spring, Drive ..... 1
7	9545-054-001	Screw ..... 2
8	9545-054-002	Screw ..... 1
9	9532-134-001	Seal, V Packer ..... 2
10	8641-584-001	Washer ..... 1
11	9451-185-001	Pin, Main Drive ..... 1



## Section 7 Preventative Maintenance

### Daily

1. Clean the top and the cabinet to remove residue.
2. Clean the soap dispenser and soap lid.
3. Check the drain for leaking and proper draining.
4. Check the loading door for leaks.
5. Clean the door seal of all foreign material.
6. Leave the loading door open to aerate the washer when not in use.

### Quarterly

**Make sure the power is disconnected before making the following checks.**

1. Check the drive belt for wear and proper tension.
2. Clean lint and other foreign material from around drive motor.
3. Check all water connections for leaks.
4. Wipe and clean the inside of the washer and check all electrical components for moisture and dust.
5. Remove and clean water inlet hose filters. Replace if necessary.
6. Check the transmission for correct oil level.
7. After any service always replace all panels before reconnecting electrical power.